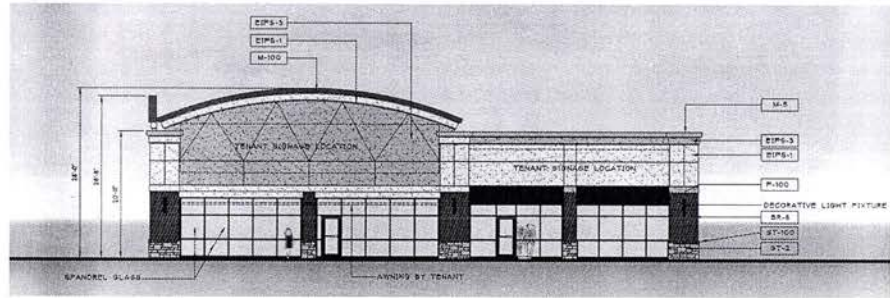


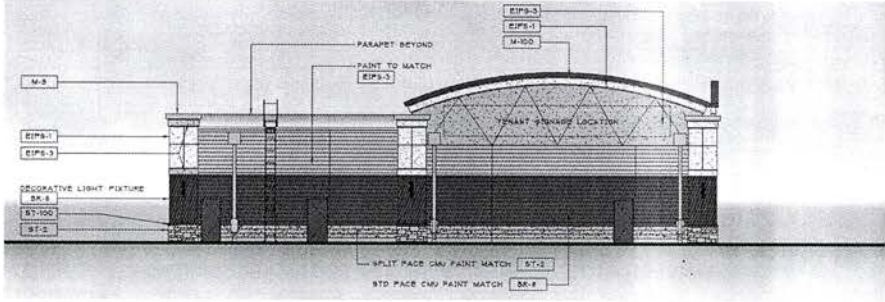
NOTE	MATERIAL	MANUFACTURER	MODE / COLOR	CONTACT
BR-4	BRICK VENEER	ENDICOTT	COLOR: MEDIUM IRON SPOT TEXTURE: SMOOTH-UTILITY SIZE	Watts Brick Inc. - Gray Building 351 417 0200
ST-1	STONE	BOULDER CREEK	COLOR: NAVAJO TEXTURE: FRASKE BLUFF DAYSTALL	Watts Brick Inc. - Gray Building 351 417 0200
ST-100	PARDEBY SILL	BOULDER CREEK	COLOR: PONDERSHA	Lutz Company 763 315 8888
EIPB-1	EXTERIOR INSULATION FINISH SYSTEM	DRYVIT	COLOR: 105 AMARILLO WHITE - TEXTURE: SANDSLAST LIGHT	Lutz Company 763 315 8888
EIPB-3	EXTERIOR INSULATION FINISH SYSTEM	DRYVIT	COLOR: 328 COPPER MILK - TEXTURE: SANDSLAST LIGHT	Lutz Company 763 315 8888
M-5	METAL COPING	URA-GLAD	COLOR: SIKKA YAN	Lutz Company 763 315 8888
M-100	METAL COPING	JNA-GLAD	COLOR: ELECTRIC BLUE	Lutz Company 763 315 8888
M-100	PARAPET AWNING	SUNBELLA	COLOR: BLACK	SUNBELLA 338 221 238
MSYAK COLOR AT BR-4		PLANNING BRIMING	M-30 - COMPLIMENT BRICK COLOR	
GLASS COLOR	CLEAR			
STOREFRONT	DARK BRONZE			



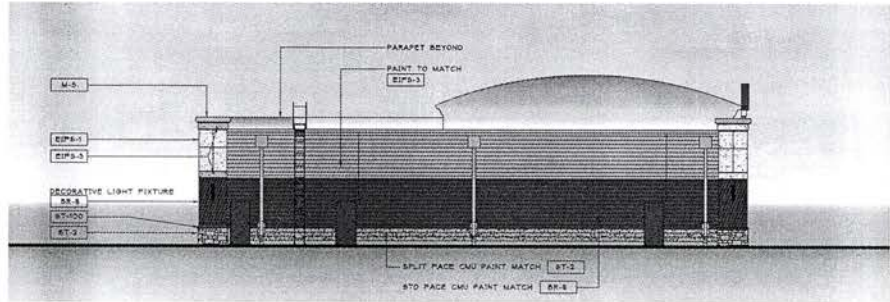
**PRELIMINARY SOUTH ELEVATION**  
SCALE: 1/8" = 1'-0"

**K|B|A**  
K&B INCORPORATED  
P (513) 752-7800  
F (513) 752-7833  
4517 Ingersoll Drive  
Overland Park, MO 66211  
www.kba.com  
K&B is an Equal Opportunity Employer  
**SHEET CONTENTS:**  
PRELIMINARY ELEVATIONS  
PRELIMINARY FLOOR PLAN

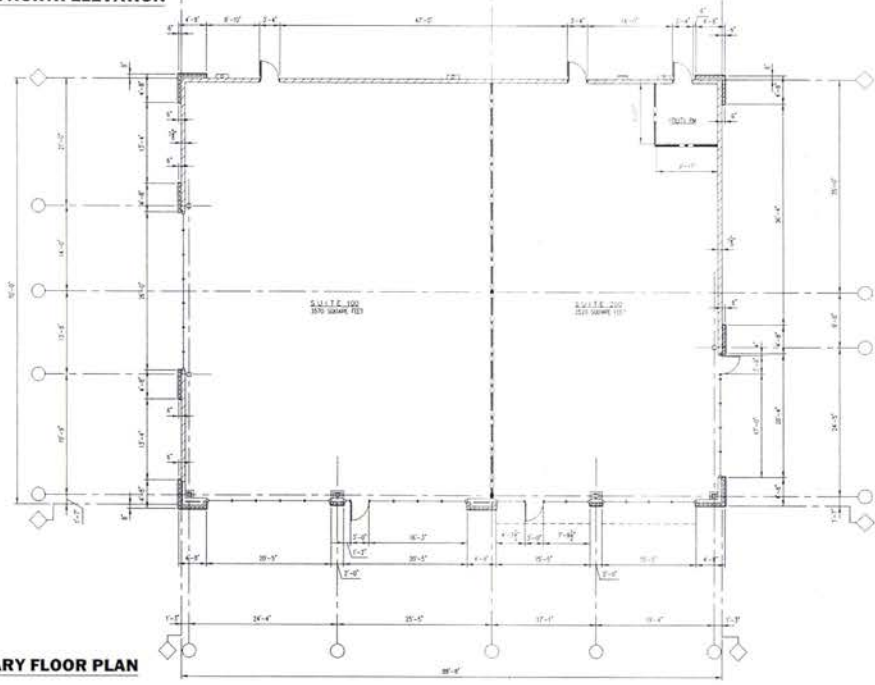
Midland Atlantic



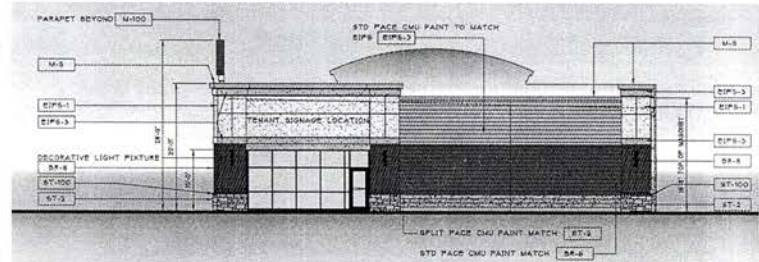
**ALTERNATE NORTH ELEVATION**  
SCALE: 1/8" = 1'-0"



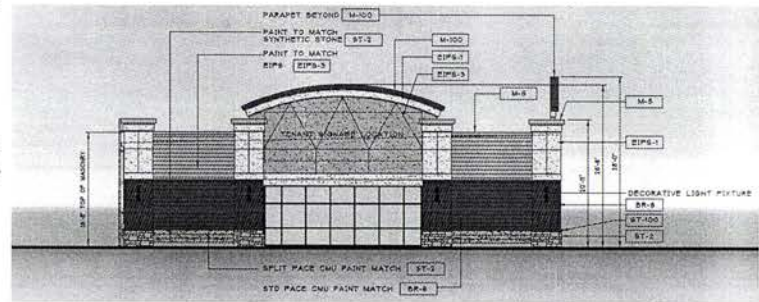
**PRELIMINARY NORTH ELEVATION**  
SCALE: 1/8" = 1'-0"



**PRELIMINARY FLOOR PLAN**  
SCALE: 1/8" = 1'-0"



**PRELIMINARY EAST ELEVATION**  
SCALE: 1/8" = 1'-0"



**PRELIMINARY WEST ELEVATION**  
SCALE: 1/8" = 1'-0"

Proposed Outlot Building at:  
**RUSMORE CROSSING**  
OUT PARCEL 9  
1147 Eglin Street  
Rapid City, SD 57701

REV DATE CKD

Drawn By: Checked (M)

Preliminary  
Not for  
Construction

Date: 02/18/15 Job No.

**A1**

02.18.15 PRELIMINARY PLOT