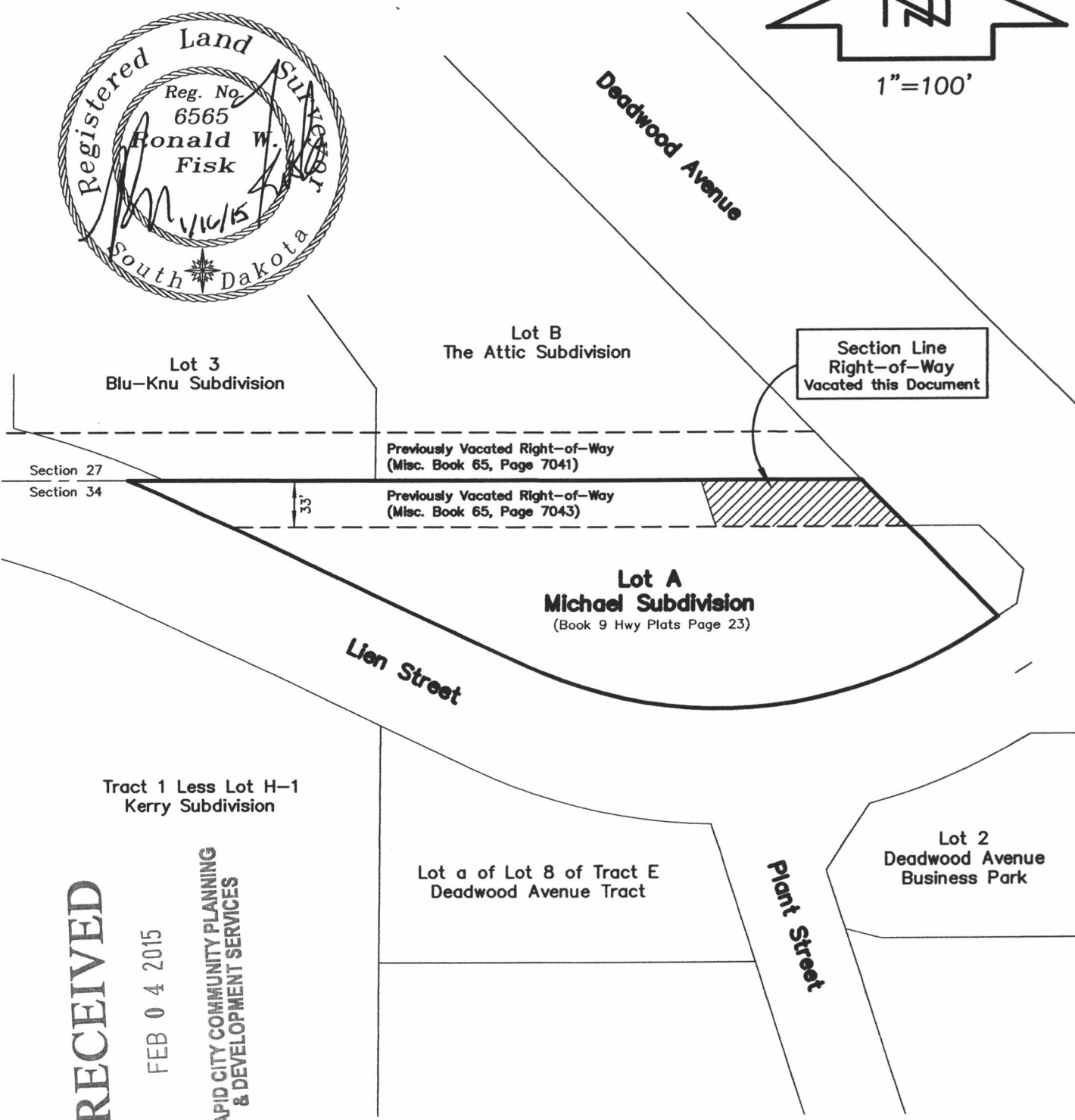
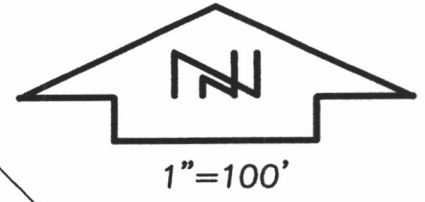


EXHIBIT A

VACATION OF SECTION LINE RIGHT-OF-WAY

LOCATED IN LOT A, MICHAEL SUBDIVISION, IN THE N1/2 OF THE NW1/4 OF SECTION 34, T2N, R7E, BHM, RAPID CITY, PENNINGTON COUNTY, SOUTH DAKOTA



RECEIVED

FEB 04 2015

RAPID CITY COMMUNITY PLANNING
& DEVELOPMENT SERVICES

PREPARED BY:
FISK LAND SURVEYING & CONSULTING ENGINEERS, INC.
P.O. BOX 8154, RAPID CITY, SD 57709 (605) 348-1538 December 2, 2014

NO. 14-12-02