

RECEIVED

FEB 06 2015

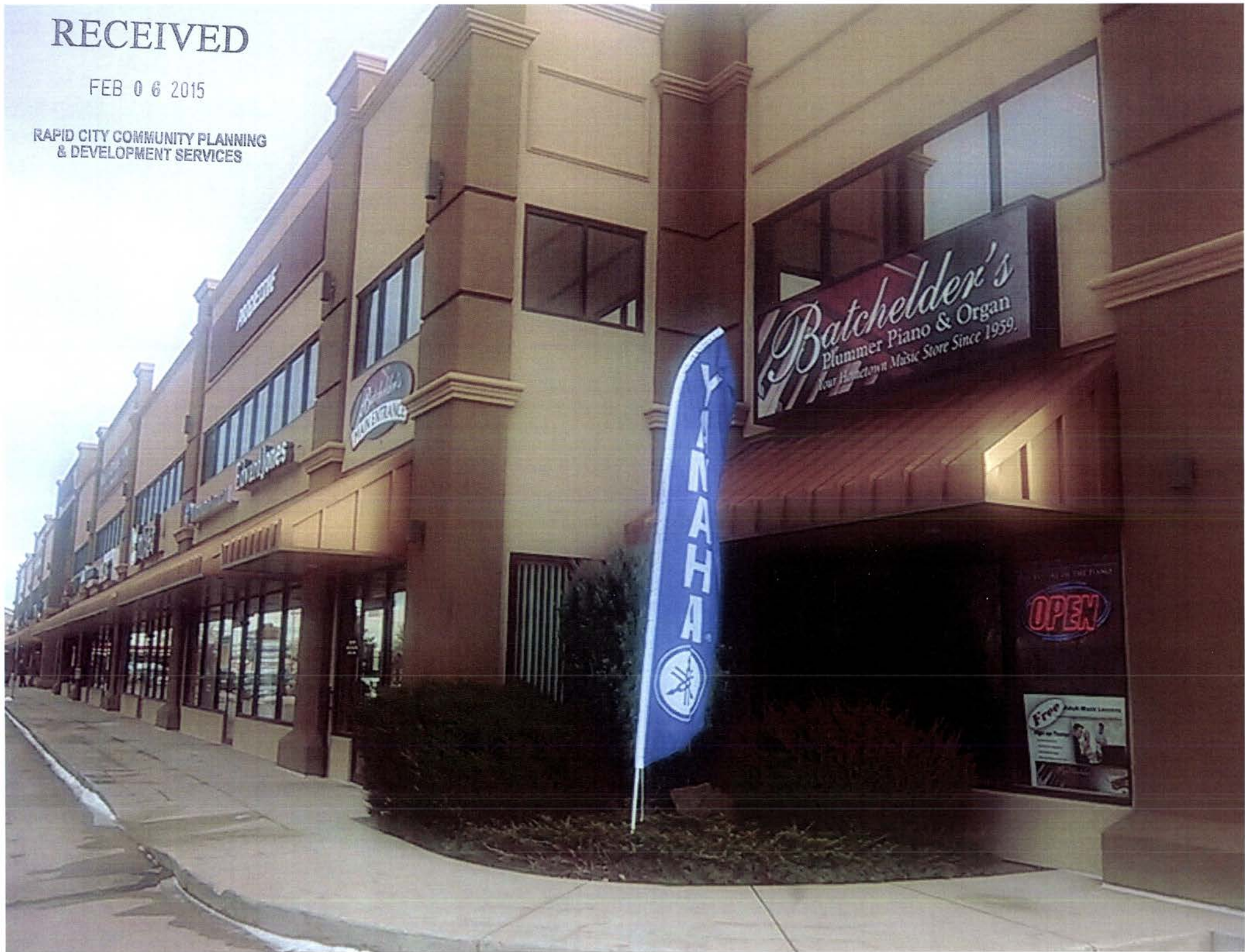
RAPID CITY COMMUNITY PLANNING  
& DEVELOPMENT SERVICES



RECEIVED

FEB 06 2015

RAPID CITY COMMUNITY PLANNING  
& DEVELOPMENT SERVICES



**BATCHELDER'S**  
PLUMBER PIANO & ORGAN  
SPACE FOR LEASE  
970-227-7854  
STATE HOME CARE SERVICES  
718-5004  
Medicare Certified Home Health Care

RECEIVED

FEB 06 2015

RAPID CITY COMMUNITY PLANNING  
& DEVELOPMENT SERVICES

 **mixed.**

**Bella Tan** 

  
**Midcontinent**  
COMMERCIAL

**Edward Jones**

 **Thrivent Financial**  
for Lutherans™

  
**golden living center**  
EMPLOYMENT CENTER

 **OneMain**  
Financial

**PROGRESSIVE**

**KELLY**

**IMPRESSIVE NAILS**

**Trendz**  
STYLING

**PLATO'S**  
CLOSET



# IMPRESSIVE NAILS

105

NAILS

OPEN

RECEIVED

FEB 06 2015

RAPID CITY COMMUNITY PLANNING  
& DEVELOPMENT SERVICES