



SCALE: 1" = 20'
1" CONTOUR INTERVAL
NOVEMBER 12, 2014

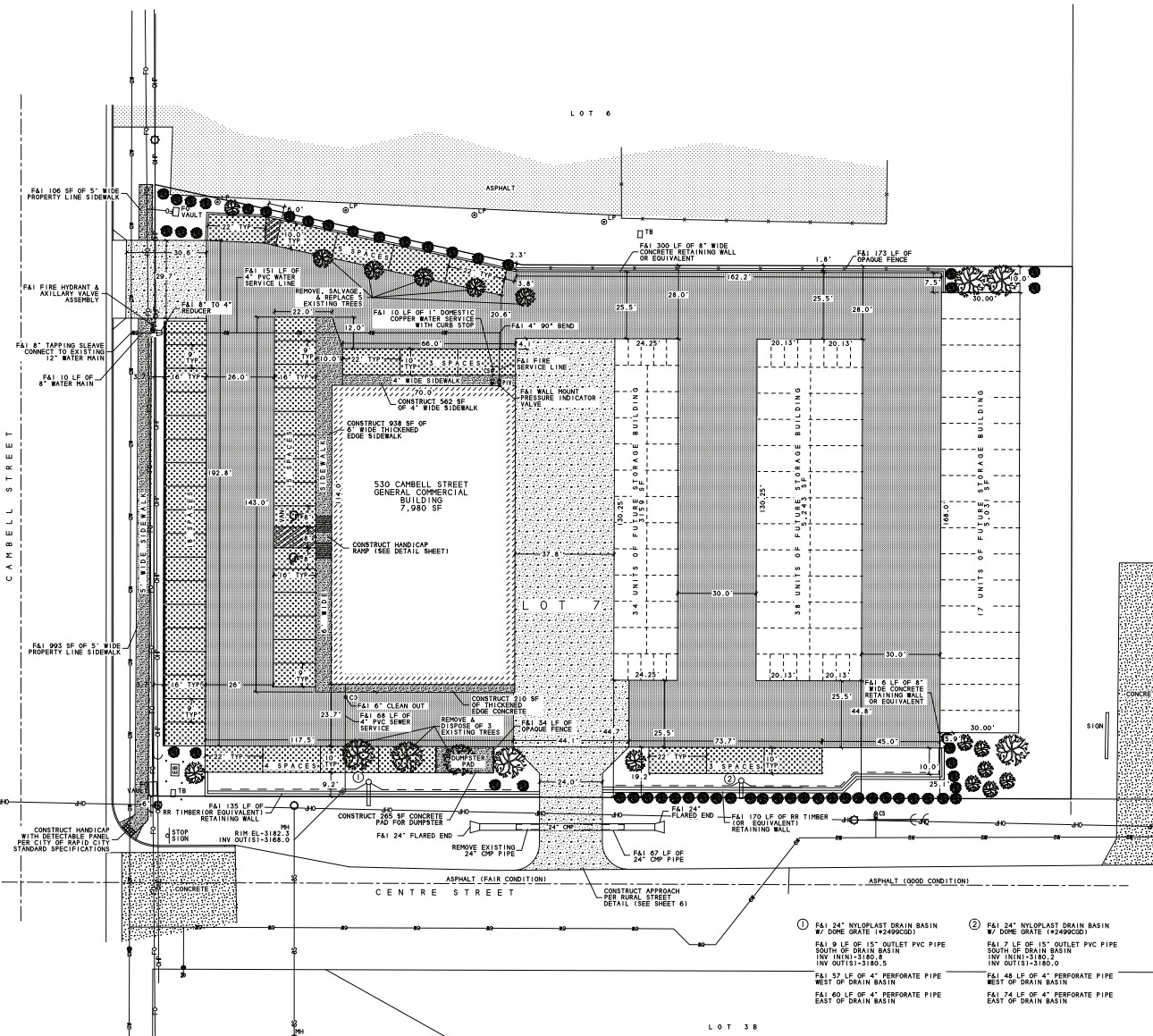
BRITTON ENGINEERING &
LAND SURVEYING, INC
8035 BLACK HAWK ROAD, SUITE 5,
P.O. BOX 649 BLACK HAWK, SD 57718
PH: (605) 716-7988

ELS
BL

LOT 7 OF CABELL SQUARE ADDITION
LOCATED IN THE NW 1/4 OF THE NW 1/4
SECTION 5, T1N, R8E, BHM, RAPID CITY
PENNINGTON COUNTY, SOUTH DAKOTA

SITE PLAN
530 CABELL STREET
WYNGARD INVESTMENTS, LLC

Revision: 14.01.01
Prepared By: JST
Checked By: CAS
Designed By: JST
Date: 11/11/14



- LEGEND**
- CONSTRUCT 8,242 SF OF REINFORCED CONCRETE PAVEMENT AS PER GEOTECHNICAL REPORT FOR APPROACHES & DRIVEWAY LANES
 - CONSTRUCT 2,110 SF OF ASPHALT PAVEMENT AS PER GEOTECHNICAL REPORT FOR LIGHT DUTY PARKING AREAS
 - CONSTRUCT 24,381 SF OF ASPHALT PAVEMENT AS PER GEOTECHNICAL REPORT FOR MEDIUM DUTY DRIVING LANES

- GRASS (100 PTS PER SY)**
- BLUE GRASS
 - WESTERN WHEAT SPECIES
 - BUFFALO GRASS
 - GRAMA GRASS
 - BIG BLUE STEM
 - LITTLE BLUE STEM
 - WHEAT AND THREAD
 - GREEN NEEDLE

- SHRUBS (250 PTS EACH)**
- DICTYANUS OMNIFL.
 - BARBERRY (GOLDEN, ROSE GLOW)
 - CURRANT (RASPINE)
 - POTENTILLA (COMBINATION TRIUMPH, GOLD DROP, GOLDENBERRY)
 - ROSE, HARDY SHRUB
 - SP. GREEN (GOLDENBERRY)
 - ARBORVITAE, GLOBE (HEITZ MIDDLET)
 - JUNIPER (MINT, JOSEF, COMPACT PRITZER, SEA GREEN, SAVIN)

- SMALL TREE (1500 PTS EACH)**
- CHONCHERRY, MAUI
 - MOUNTAIN ASH, SHOWY
 - ASPEN, QUAKING
 - BIRCH, RIVER/SPRING SNOW
 - SIBIRIAN, SPRING SNOW
 - LILAC, JAPANESE TREE

- MEDIUM TREE (1000 PTS EACH)**
- HONEYLOCUST
 - SP. LINE
 - "ROSEMASTER"
 - LINDEN, "LITTLE LEAF"
 - "GREENSPICE"

- LARGE DECIDUOUS TREE (2000 PTS EACH)**
- ACH. GREEN, "PAVING"
 - "MAUNDER"
 - "PRARITE SPIRE"
 - "MONTICALLY CURVEE TREE"
 - "LINDEN, AMERICAN "CENTURY"
 - MAPLE, "AUTUMN GLAZE"
 - OHIO BUCKEYE

LANDSCAPING REQUIREMENTS: LOT 7 OF CABELL SQUARE

DISTURBED AREA	23,120 SF
34 UNIT STORAGE BUILDING	3,159 SF
28 UNIT STORAGE BUILDING AREA	5,243 SF
17 UNIT STORAGE BUILDING AREA	5,031 SF
GENERAL COMMERCIAL BUILDING AREA	7,960 SF
TOTAL BUILDING AREA	21,413 SF

1 EXISTING LARGE TREES (2,000 PTS EA.)	2,000
11,447 GRASS IN ROW (10 PTS PER SY)	12,719
3 PROPOSED LARGE TREES (2,000 PTS EA.)	6,000
2 MEDIUM TREE (1,000 PTS EA.)	2,000
7 SMALL TREE (1500 PTS EA.)	3,750
57 SHRUBS (250 PTS EA.)	14,000
10,353 GRASS (100 PTS PER SY)	11,353
TOTAL POINTS PROVIDED	51,792
TOTAL POINTS REQUIRED	51,757

PARKING REQUIREMENTS:

34 UNIT STORAGE BUILDING (0.25/1000)	3,159 SF - 1 SPACES
38 UNIT STORAGE BUILDING AREA (0.25/1000)	5,243 SF - 2 SPACES
17 UNIT STORAGE BUILDING AREA (0.25/1000)	5,031 SF - 2 SPACES
GENERAL COMMERCIAL BUILDING AREA (1.5/1000)	7,960 SF - 40 SPACES
TOTAL STALLS REQUIRED	45 (INCL. 2 HC SPACES)
TOTAL STALLS PROVIDED	48 (INCL. 2 HC SPACES)