

CURB-STOPS REQUIRED

PARKING STALLS	HANDICAP STALLS	TOTAL
19	1	20

LEGEND

- TREE DECIDUOUS
- TREE CONIFEROUS
- SHRUB
- ELEC LIGHT POLE
- SIGN
- GUY ANCHOR
- ELEC POLE
- TELE PEDESTAL
- UNDERGROUND ELECTRIC
- UNDERGROUND GAS
- UNDERGROUND FIBER
- CHAIN LINK FENCE
- CONCRETE SURFACE

1 LOCATION PLAN
SCALE: 1" = 20'

NOTE:
 EXISTING BUILDING = 4441 S.F.
 @ 11 PARKING SPACES PER 1000 S.F.
 EQUALS TO 49 PARKING SPACES.
 PROPOSED TOWER & EQUIPMENT
 REQUIRES (2) PARKING SPACES.
 TOTAL REQUIRED PARKING SPACES = 51
 TOTAL REQUIRED HANDICAP SPACES = 3
 TOTAL PARKING SPACES AFTER
 CONSTRUCTION = 54

CALL 48 HOURS BEFORE DIGGING
 SOUTH DAKOTA ONE CALL



Engineering
 Architecture
 Surveying
 Environmental

REVISIONS

NO.	DATE	DESCRIPTION
A	10/27/14	REVISION FOR REVIEW
A.1	11/10/14	REVISION PER COMMENTS
A.2	12/10/14	REVISION PER COMMENTS
B	1/20/15	REVISION PER COMMENTS
C	1/20/15	REVISION PER LANDSCAPE PLAN
D	11/18/14	REVISION FOR BID
E	11/18/14	REVISION PER TOWER HEIGHT

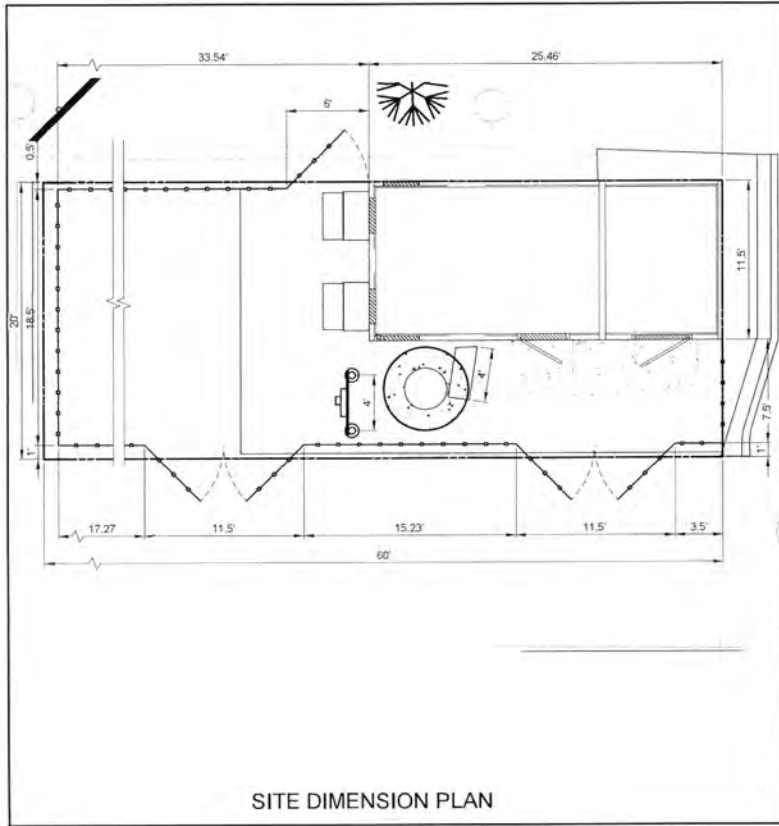
SITE SD-15725.B
 RAPID CITY 4, SD

1900 N MAPLE AVE
 RAPID CITY, SD 57701

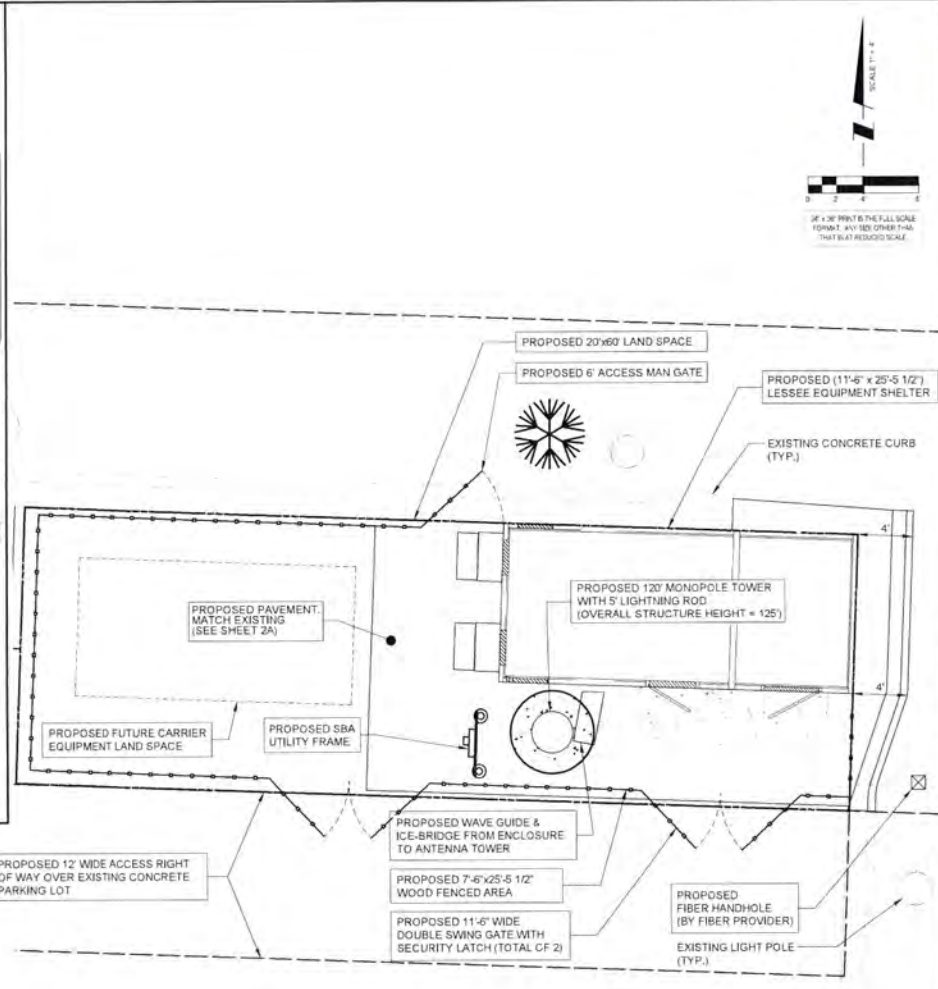
DRAWN BY: DWS
 CHECKED BY: DM
 DATE: 08/05/14
 PROJECT #: 7425

SHEET TITLE
 PARKING PLAN

SHEET NUMBER
PP



SITE DIMENSION PLAN



PAVEMENT MATERIALS AND QUANTITIES

LEASE SITE
133 S.Y.

119 L.F. OF FENCING

THE CONTRACTOR ALSO SHALL INCLUDE A SEPARATE UNIT PRICE PER CUBIC YARD TO REMOVE UNSTABLE OR UNSUITABLE MATERIAL AND HAUL-IN GRANULAR BACKFILL UNDER THE ACCESS DRIVE AND/OR APRON.

CALL 48 HOURS BEFORE DIGGING
SOUTH DAKOTA ONE CALL



WIDSETH SMITH NOLTING
Engineering
Architecture
Surveying
Environmental



NO.	DATE	REVISION
A	05/04/14	ISSUED FOR REVIEW
B	05/21/14	REVISED PER COMMENTS
C	06/03/14	REVISED PER COMMENTS
D	06/10/14	REVISED PER COMMENTS
E	06/17/14	REVISED PER COMMENTS
F	06/24/14	REVISED PER COMMENTS
G	07/01/14	REVISED PER COMMENTS
H	07/08/14	REVISED PER COMMENTS
I	07/15/14	REVISED PER COMMENTS
J	07/22/14	REVISED PER COMMENTS
K	07/29/14	REVISED PER COMMENTS
L	08/05/14	REVISED PER COMMENTS
M	08/12/14	REVISED PER COMMENTS
N	08/19/14	REVISED PER COMMENTS
O	08/26/14	REVISED PER COMMENTS
P	09/02/14	REVISED PER COMMENTS
Q	09/09/14	REVISED PER COMMENTS
R	09/16/14	REVISED PER COMMENTS
S	09/23/14	REVISED PER COMMENTS
T	09/30/14	REVISED PER COMMENTS
U	10/07/14	REVISED PER COMMENTS
V	10/14/14	REVISED PER COMMENTS
W	10/21/14	REVISED PER COMMENTS
X	10/28/14	REVISED PER COMMENTS
Y	11/04/14	REVISED PER COMMENTS
Z	11/11/14	REVISED PER COMMENTS

SITE SD-15725.B
RAPID CITY 4, SD

1900 N MAPLE AVE
RAPID CITY, SD 57701

DRAWN BY	DMS
CHECKED BY	DSM
DATE	3/25/14
PROJECT #	7425

SHEET TITLE
ENGINEERING
SITE PLAN

SHEET NUMBER
C-1