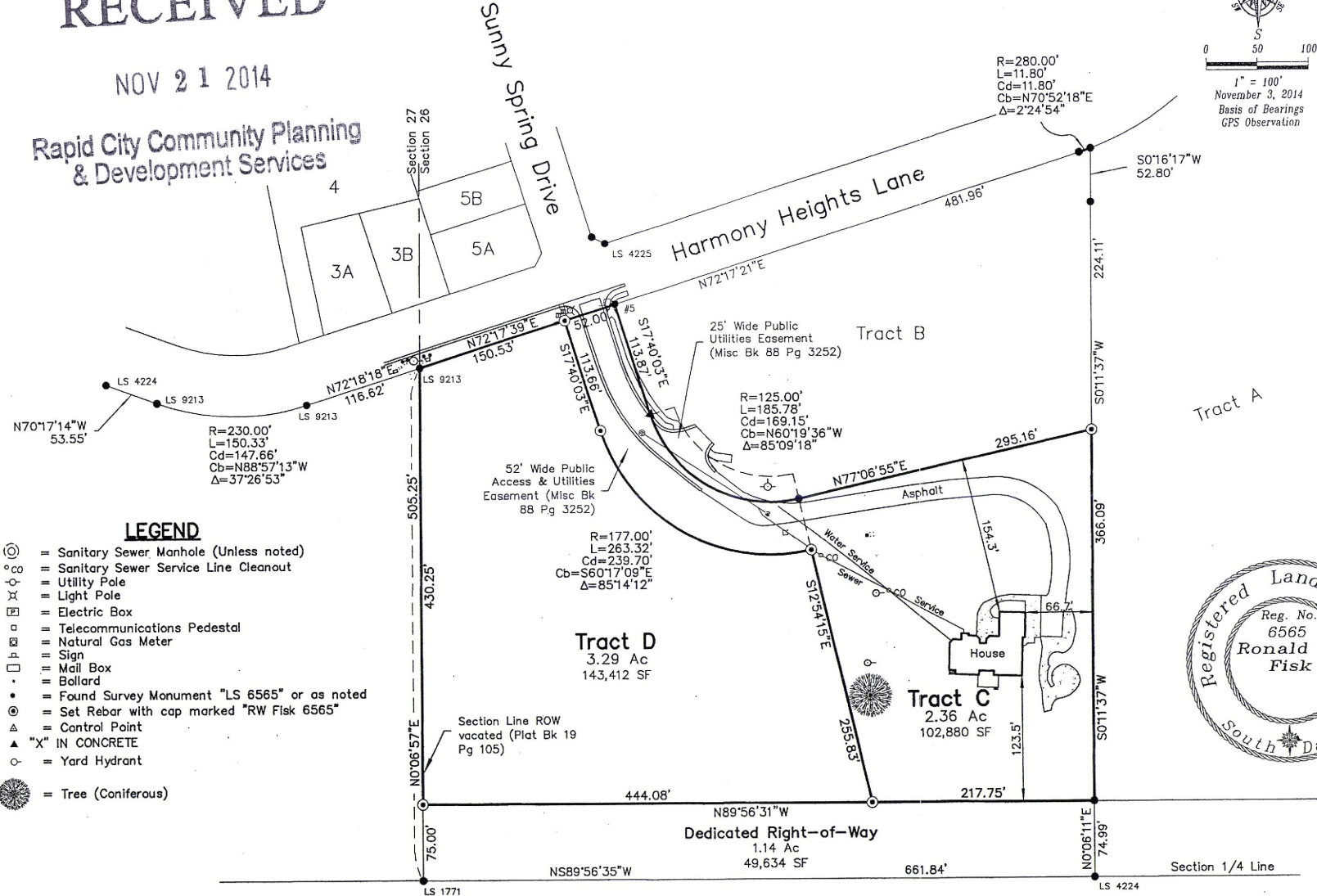
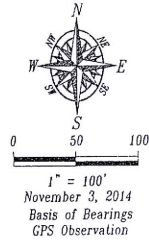


RECEIVED

NOV 21 2014

Rapid City Community Planning & Development Services



- LEGEND**
- ⊙ = Sanitary Sewer Manhole (Unless noted)
  - ⊕ = Sanitary Sewer Service Line Cleanout
  - ⊙ = Utility Pole
  - ⊙ = Light Pole
  - ⊙ = Electric Box
  - ⊙ = Telecommunications Pedestal
  - ⊙ = Natural Gas Meter
  - ⊙ = Sign
  - ⊙ = Mail Box
  - ⊙ = Bollard
  - ⊙ = Found Survey Monument "LS 6565" or as noted
  - ⊙ = Set Rebar with cap marked "RW Fisk 6565"
  - ⊙ = Control Point
  - ⊙ "X" IN CONCRETE
  - ⊙ = Yard Hydrant
  - ⊙ = Tree (Coniferous)



Fisk Land Surveying & Consulting, Inc.  
 1024 Main Street (P.O. Box 8154)  
 Rapid City, South Dakota 57709  
 (605) 348-1539  
 (605) 341-1112 (fx)

Proposed Tracts C and D of Fountain View Subdivision, Rapid City Pennington County, South Dakota

Site Plan

Surveyed by:	CD/ML
Date	11/3/2014
Drawn by:	CDD, RWF
Checked by:	JF
Revisions	

Site Plan	1 of 1
Project No.	14-10-05

PRELIMINARY