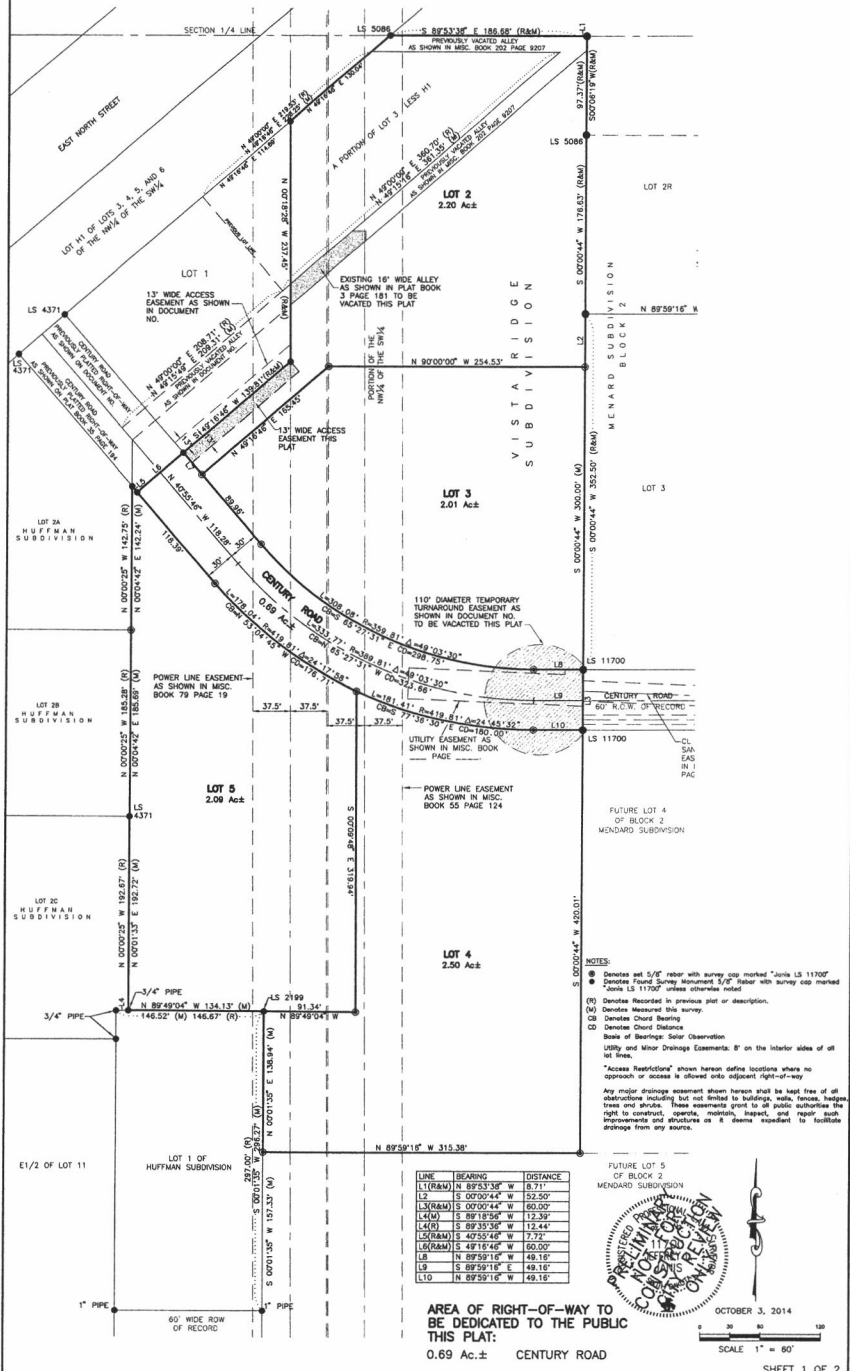


PLAT OF
**LOTS 2 THROUGH LOT 5,
 VISTA RIDGE SUBDIVISION**

(Formerly a portion of the Vacated Alley adjacent to Lot 3 of the NW¹/₄ of the SW¹/₄, Less Lot H1, of Section 32, T2N, R8E, B.H.M., a portion of Lot 3 of the NW¹/₄ of the SW¹/₄, Less Lot H1, of Section 32, T2N, R8E, B.H.M., a portion of the NW¹/₄ of the SW¹/₄ of Section 32, T2N, R8E, B.H.M., LOCATED IN THE NW¹/₄ OF THE SW¹/₄ OF SECTION 32, T2N, R8E, B.H.M., RAPID CITY, PENNINGTON COUNTY, SOUTH DAKOTA



PREPARED BY: SPERLICH CONSULTING, INC. * 821 COLUMBUS STREET, SUITE 1 RAPID CITY SD 57701 * (605) 721-4040

PRELIMINARY PLAT LOTS 2 THROUGH 5 OF VISTA RIDGE SUBDIVISION	LEGAL DESCRIPTION: LOTS 2 THROUGH 5, VISTA RIDGE SUBDIVISION AND LOT 4 AND LOT 7 OF BLOCK 1, AND LOT 4 AND LOT 5 OF BLOCK 2 OF MENARD SUBDIVISION LOCATED IN THE NW ¹ / ₄ OF THE SW ¹ / ₄ SECTION 32, T2N, R8E, B.H.M. RAPID CITY, PENNINGTON COUNTY, SOUTH DAKOTA.	REVISIONS DATE REVISION	SPERLICH Consulting, Inc. 821 Columbus St., Suite 1 Rapid City, SD 57701 TEL: (605) 721-4040 * FAX: (605) 721-4048 E-MAIL: info@sperlichconsulting.com *Engineering *Surveying *Planning
	DRAWN BY: DMM	SHEET 2 / 23	

