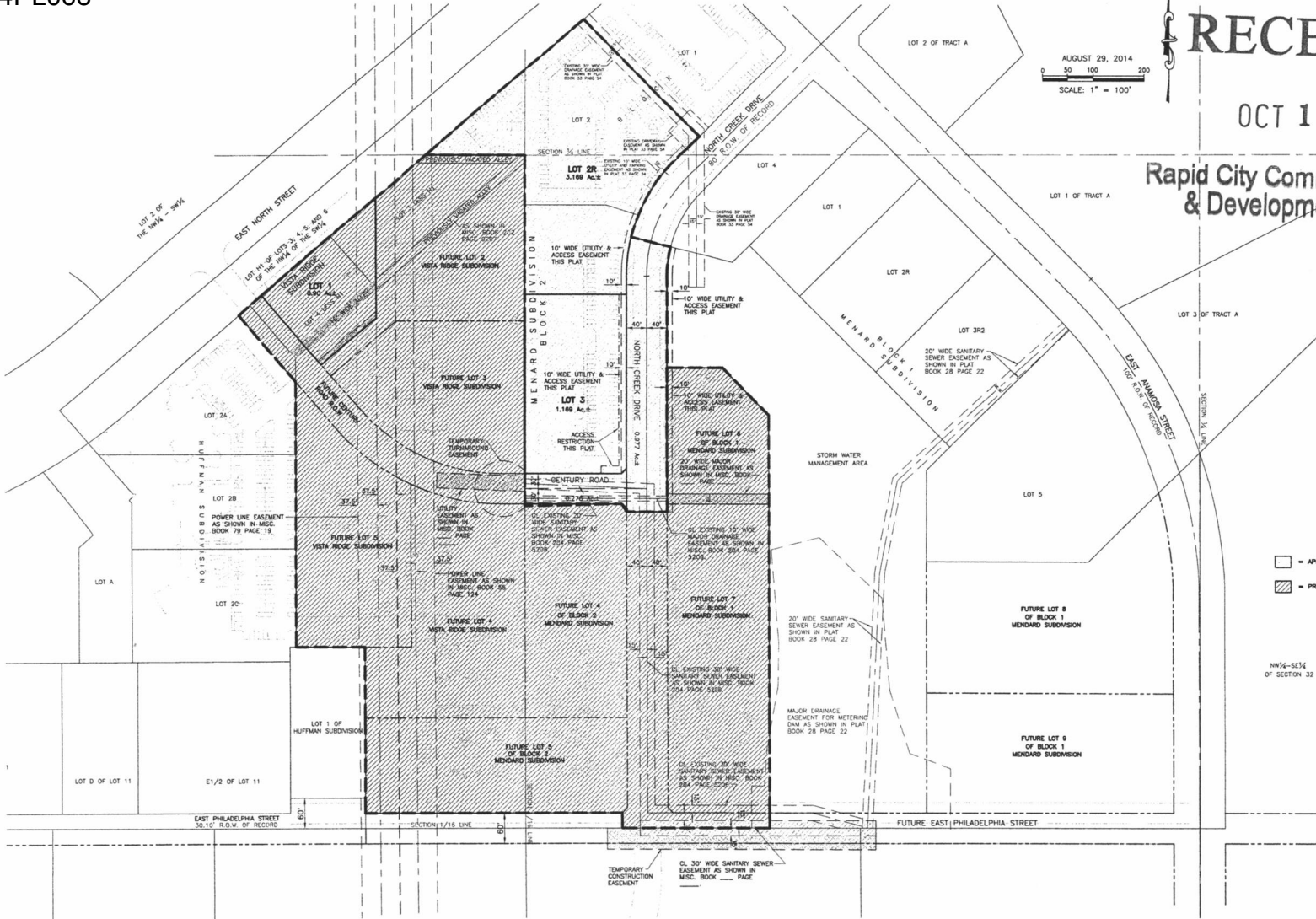


RECEIVED

OCT 17 2014

Rapid City Community Planning & Development Services

AUGUST 29, 2014
 0 50 100 200
 SCALE: 1" = 100'



SPERLICH
 Consulting, Inc.
 827 Columbia St. Suite 101, City, SD 57701
 TELE: (605) 721-4040 • FAX: (605) 721-4048
 E-MAIL: info@sperrlichinc.com
 "Engineering • Surveying • Planning"



REVISIONS	DATE	REVISION

LEGAL DESCRIPTION:
 LOT 2R & LOT 3 OF BLOCK 1 OF MENARD SUBDIVISION OF THE NW¼ SECTION 32, T2N, R10E, SD63RD, SOUTH SHERIDAN COUNTY, SOUTH DAKOTA
 SURVEYED BY: SD 0000000000
 08/14/2014

OVERALL MASTER PLAN

Computer Aided Design & Drafting, Inc. 11111 14th St., Rapid City, SD 57701-1414
 Copyright © 2014 by Computer Aided Design & Drafting, Inc. All rights reserved.