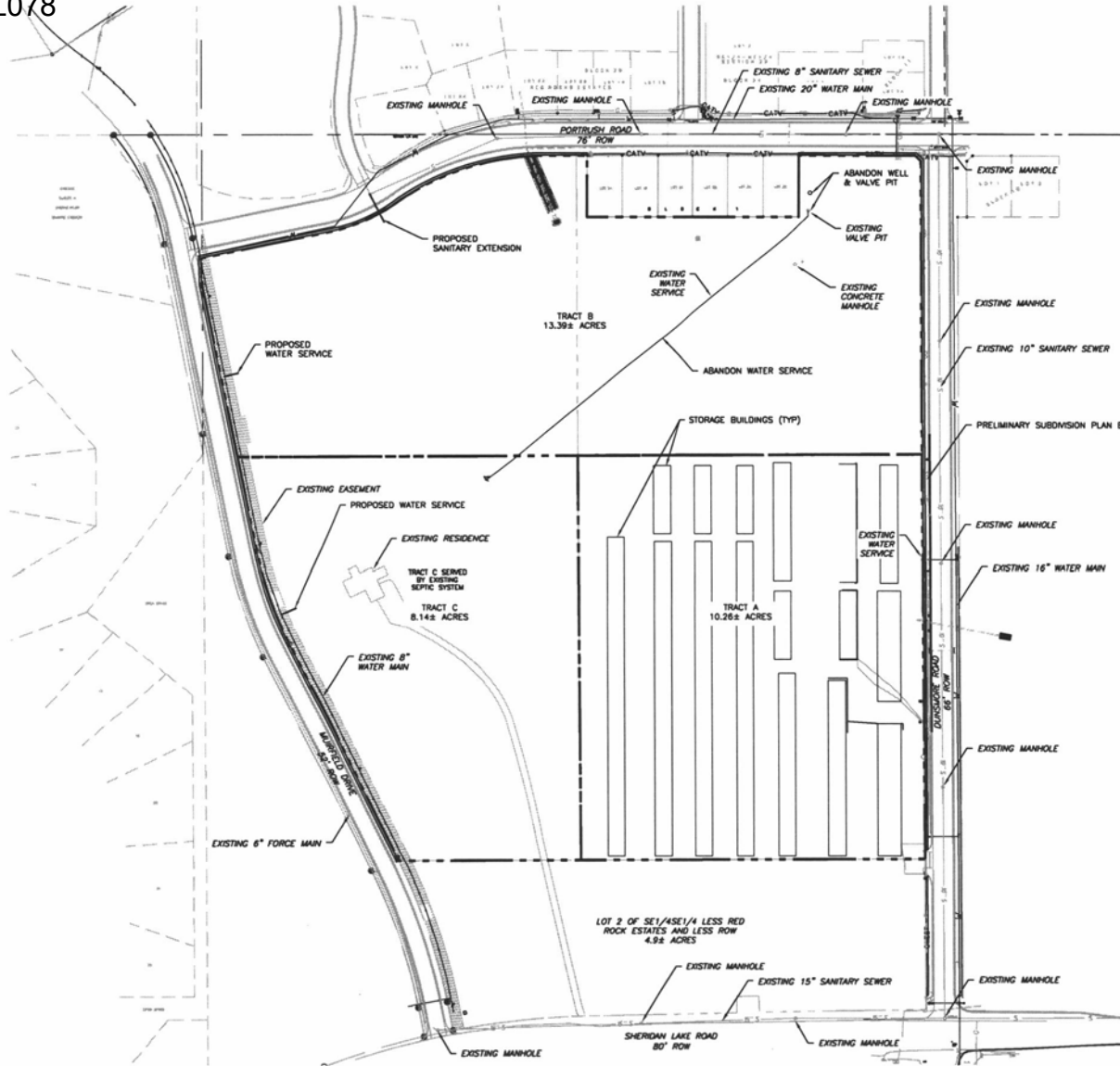


14PL078



RECEIVED

NOV 10 2014

RAPID CITY COMMUNITY PLANNING & DEVELOPMENT SERVICES

DREAM DESIGN INTERNATIONAL, INC.

ENGINEERING, LANDSCAPE ARCHITECTURE, LAND PLANNING, CONSTRUCTION ADMINISTRATION  
828 KANSAS CITY STREET, SUITE 400, RAPID CITY, SD 57701  
PHONE: (605) 348-0838 FAX: (605) 348-0545 WWW.DREAMDESIGNING.COM

RED ROCK SHADOWS  
RAPID CITY, SOUTH DAKOTA



Draw Name:

UTILITY LAYOUT



3 Sheet Number: of 4

CITY OF RAPID CITY

Submittal: 2014-11-07; PRELIM SUBD PLAN

Plans are reviewed for general conformance with applicable governmental regulations, specifications, design criteria and engineering standards. The City of Rapid City does not certify the suitability, accuracy or completeness of the plans or design, which are the responsibility of the engineer of record. All necessary permits shall be obtained prior to construction of the proposed public improvements.

Engineering Review: \_\_\_\_\_ Date: \_\_\_\_\_

COMMENTS

Revisions:

Internal Job No: 14-0720  
Designed By: ACT  
Surveyed By: SURVEYOR  
Drawn By: CM  
Survey Date: DATE

PRELIMINARY FOR REVIEW ONLY