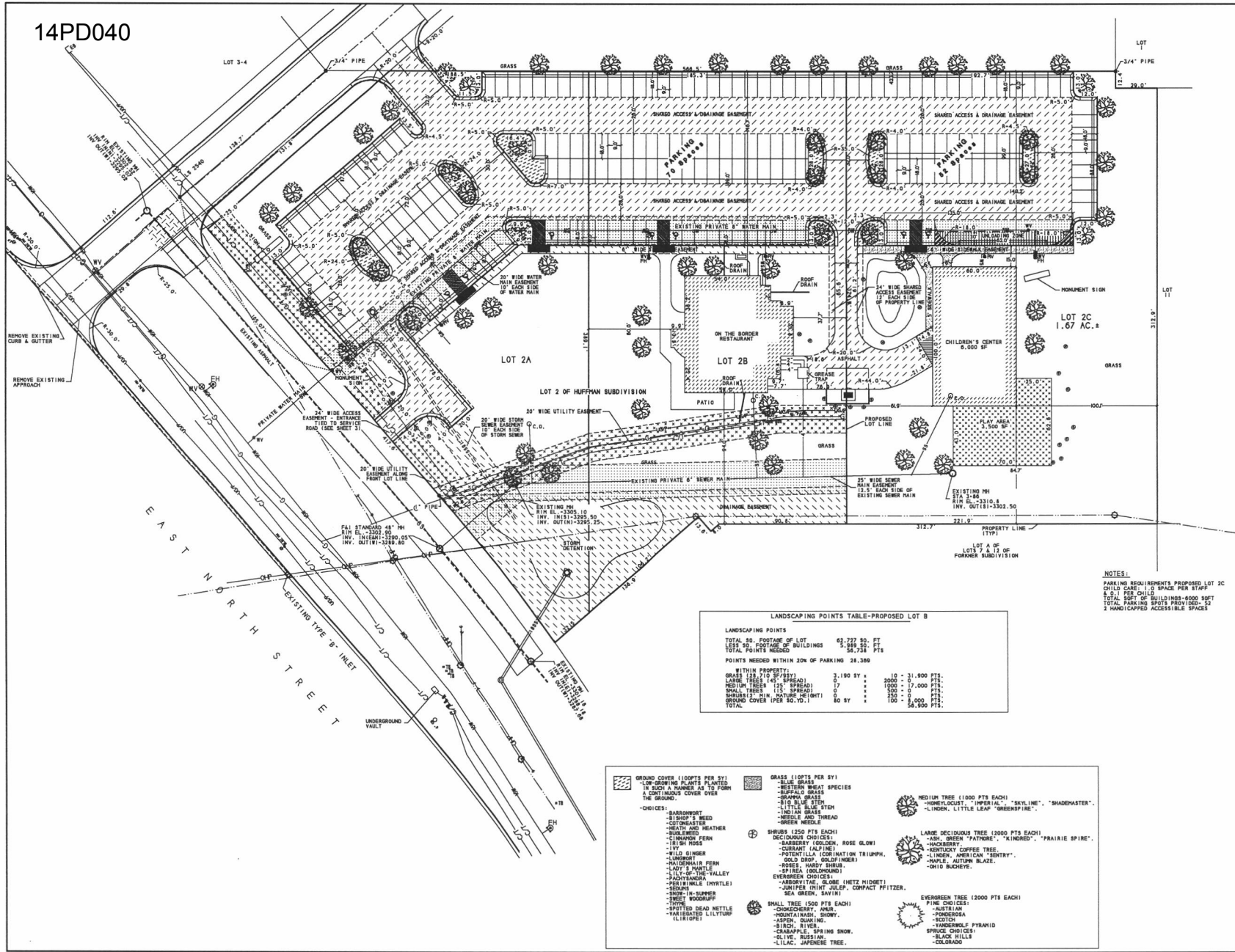




SCALE: 1" = 30'
NOVEMBER 4, 2014



LANDSCAPING POINTS TABLE-PROPOSED LOT B

TOTAL SQ. FOOTAGE OF LOT	62,727 SQ. FT.
LESS SQ. FOOTAGE OF BUILDINGS	5,884 SQ. FT.
TOTAL POINTS NEEDED	28,300
POINTS NEEDED WITHIN 20% OF PARKING	28,300

WITHIN PROPERTY:

GRASS (28.710 SP/FT)	3,190 SY x	10 = 31,900 PTS.
LARGE TREES (12' SPREAD)	7 x	3000 = 21,000 PTS.
MEDIUM TREES (7' SPREAD)	7 x	1000 = 7,000 PTS.
SMALL TREES (3' SPREAD)	7 x	100 = 700 PTS.
SHRUBS (2' M. MATURE HEIGHT)	0 x	250 = 0,000 PTS.
GROUND COVER (PER SQ. FT.)	80 SY x	100 = 8,000 PTS.
TOTAL		56,900 PTS.

- GROUND COVER (100PTS PER SY)
- BLUE GRASS
 - WESTERN WHEAT SPECIES
 - BUFFALO GRASS
 - BIG BLUE STEM
 - TALL BLUE STEM
 - INDIAN GRASS
 - NEEDLE AND THREAD
 - GREER NEEDLE
- SHRUBS (250 PTS EACH)
- ROSE GLOW
 - CURLANT (ALFINE)
 - POTENTIAL COMBINATION TRIUMPH
 - GOLD DROP (GOLF LINKER)
 - SPIREA (DOUGLASS)
 - EVERGREEN CHOICES
 - ABSORBYTAE (GLOBE HETZ MIDNETZ)
 - LOW SPER (HEAT JELP, COMPACT PFITZER)
 - SEA GREEN, SAYING
- SMALL TREE (100 PTS EACH)
- CHOISYERBY, ANKA
 - MOUNTAINASH, SHOWY
 - ASPEN QUAKING
 - PICH YEA
 - BURNING BUSH
 - LILAC, JAPANESE TREE
- GRASS (100PTS PER SY)
- BLUE GRASS
 - WESTERN WHEAT SPECIES
 - BUFFALO GRASS
 - BIG BLUE STEM
 - TALL BLUE STEM
 - INDIAN GRASS
 - NEEDLE AND THREAD
 - GREER NEEDLE
- SHRUBS (250 PTS EACH)
- ROSE GLOW
 - CURLANT (ALFINE)
 - POTENTIAL COMBINATION TRIUMPH
 - GOLD DROP (GOLF LINKER)
 - SPIREA (DOUGLASS)
 - EVERGREEN CHOICES
 - ABSORBYTAE (GLOBE HETZ MIDNETZ)
 - LOW SPER (HEAT JELP, COMPACT PFITZER)
 - SEA GREEN, SAYING
- SMALL TREE (100 PTS EACH)
- CHOISYERBY, ANKA
 - MOUNTAINASH, SHOWY
 - ASPEN QUAKING
 - PICH YEA
 - BURNING BUSH
 - LILAC, JAPANESE TREE
- MEDIUM TREE (1000 PTS EACH)
- "SKYLINE", "SHADEMASTER"
 - "LINCOLN, LITTLE LEAF "GREENSPINE"
- LARGE DECIDUOUS TREE (2000 PTS EACH)
- "PATMORE", "LINCOLN", "PRAIRIE SPIRE"
 - "HOCKEY"
 - "KENNEDY COFFEE TREE"
 - "LINCOLN, AMERICAN BENTNY"
 - "MAPLE, AUTUMN BLAZE"
 - "CHID BUCKEYE"
- EVERGREEN TREE (2000 PTS EACH)
- PINE CHOICES
 - AUSTRIAN
 - HONGKONG
 - SCOTCH
 - MORNING GLORY
 - SPRUCE CHOICES
 - BLACK HILLS
 - COLORADO

NOTES:
PARKING REQUIREMENTS PROPOSED LOT 2C
CHILD CARE - 10 SPACES PER STAFF
8.5 FT PER CHILD
TOTAL SQ FT OF BUILDING-8000 SQ FT
TOTAL PARKING SPACES PROVIDED 90
2 HANDICAPPED ACCESSIBLE SPACES

BRITTON ENGINEERING & LAND SURVEYING, INC.
8035 BLACK HAWK ROAD, SUITE 5,
PO BOX 649 BLACK HAWK, SD 57718
PH: (605) 716-7988

BE
LS

LOT 2C OF HUFFMAN SUBDIVISION
IN THE N1/2 SW1/4 OF SECTION 32
T2N, R8E, BHM, RAPID CITY
PENNINGTON COUNTY, SOUTH DAKOTA

SITE PLAN - LOT 2C
CENTURY DEVELOPMENT
CHILDREN'S CENTER

Author: _____
Drawn By: _____
Checked By: _____
Date: _____

4372
PRELIMINARY

1
1

