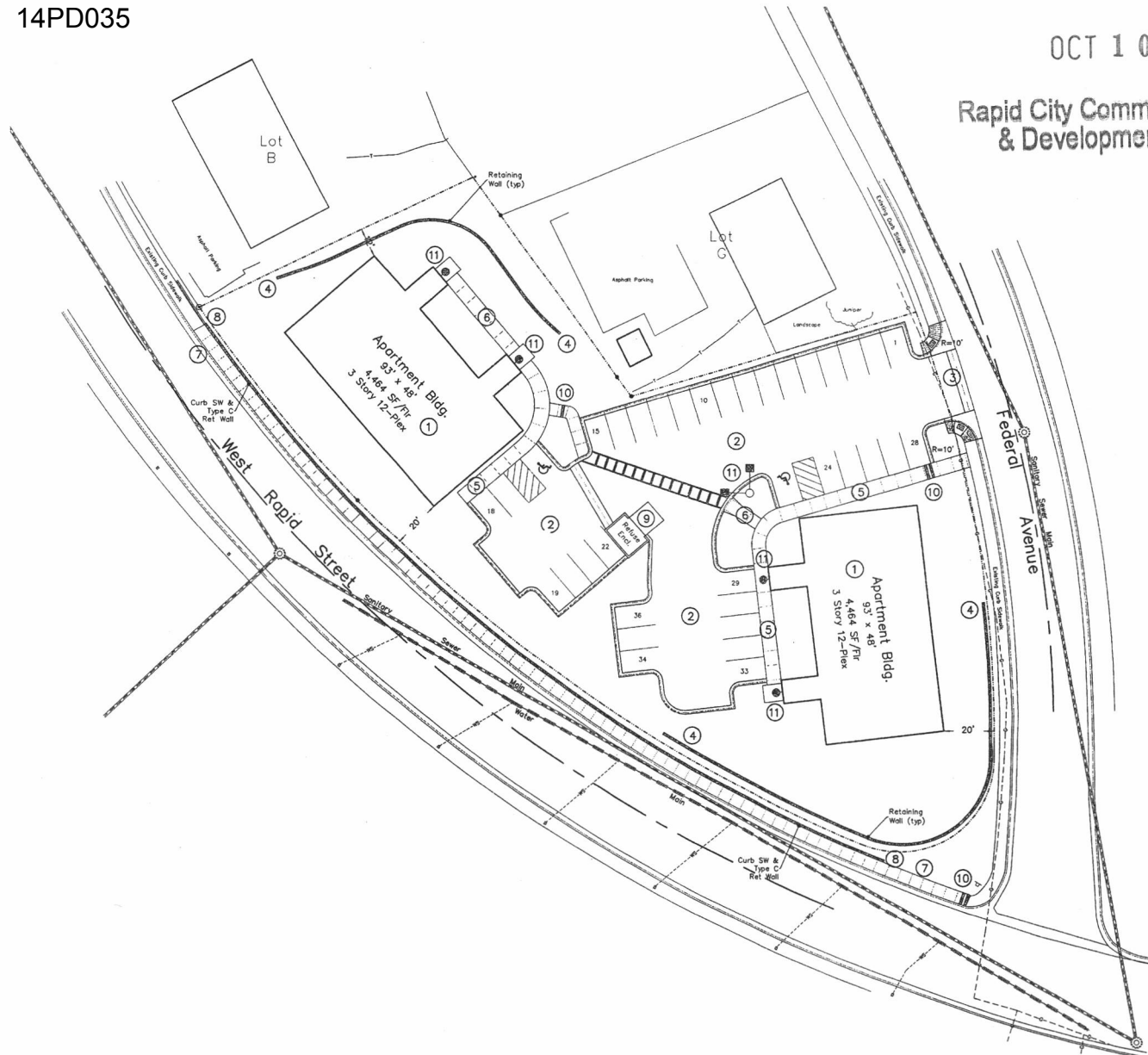
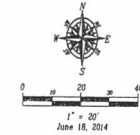


14PD035

RECEIVED

OCT 10 2014

Rapid City Community Planning  
& Development Services

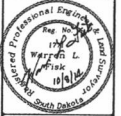


**Construction Notes**

- ① Construct Apartment Buildings  
In accordance with architectural plans
- ② Construct Parking/Circulation Areas  
AC surface in accordance with paving recommendations  
9 x 16 parking stalls with overhang & 2' drive aisles  
Construct perimeter curb as shown (See Half Curb Detail)  
See Stormwater Management Sheet for curb openings to divert stormwater runoff
- ③ Construct Approach Returns  
reinforced concrete (See Detail) USE 4' WIDE VALLEY GUTTER  
Radii as shown (referenced to Top Book Curb)  
Construct sidewalk returns with HC Ramps (See Detail)
- ④ Construct PCC CIP Retaining Walls  
See Spot Elevations for Top (TW) and Bottom (BW) elevations (heights)  
See Details for typical sections
- ⑤ Construct Thickened Edge Sidewalk  
5' wide with 6" reveal  
See Detail for typical cross section  
Install HC Ramps as shown
- ⑥ Construct Standard Sidewalk  
5' wide, 4" Thick, 2" gravel cushion
- ⑦ Construct Curb Sidewalk  
400 LF Curb SW (See Detail)
- ⑧ Construct Type "C" Retaining Wall  
360 LF Ret Wall (See Detail)  
See Spot Elevations for Top (TW) and Bottom (BW) elevations (heights)
- ⑨ Construct Refuse Enclosure  
11' x 15' Enclosure (see elevation drawings for details)  
10' x 10' Reinforced PCC Apron (in accordance with paving recommendation)  
extend valley gutter drainage through enclosure
- ⑩ Construct Sidewalk Gutter Drains  
See Standard Details  
Quantity (6) Six
- ⑪ Site Lighting  
Wall Packs with down hoods at entrances  
Area Lights with down hoods in island
- ⑫ Relocate Existing OH Power Line  
Coordinate with utility service provider

Geometric layout data available upon request.  
Standard Service Rates Apply  
See other Sheets for construction items related to utilities, drainage, stormwater management and landscaping.

Fisk Land Surveying & Consulting Engineers, Inc.  
1022 Main Street - P.O. Box 8154  
Rapid City, South Dakota 57709  
(605) 343-1111  
www.fiskland.com



The information herein is copyright material, and specific to the date, client and purpose as stated.  
No warranty or guarantee is expressed or implied to any party for any other purpose at any time except as stated.

Proposed Site Improvements  
Proposed Lot C Revised of Owen Mann Tract  
SE1/4 SE1/4 Sec. 33, T2N, R7E, B.H.M.  
Rapid City, Pennington County, South Dakota

Surveyed by:	ML
Date:	6/14/14
Drawn by:	RWF
Date:	9/10/14
Checked by:	JF
Revisions:	

Project No.  
14-08-01

Site Plan

