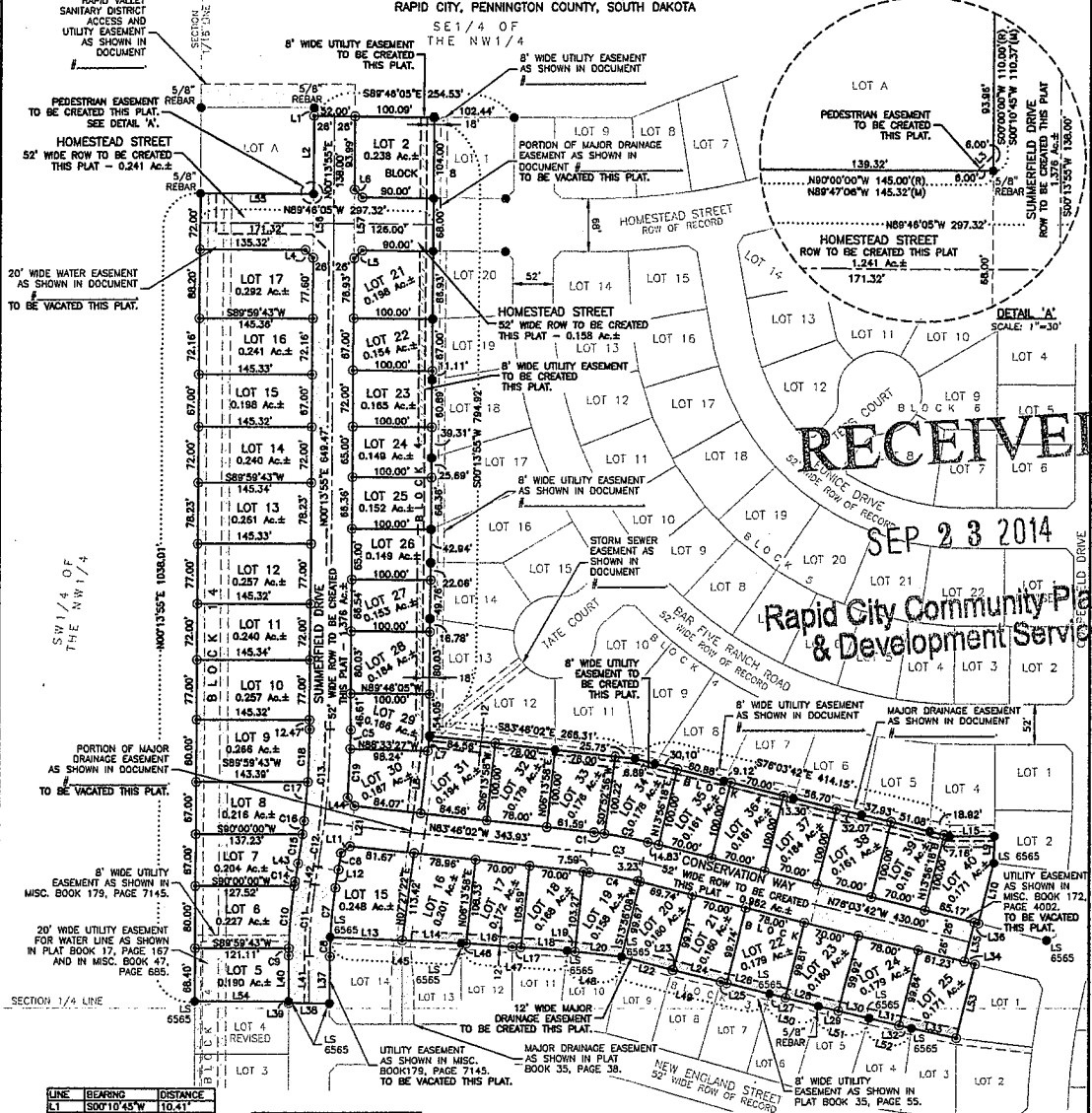


PLAT OF
 LOTS 15-25 OF BLOCK 3, LOTS 21-40 OF BLOCK 4, LOT 2 OF BLOCK 8,
 LOTS 5-17 OF BLOCK 14, CONSERVATION WAY RIGHT-OF-WAY,
 HOMESTEAD STREET RIGHT-OF-WAY, & SUMMERFIELD DRIVE RIGHT-OF-WAY,
 COPPERFIELD VISTAS SUBDIVISION AND
 PEDESTRIAN EASEMENT OF LOT A OF THE SE1/4 OF THE NW1/4

(formerly a portion of the SE1/4 of the NW1/4 and the NE1/4 of the SW1/4 &
 Lot A of the SE1/4 of the NW1/4)
 LOCATED SECTION 4, T1N, R9E, B1M
 RAPID CITY, PENNINGTON COUNTY, SOUTH DAKOTA



LINE	BEARING	DISTANCE
L1	S00°10'45"W	10.41
L2	S00°10'45"W	69.95
L3	S43°11'49"W	76.46
L4	S44°48'05"W	114.14
L5	S45°13'55"W	114.14
L6	S44°48'05"W	114.15
L7	S06°13'58"W	119.59
L8	S06°13'58"W	119.59
L9	S00°49'41"W	54.31
L10	S13°46'36"W	80.12
L11	S13°56'09"W	80.09
L12	S15°59'17"W	163.33
L13	N09°02'48"E	23.57
L14	N87°19'18"W	61.32
L15	N87°19'18"W	72.53
L16	N89°51'01"E	57.51
L17	N89°00'50"W	59.01
L18	N89°00'50"W	55.08
L19	N89°00'50"W	13.02
L20	N83°35'11"W	80.78
L21	N06°13'58"E	52.00
L22	N76°01'54"W	68.43
L23	N76°01'54"W	62.12
L24	N76°01'54"W	62.12
L25	N76°01'54"W	7.87
L26	N76°01'54"W	55.87
L27	N75°57'40"W	51.33
L28	N75°57'40"W	43.59
L29	N75°57'40"W	26.41
L30	N75°59'59"W	35.89
L31	N76°14'28"W	16.01
L32	N76°14'28"W	16.01
L33	N77°44'28"W	59.02
L34	N78°04'22"W	59.02
L35	S76°13'24"E	13.77
L36	S76°03'42"E	13.77
L37	S13°46'36"W	52.00
L38	S13°56'09"W	52.00
L39	N76°13'24"E	5.67
L40	N76°03'54"W	5.67
L41	S00°00'00"E	60.11
L42	S00°10'12"W	60.00
L43	N89°00'00"W	52.09
L44	N89°43'58"W	52.09
L45	N00°00'00"W	2.00
L46	N00°00'17"W	2.00
L47	N02°16'43"E	59.09
L48	N00°11'09"E	60.11
L49	N09°02'48"E	23.57

LINE	BEARING	DISTANCE
L43	N09°02'48"E	23.57
L44	S33°51'20"E	14.33
L45	N87°20'22"W	168.61
L46	N87°19'18"W	166.68
L47	N87°19'18"W	8.19
L48	N87°19'18"W	8.19
L49	N81°14'43"W	130.00
L50	N89°00'50"W	130.05
L51	N83°50'38"W	70.87
L52	N83°38'11"W	70.83
L53	N81°14'43"W	198.38
L54	N76°01'54"W	198.42
L55	N76°13'24"W	85.05
L56	N75°57'40"W	84.92
L57	N76°13'24"W	85.05
L58	N72°59'52"W	85.10
L59	N76°13'24"W	55.18
L60	N76°14'28"W	55.32
L61	S76°13'24"E	95.10
L62	S13°58'08"W	98.06
L63	S90°00'00"W	120.99
L64	S89°59'43"W	120.99
L65	N76°03'54"W	145.00
L66	N89°47'06"W	145.32
L67	N00°14'08"E	82.04
L68	S00°00'41"W	88.01

CURVE	ARC LENGTH	RADIUS	DELTA ANGLE	CHORD BEARING	CHORD LENGTH
C1	15.14	524.00	1°38'58"	N83°53'33"W	15.14
C2	55.60	528.00	6°03'22"	N78°05'23"W	55.57
C3	67.24	500.00	7°42'20"	N78°54'52"W	67.19
C4	63.54	474.00	7°40'50"	N78°55'36"W	63.49
C5	24.83	1176.00	1°12'58"	N07°50'17"E	24.83
C6	21.75	1176.00	1°03'39"	N06°31'00"E	21.72
C7	83.82	574.00	6°22'14"	S05°51'41"W	83.79
C8	25.14	574.00	2°30'35"	S01°18'19"W	25.14
C9	24.95	574.00	1°28'25"	N07°50'17"E	24.93
C10	9.31	628.00	0°51'08"	S07°42'18"W	9.31
C11	80.35	628.00	7°21'07"	S04°48'28"W	80.27
C12	82.79	600.00	6°51'39"	N04°36'58"E	82.70
C13	56.47	1150.00	1°28'49"	N07°38'23"E	56.47
C14	120.45	1150.00	6°00'04"	N03°13'57"E	120.39
C15	6.18	628.00	0°33'49"	S08°45'53"W	6.18
C16	38.02	1124.00	1°56'17"	N06°04'39"E	38.02
C17	15.18	1124.00	0°23'57"	N06°40'14"E	15.18
C18	50.15	1124.00	2°33'22"	N04°57'17"E	50.15
C19	67.58	1124.00	3°28'41"	N01°57'15"E	67.57
C20	62.32	1176.00	3°02'11"	N02°57'39"E	62.31

SEPTEMBER 22, 2014
 SCALE 1" = 100'



LEGEND
 • Denotes Found Survey Monument marked LS 9213, unless otherwise noted
 Ⓢ Denotes set rebar with survey cap marked "Renner - Assoc. 9213"
 (R) Denotes Recorded in previous plat or description.
 (M) Denotes Measured in this survey.
 Basis of Bearings: Geodetic North as determined by Global Positioning System. (GPS) WGS 84.

NOTES
 UTILITY AND MINOR DRAINAGE EASEMENTS: 8' ON THE INTERIOR SIDES OF ALL LOT LINES, EXCEPT WHERE STORM SEWER AND DRAINAGE EASEMENTS EXIST.

ANY MAJOR DRAINAGE EASEMENT SHOWN HEREON SHALL BE KEPT FREE OF ALL OBSTRUCTIONS INCLUDING BUT NOT LIMITED TO BUILDINGS, WALLS, FENCES, HEDGES, TREES AND SHRUBS. THESE EASEMENTS GRANT TO ALL PUBLIC AUTHORIZED THE RIGHT TO CONSTRUCT, OPERATE, MAINTAIN, INSPECT, AND REPAIR SUCH IMPROVEMENTS AND STRUCTURES AS IT DEEMS EXPEDIENT TO FACILITATE DRAINAGE FROM ANY SOURCE.

S:\2658.18 Copperfield Vistas - Phase II\Survey Info\PLAT\2658.18 Plat.dwg, 1, 9/23/2014 3:40:21 PM