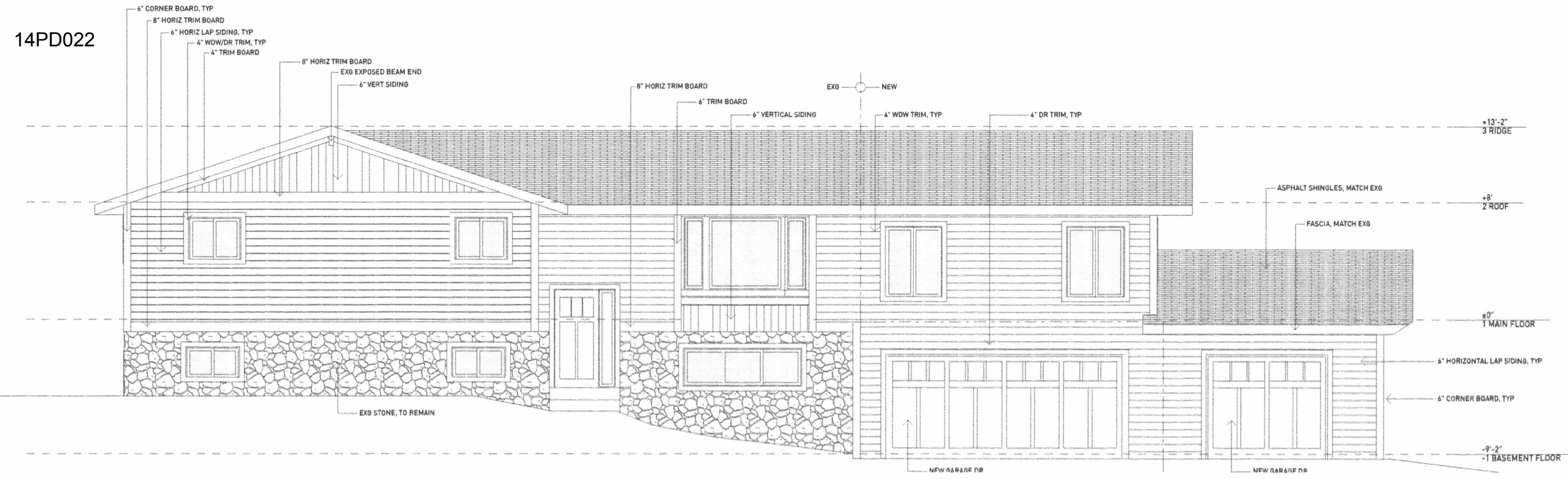
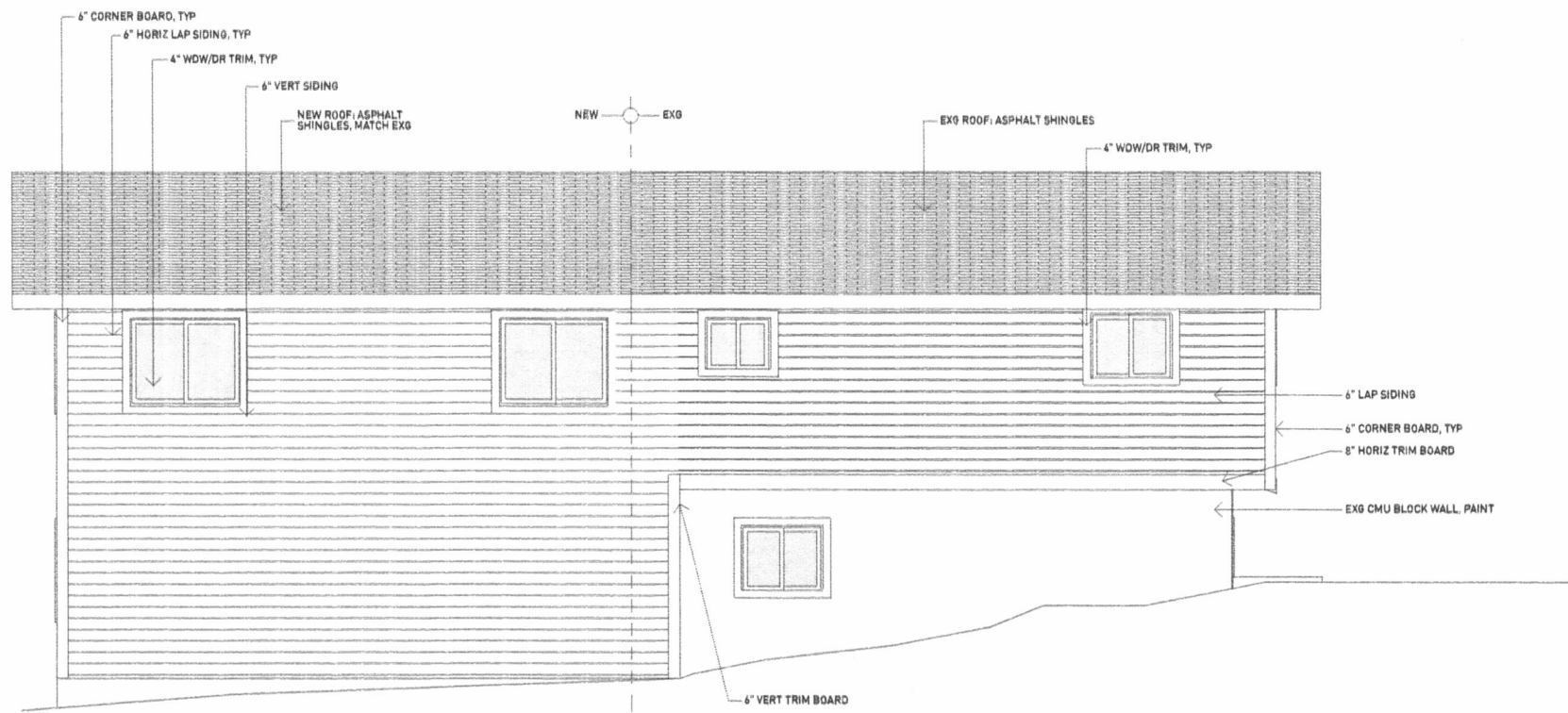


14PD022



FRONT ELEVATION

SCALE: 1/8" = 1'-0"



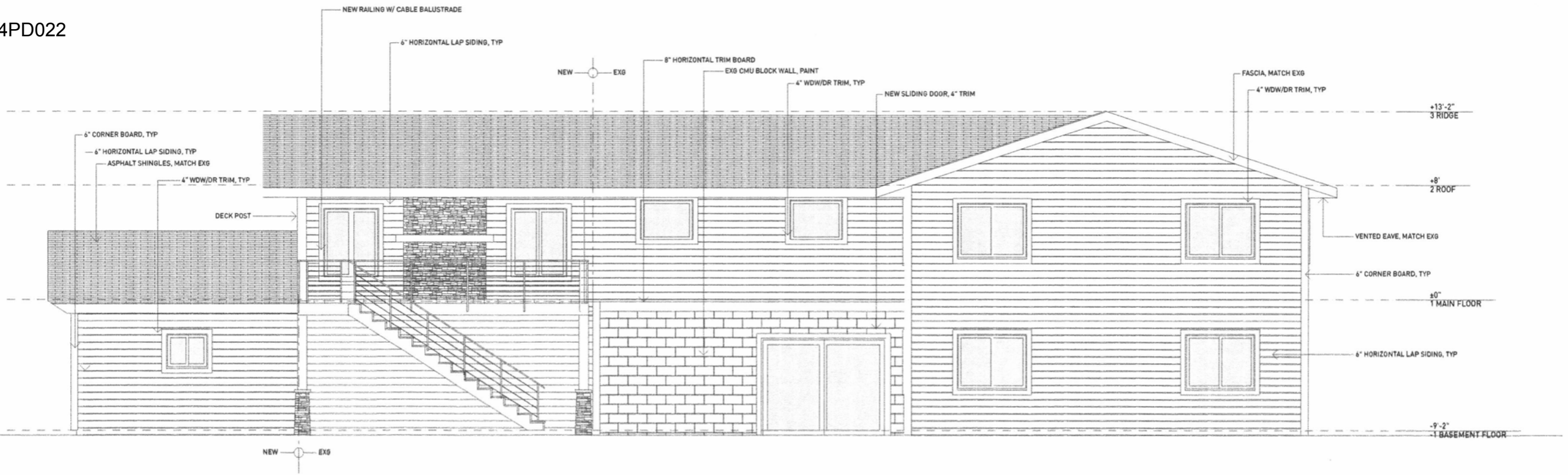
SIDE ELEVATION W/ 5' SETBACK

SCALE: 1/8" = 1'-0"

RECEIVED

JUL 25

RAPID CITY COMMUNITY & DEVELOPMENT



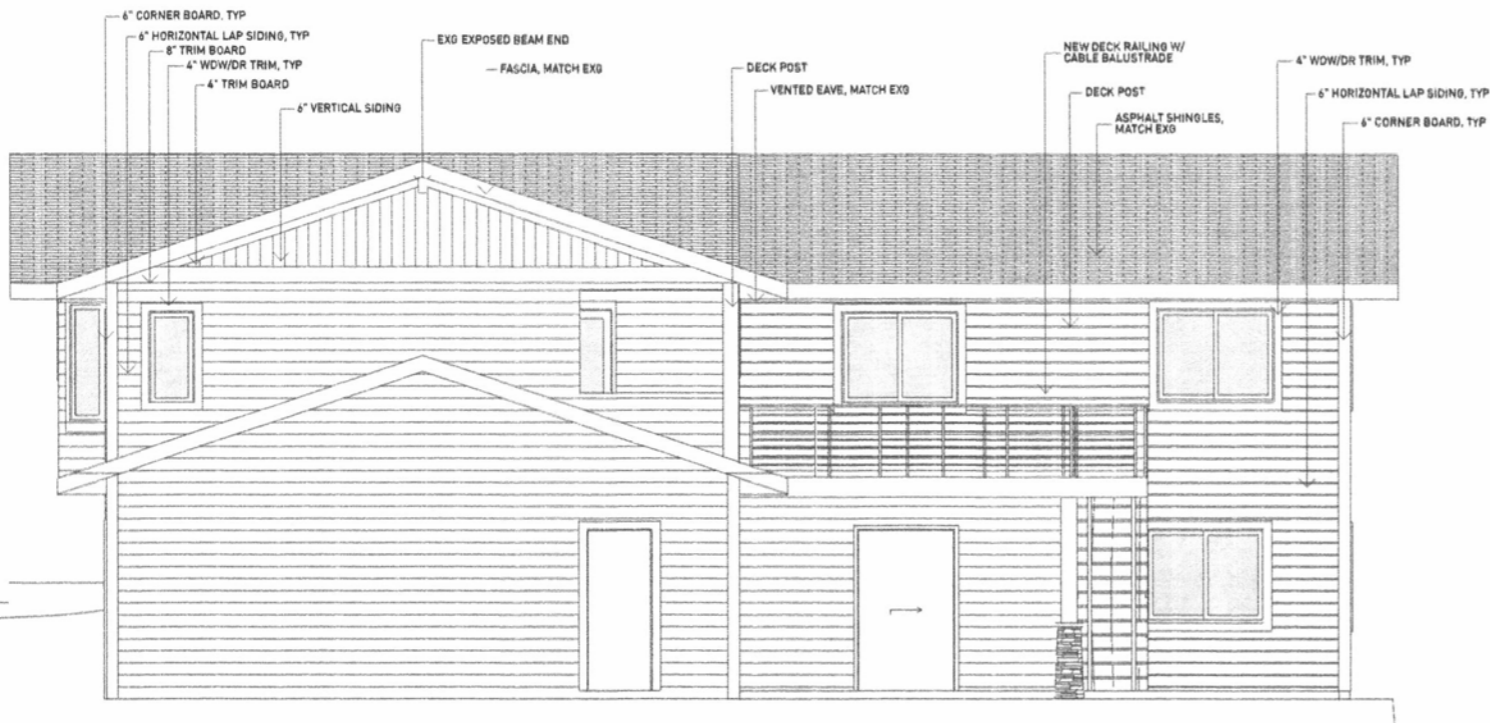
BACK ELEVATION

SCALE: 1/8" = 1'-0"

RECEIVED

JUL 25 2014

RAPID CITY COMMUNITY PLANNING & DEVELOPMENT SERVICES



SIDE ELEVATION

SCALE: 1/8" = 1'-0"