

14PD021

FUTURE IMPROVEMENTS LOT 1A OF LOT 1 OF BLOCK 1 STONEY CREEK SOUTH SUBDIVISION

PROPOSED IMPROVEMENTS BY WORK MAJOR IMPROVEMENTS ELEMENT

LOT 6 OF BLOCK 2 STONEY CREEK SOUTH SUBDIVISION

FUTURE IMPROVEMENTS

FURNISH & INSTALL 394 Sq.Yds. OF REINFORCED CONCRETE DRIVEWAY AND BUMPER PAD.

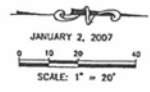
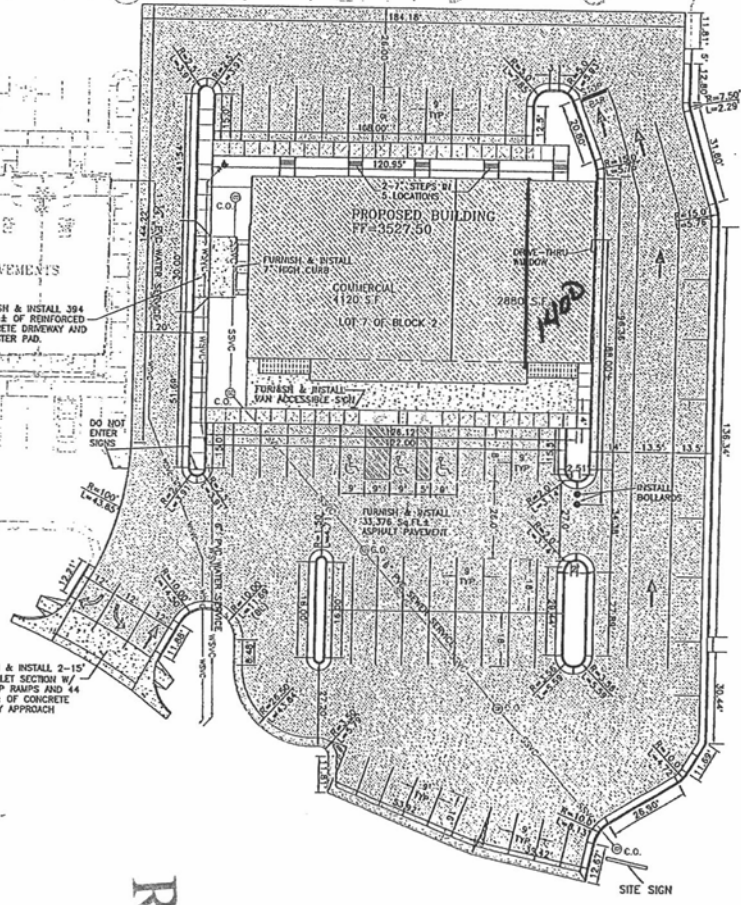
DO NOT ENTER SIGNS

FURNISH & INSTALL 2-15' RAD. FILLET SECTION W/ HANDICAP RAMPS AND 44 Sq.Yds. OF CONCRETE DRIVEWAY APPROACH

LOT 7 BLOCK 2, BLDG. A

STANDARD STALLS	=	52 STALLS
PARALLEL PARKING STALLS	=	8 STALLS
TOTAL STALLS PROVIDED	=	60 STALLS
STALLS PROVIDED IN STACKING	=	6 STALLS
H.C. STALLS PROVIDED	=	3 STALLS

RECEIVED  
 JUL 25 2014  
 RAPID CITY COMMUNITY PLANNING & DEVELOPMENT SERVICES



UTILITIES

LOCATE UTILITIES: SOUTH DAKOTA ONE CALL  
 115 Evergreen Heights Drive  
 Rapid City, SD 57109  
 (605) 781-7474

THE LOCATIONS OF EXISTING UNDERGROUND UTILITIES ARE SHOWN BY AN APPROXIMATE WAY ONLY AND HAVE NOT BEEN INDEPENDENTLY VERIFIED BY THE ENGINEER OR THEIR REPRESENTATIVES. THE CONTRACTOR SHALL DETERMINE THE EXACT LOCATION OF ALL EXISTING UTILITIES BEFORE ANY AND ALL DAMAGES WHICH MIGHT BE OCCURRED BY THE CONTRACTOR'S FAILURE TO EXACTLY LOCATE AND PRESERVE ANY AND ALL UNDERGROUND UTILITIES.

CATRON BOULEVARD  
 VARIABLE WIDTH R.O.W.

LEGEND

- FURNISH & INSTALL 225.85 Sq.Yds.± OF STANDARD SIDEWALK
- FURNISH & INSTALL 137.3 Sq.Yds.± OF THICKENED EDGE SIDEWALK
- BL CURB & GUTTER TOTAL LINEAL FOOT= 421.6
- STANDARD CURB & GUTTER TOTAL LINEAL FOOT= 547.96

PROPOSED BUILDING:  
 FURNISH & INSTALL 266 L.F. OF 6" PVC SEWER SERVICE W/ 5 CLEANOUTS  
 FURNISH & INSTALL 199 L.F. OF 6" PVC WATER SERVICE

FUTURE BUILDING:  
 FURNISH & INSTALL 199.5 L.F. OF 1 1/2" WATER SERVICE

CITY OF RAPID CITY  
 GROWTH MANAGEMENT DEPT.  
 DEVELOPMENT SERVICES

Plans are reviewed for general conformance with applicable governmental regulations, design criteria and engineering standards. The City of Rapid City does not certify the suitability, adequacy or completeness of records, all which are the responsibility of the engineer or design. Necessary permits shall be obtained prior to construction of the proposed public improvements.

Engineering Reviewer \_\_\_\_\_ Date \_\_\_\_\_

COMMENTS \_\_\_\_\_



DATE	REVISIONS
8/27/17	ADDITION
8/27/17	REVISED CURB & GUTTER, WALKER
8/27/17	REWORKED PARKING LAYOUT
8/27/17	ADJUSTED DRIVEWAY
8/27/17	ADJUSTED DRIVEWAY

LEGAL DESCRIPTION:  
 LOT 7 OF BLOCK 2, SUBDIVISION STONEY CREEK SOUTH SUBDIVISION, RAPID CITY, SOUTH DAKOTA, AS SHOWN ON THE MAP OF THE S.W. 1/4 OF THE S.W. 1/4 OF SECTION 10, T42N, R100W, SD 60,000, AS AMENDED BY ORDINANCE 14-01, 14-02, 14-03, 14-04, 14-05, 14-06, 14-07, 14-08, 14-09, 14-10, 14-11, 14-12, 14-13, 14-14, 14-15, 14-16, 14-17, 14-18, 14-19, 14-20, 14-21, 14-22, 14-23, 14-24, 14-25, 14-26, 14-27, 14-28, 14-29, 14-30, 14-31, 14-32, 14-33, 14-34, 14-35, 14-36, 14-37, 14-38, 14-39, 14-40, 14-41, 14-42, 14-43, 14-44, 14-45, 14-46, 14-47, 14-48, 14-49, 14-50, 14-51, 14-52, 14-53, 14-54, 14-55, 14-56, 14-57, 14-58, 14-59, 14-60, 14-61, 14-62, 14-63, 14-64, 14-65, 14-66, 14-67, 14-68, 14-69, 14-70, 14-71, 14-72, 14-73, 14-74, 14-75, 14-76, 14-77, 14-78, 14-79, 14-80, 14-81, 14-82, 14-83, 14-84, 14-85, 14-86, 14-87, 14-88, 14-89, 14-90, 14-91, 14-92, 14-93, 14-94, 14-95, 14-96, 14-97, 14-98, 14-99, 14-100.

SPERLICH Consulting, Inc.  
 821 Columbus St., Rapid City, SD 57701  
 TELE: (605) 721-4040 • FAX: (605) 721-4041