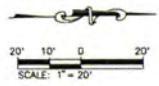


- GRADING LEGEND**
- EXISTING ASPHALT PAVEMENT
 - PROPOSED ASPHALT PAVEMENT
 - TRAILHEAD SURFACING (REFER TO LANDSCAPE PLAN)
 - EXISTING CONTOURS
 - PROPOSED CONTOURS
 - SPOT ELEVATION (FINISHED GRADE)
 - TOP CURB ELEVATION
 - FLOW LINE ELEVATION
 - TOP WALL
 - DRAINAGE SWALE
 - SILT FENCE
 - WORK LIMITS



**PRELIMINARY
DRAWING
95% SUBMITTAL**

Prepared For: **Public Works Department**
 1961 Cherokee Drive
 Rapid City, SD 57703
 Phone: (605) 341-7300
 www.ci.rapidcity.sd.us

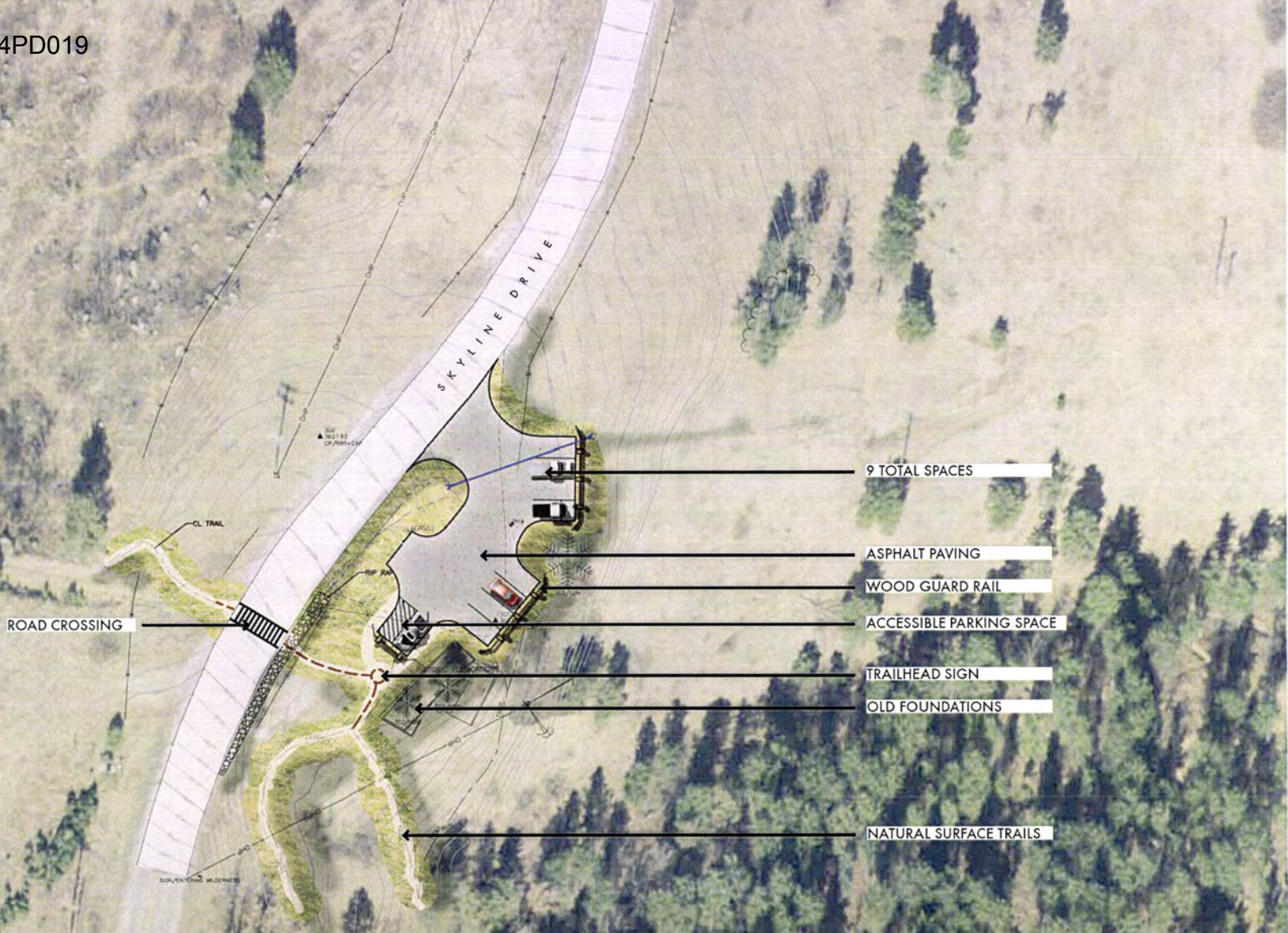
catet
 Engineering & Surveying

SKYLINE WILDERNESS PARK
 TRAILHEAD DEVELOPMENT
 RAPID CITY PARKS AND RECREATION
 CITY OF RAPID CITY PROJECT NO. 18-13-018

Sheet Title:
 DINOSAUR PARK
 GRADING PLAN

Sheet:
C1.4

Scale:	AS NOTED
Designed By:	DMV
Drawn By:	RF
Design Date:	12.11
Print Date:	XXXXXX
Internal Job No.:	13106.09
Surveyed By:	ASB/MS/JS
Survey Date:	12.11
Revisions:	



ROAD CROSSING

CL TRAIL

RP RM

SKYLINE DRIVE

3637.82
OF POINT A

9 TOTAL SPACES

ASPHALT PAVING

WOOD GUARD RAIL

ACCESSIBLE PARKING SPACE

TRAILHEAD SIGN

OLD FOUNDATIONS

NATURAL SURFACE TRAILS

14PD019

WEST FULTON

LS 1019

END OF FULTON CURRENTLY

STORMWATER CONTROL

10 TOTAL PARKING SPACES

FUTURE RESTROOM BUILDING

TRAILHEAD SIGN

NATURAL SURFACE TRAIL
TO DINOSAUR PARK AND
SKYLINE TRAILS

BALANCE
OF LOT 5
130623± SQ. FT.
2.999± ACRES



