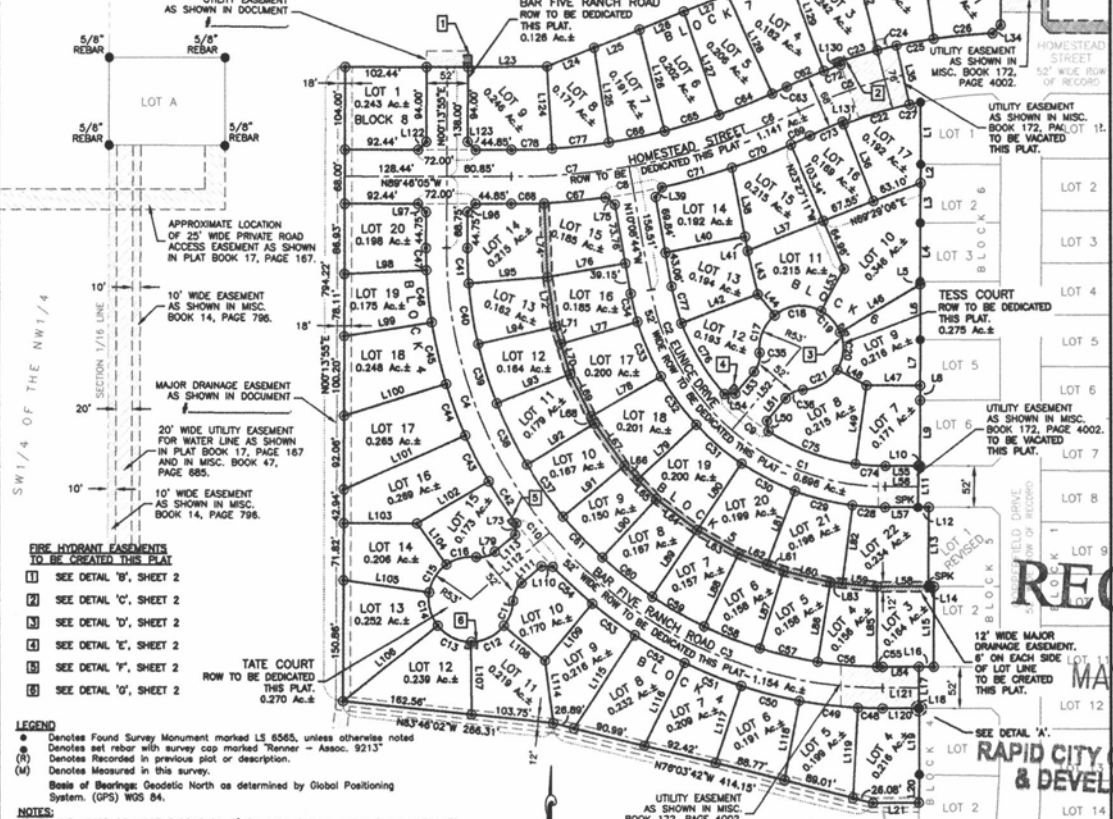


LOTS 4-20 OF BLOCK 4, LOTS 3-22 OF BLOCK 5, LOTS 7-17 OF BLOCK 6, LOTS 1-9 OF BLOCK 7, LOT 1 OF BLOCK 8, BAR FIVE RANCH ROAD RIGHT-OF-WAY, EUNICE DRIVE RIGHT-OF-WAY, HOMESTEAD STREET RIGHT-OF-WAY, TATE COURT RIGHT-OF-WAY, & TESS COURT RIGHT-OF-WAY, COPPERFIELD VISTA SUBDIVISION

14PL033

SE1/4 OF THE NW1/4

(formerly a portion of the SE1/4 of the NW1/4) LOCATED SECTION 4, T1N, R8E, BHM RAPID CITY, PENNINGTON COUNTY, SOUTH DAKOTA

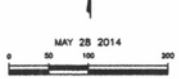


- FIRE HYDRANT EASEMENTS TO BE CREATED THIS PLAT
1 SEE DETAIL 'B', SHEET 2
2 SEE DETAIL 'C', SHEET 2
3 SEE DETAIL 'E', SHEET 2
4 SEE DETAIL 'F', SHEET 2
5 SEE DETAIL 'G', SHEET 2

LEGEND
Denotes Found Survey Monument marked LS 6565, unless otherwise noted
Denotes set rebar with survey cap marked 'Renner - Assoc. 9213'
Denotes Recorded in previous plat or description.
Denotes Measured in this survey.
Basis of Bearings: Geodetic North as determined by Global Positioning System. (GPS) WGS 84.

NOTES
UTILITY AND MINOR DRAINAGE EASEMENTS: 6" ON THE INTERIOR SIDES OF ALL LOT LINES.
ANY MAJOR DRAINAGE EASEMENT SHOWN HEREON SHALL BE KEPT FREE OF ALL OBSTRUCTIONS INCLUDING BUT NOT LIMITED TO BUILDINGS, WALLS, FENCES, HEDGES, TREES AND SHRUBS. THESE EASEMENTS GRANT TO ALL PUBLIC AUTHORITIES THE RIGHT TO CONSTRUCT, OPERATE, MAINTAIN, INSPECT, AND REPAIR SUCH IMPROVEMENTS AND STRUCTURES AS IT DEEMS EXPEDIENT TO FACILITATE DRAINAGE FROM ANY SOURCE.

Table with columns: CURVE, ARC LENGTH, RADII, DELTA ANGLE, CHORD BEARING, CHORD LENGTH. Lists curve data for various lot boundaries.



MAY 28 2014

SCALE 1" = 100'

Table with columns: LINE BEARING, DISTANCE. Lists line bearings and distances for lot boundaries.



Table with columns: LINE BEARING, DISTANCE. Lists line bearings and distances for the Bar Five Ranch Road easement.