

14VR002

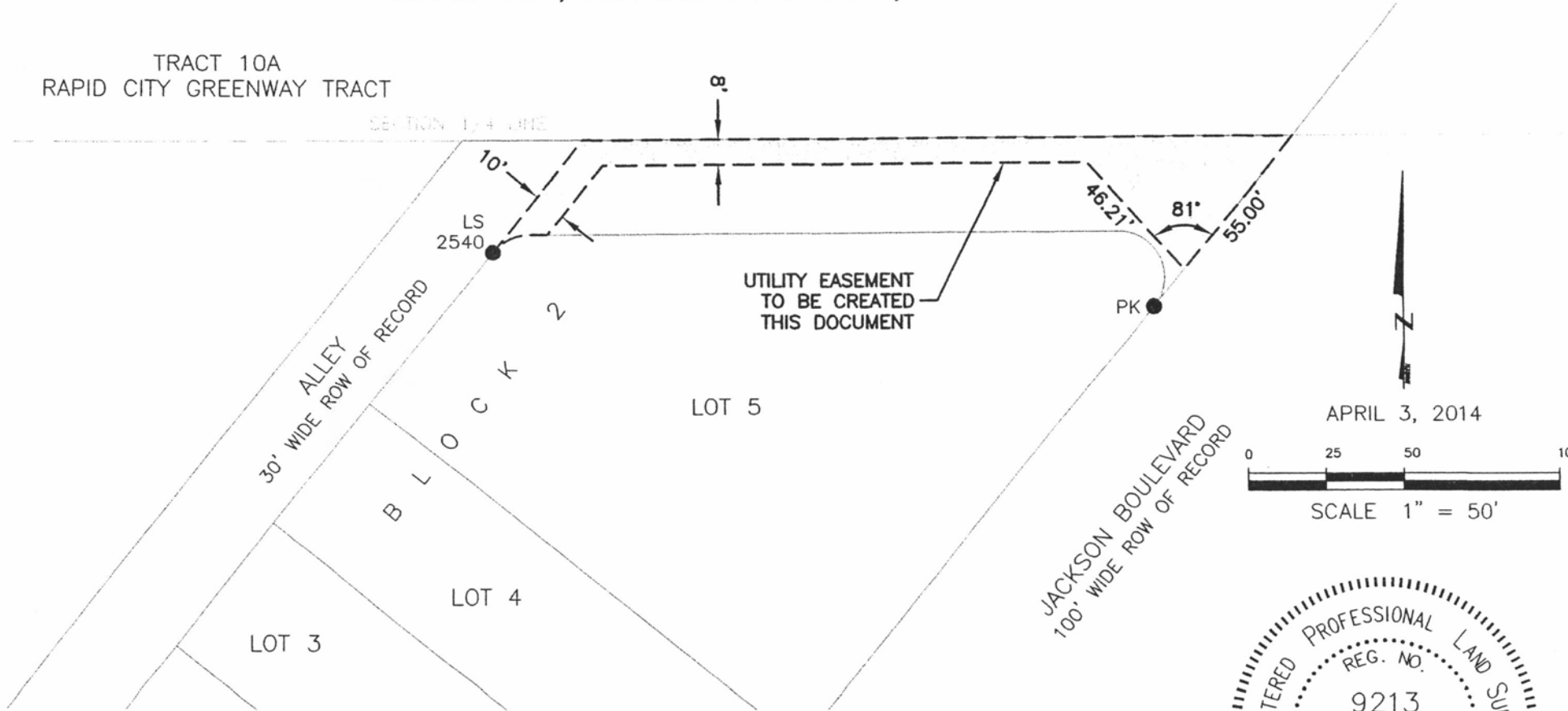
UTILITY EASEMENT

ALLEY RIGHT-OF-WAY LYING ADJACENT TO THE NORTH BOUNDARY LINE OF LOT 5, BLOCK 2 OF RAPID RIVER SUBDIVISION

LOCATED IN THE NE1/4 OF THE SE1/4
SECTION 3, T1N, R7E, BHM
RAPID CITY, PENNINGTON COUNTY, SOUTH DAKOTA

TRACT 10A
RAPID CITY GREENWAY TRACT

SECTION 1/4 LINE



CITY HALL 1903

RENNER & ASSOCIATES, LLC.

616 SIXTH ST. * RAPID CITY, SD 57701
PHONE: 605/721-7310 * FAX: 605/721-7313

