

Lot 14R

Lot 5

Lot 4

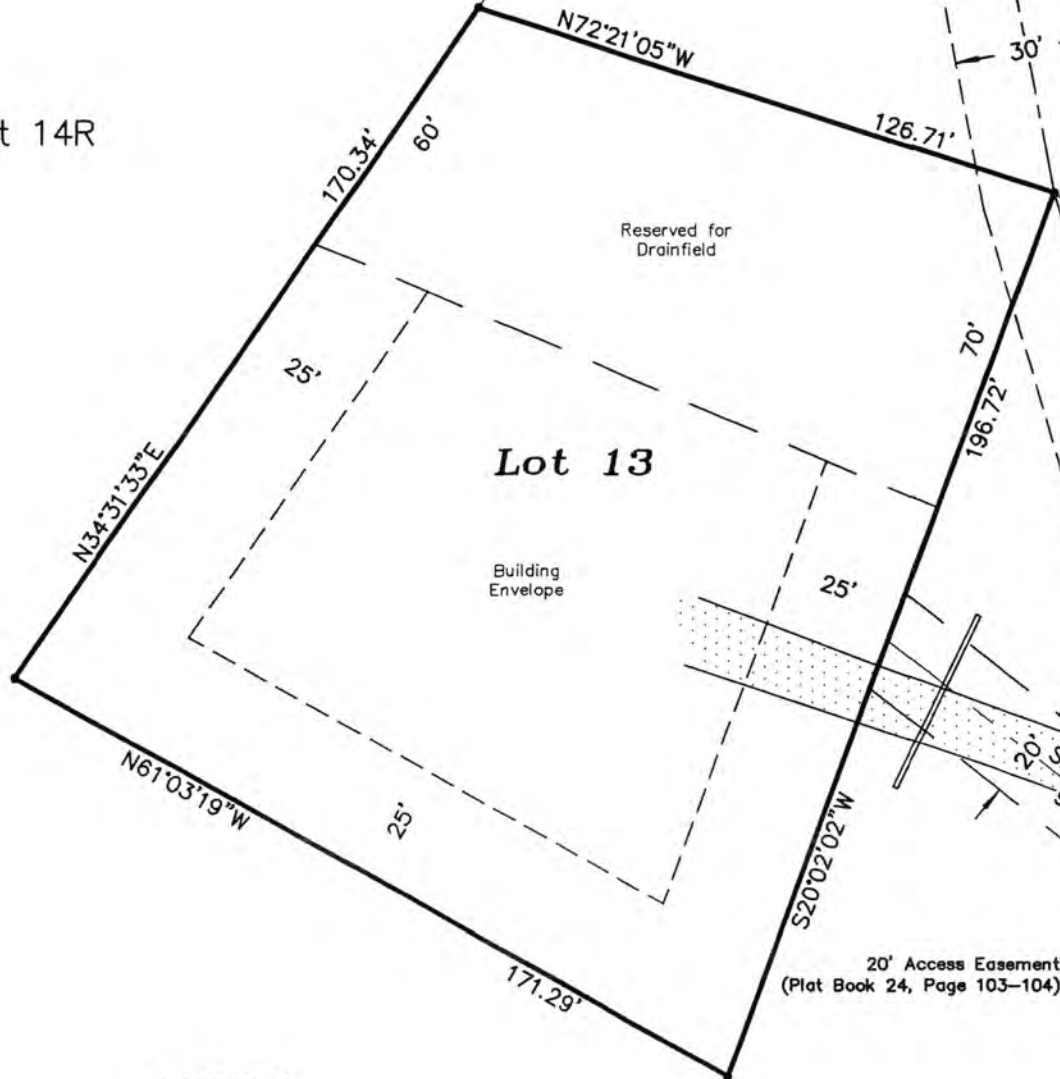


February 19, 2014  
Basis of Bearings  
Plat of Kepp Heights Subdivision  
Recorded in plat book 24, Pages 103-104.

Fisk Land Surveying & Consulting, Inc.  
1022 Main Street (P.O. Box 8154)  
Rapid City, South Dakota 57709  
(605) 348-1538  
(605) 341-1112 (fx)

Boundary Survey  
Lot 13, Kepp Heights  
Subdivision No. 3  
Pennington County, South Dakota

Surveyed by:	ML/CD
Date:	2/19/14
Drawn by:	CDD
Checked by:	JF
Revisions:	04/24/14
Boundary Survey:	1 of 1
Project No.:	14-02-07



**LEGEND**

- ⊙ = Sanitary Sewer Manhole (Unless noted)
- ⊗ = Water Valve
- ⊠ = Electric Box
- ⊡ = Telephone Box
- E— = Underground Electric
- T— = Underground Telephone
- SS— = Sanitary Sewer Line
- W— = Water Main
- G— = Natural Gas Line
- = Found Survey Monument LS1771

Utility and Minor Drainage Easements: 8' on the interior side of all side and rear lot lines

RECEIVED

APR 25 2014

RAPID CITY COMMUNITY PLANNING & DEVELOPMENT SERVICES

Grand Vista Court North

