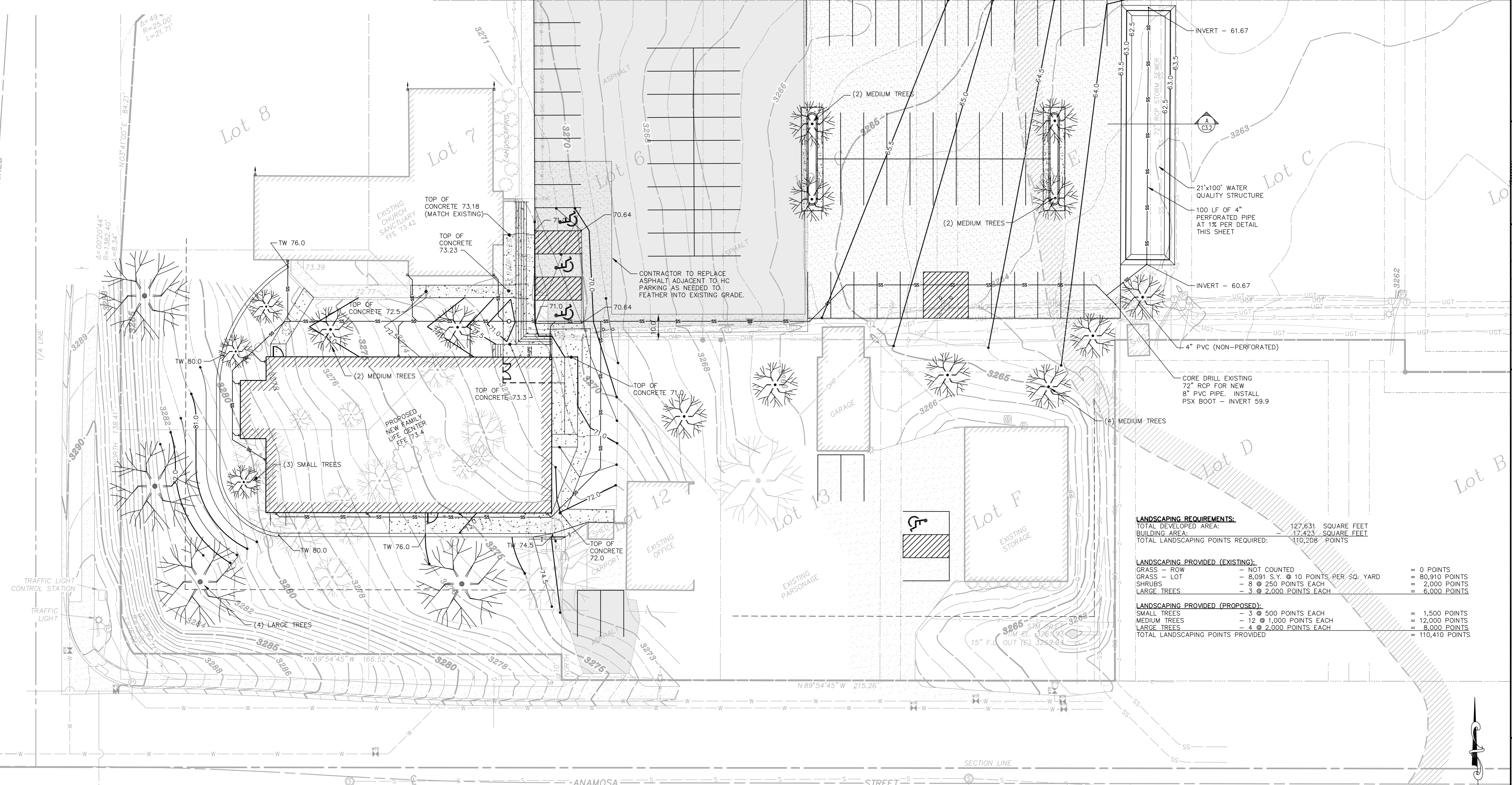


WOVEN GEOTEXTILE FABRIC MEETING:
 ASTM D475-AOS US STD. SIEVE #50
 TO #70 ASTM D4633 MIN. TRAPEZOIDAL
 TEAR STRENGTH 100x60 LBS, MIN.
 COE SPECIFIED OPEN AREA OF 4%

4" PERFORATED PIPE IN 9" STANDARD
 SPECIFICATION, SECTION 116:
 TYPE 3-AGGREGATE FOR
 ASPHALT SURFACE TREATMENT

PLANTING MIX:
 2/3 SAND (SEE STANDARD SPECIFICATION,
 SECTION 105: FINE AGGREGATE FOR USE
 IN PORTLAND CEMENT CONCRETE) AND
 1/3 PEAT MIX

(A) TRAPEZOIDAL WATER QUALITY STRUCTURE
 SCALE: NONE



SAN MH #2 - DROP MANHOLE
 RIM EL. 3264.56
 F.L. IN (W) 3254.76
 F.L. IN (W-dry) 3257.18
 F.L. OUT (E) 3254.70

INVERT - 61.67

INVERT - 60.67

INVERT - 59.9

LANDSCAPING REQUIREMENTS:

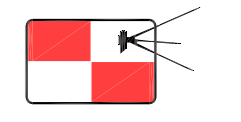
TOTAL DEVELOPED AREA:	127,631	SQUARE FEET
BUILDING AREA:	17,423	SQUARE FEET
TOTAL LANDSCAPING POINTS REQUIRED:	110,208	POINTS

LANDSCAPING PROVIDED (EXISTING):

GRASS - ROW	- NOT COUNTED	= 0 POINTS
GRASS - LOT	- 8,091 S.Y. @ 10 POINTS PER SQ. YARD	= 80,910 POINTS
SHRUBS	- 8 @ 250 POINTS EACH	= 2,000 POINTS
LARGE TREES	- 3 @ 2,000 POINTS EACH	= 6,000 POINTS

LANDSCAPING PROVIDED (PROPOSED):

SMALL TREES	- 3 @ 500 POINTS EACH	= 1,500 POINTS
MEDIUM TREES	- 12 @ 1,000 POINTS EACH	= 12,000 POINTS
LARGE TREES	- 4 @ 2,000 POINTS EACH	= 8,000 POINTS
TOTAL LANDSCAPING POINTS PROVIDED		= 110,410 POINTS



ADVANCED ENGINEERING & SURVEYING, INC.
 3421 WEST MAIN STREET
 RAPID CITY, SOUTH DAKOTA 57702
 PHONE: 605-718-8825 FAX: 605-718-8837
 EMAIL: advanceng@usbsur.com

Designed By: RB
 Drawn By: GH
 Design Date: 4/23/14
 Job No: AES:14-005
 Surveyed By: D.C. SCOTT
 Survey Date: 4/2014
 Revisions: 5/9/14 CITY COMMENTS

**HE SAPA NEW LIFE
 FAMILY LIFE CENTER**

Sheet Title:
**GRADING
 AND LANDSCAPING
 PLAN**

