

NOT FOR CONSTRUCTION

DESIGN 1

ROBERT J DAVIS, AIA
ARCHITECT
8973 VALLEY VIEW RD.
EDEN PRAIRIE, MN 55344
(952) 933-9299

VERIZON WIRELESS

10801 BUSH LAKE ROAD
BLOOMINGTON, MN 55438
(612) 720-0000

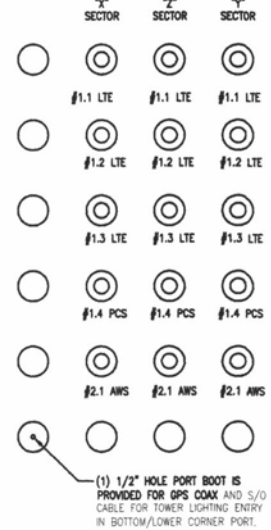
PROJECT
20120821521

RCYC
RUSHMORE
CROSSING

DISTRIBUTION LANE
RAPID CITY, SD

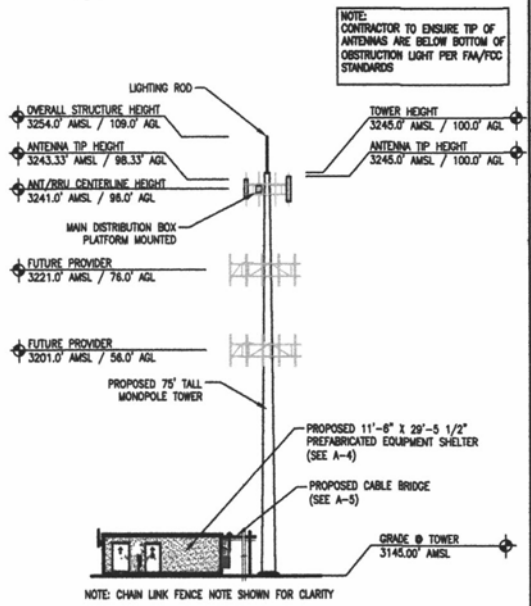
SHEET CONTENTS:
TOWER ELEVATION
COAX & ANTENNA KEY
GPS DETAIL & ELEVATION
ANTENNA MOUNTING DETAIL
COAX ENTRY DETAIL

DRAWN BY: JWB
DATE: 09-06-13
CHECKED BY: CD 11-13-13
REV.A 11-19-13
REV.B 12-16-13



(1) 1/2" HOLE PORT BOOT IS PROVIDED FOR GPS COAX AND S/D CABLE FOR TOWER LIGHTING ENTRY IN BOTTOM/LOWER CORNER PORT.

2 COAX ENTRY DETAIL (VIEW FROM INSIDE)
SCALE: NONE



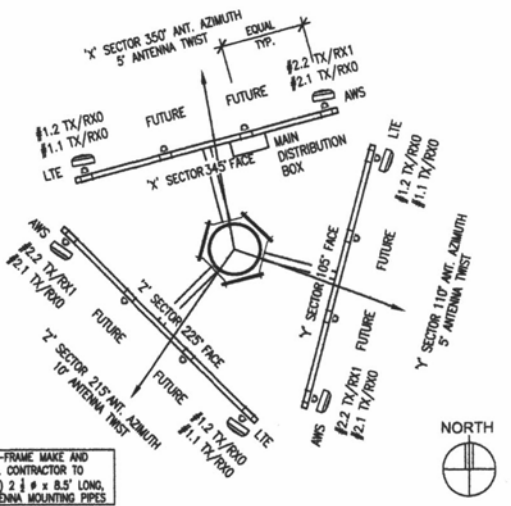
1 WEST ELEVATION
SCALE: 1" = 30'

ANTENNA KEY										COAX KEY								
AZIMUTH	POSITION	FUNCTION	QTY	MANUFACTURER	MODEL	MOO TYPE	ANTENNA LENGTH	ANTENNA TIP	ANTENNA CENTER	ELEC DOWNTILT	DT BRACKET	QTY	COAX TYPE	MANUFACTURER	MODEL	DIELECTRIC	DIAMETER (INCH)	RUN (FEET)
350	1.1	TX/RX1	1	COMMSCOPE	SBM4-106555C	LTE 700	98.42"	100.0'	96.0'	4'	Y	1	MAIN	ANDREW	AA7-50	FOAM	1-5/8"	120'
350	1.2	TX/RX0	1	COMMSCOPE	2ND PORT	LTE 700						1	MAIN	ANDREW	AA7-50	FOAM	1-5/8"	120'
350	2.1	TX/RX1	1	ERICSSON	AIR-32	AWS-B&E	56.00"	98.33'	52.0'	4'	Y	1	MAIN	ANDREW	AA7-50	FOAM	1-5/8"	120'
350	2.2	TX/RX0	1	ERICSSON	2ND PORT	AWS-B&E						1	MAIN	ANDREW	AA7-50	FOAM	1-5/8"	120'
110	1.1	TX/RX1	1	COMMSCOPE	SBM4-106555C	LTE 700	98.42"	100.0'	96.0'	4'	Y	1	MAIN	ANDREW	AA7-50	FOAM	1-5/8"	120'
100	1.2	TX/RX0	1	COMMSCOPE	2ND PORT	LTE 700						1	MAIN	ANDREW	AA7-50	FOAM	1-5/8"	120'
110	1.1	TX/RX1	1	ERICSSON	AIR-32	AWS-B&E	56.00"	98.33'	52.0'	4'	Y	1	MAIN	ANDREW	AA7-50	FOAM	1-5/8"	120'
110	2.1	TX/RX1	1	ERICSSON	2ND PORT	AWS-B&E						1	MAIN	ANDREW	AA7-50	FOAM	1-5/8"	120'
110	2.2	TX/RX0	1	ERICSSON	2ND PORT	AWS-B&E						1	MAIN	ANDREW	AA7-50	FOAM	1-5/8"	120'
215	1.1	TX/RX1	1	COMMSCOPE	SBM4-106555C	LTE 700	98.42"	100.0'	96.0'	4'	Y	1	MAIN	ANDREW	AA7-50	FOAM	1-5/8"	120'
215	1.2	TX/RX0	1	COMMSCOPE	2ND PORT	LTE 700						1	MAIN	ANDREW	AA7-50	FOAM	1-5/8"	120'
215	2.1	TX/RX1	1	ERICSSON	AIR-32	AWS-B&E	56.00"	98.33'	52.0'	4'	Y	1	MAIN	ANDREW	AA7-50	FOAM	1-5/8"	120'
215	2.2	TX/RX0	1	ERICSSON	2ND PORT	AWS-B&E						1	MAIN	ANDREW	AA7-50	FOAM	1-5/8"	120'
			2	COMMSCOPE	Rcx-3315-PF-48	DISTRIBUTION BOX (1) EQUIPMENT ROOM (1) AT PLATFORM												
			1	COMMSCOPE	HFT1206-24526-120'	6RRU CABLE (FROM EQUIP. ROOM TO 'X' SECTOR)												
			1	COMMSCOPE	HFT406-24525-120'	2RRU CABLE ('Y' SECTOR)												
			1	COMMSCOPE	HFT406-24525-120'	2RRU CABLE ('Z' SECTOR)												
			3	COMMSCOPE	RCMDC-1064-PF-48	E15509P49 TWIN DUPLEXED TMA (PLATFORM)												

3 COAX KEY
SCALE: NONE

NOTE:
1.) TOWER TO BE ERRECTED AND INSTALLED IN ACCORDANCE WITH TOWER MANUFACTURER'S DRAWINGS NOT INCLUDED WITH THIS PACKAGE. DISCREPANCIES BETWEEN TOWER DRAWINGS AND ARCHITECTURAL DRAWINGS TO BE REPORTED TO VERIZON WIRELESS AND THE ARCHITECT IMMEDIATELY.
2.) TOWER FOUNDATION, SHELTER FOUNDATION AND THE ACCESS DRIVE TO BE EXCAVATED AND CONSTRUCTED IN ACCORDANCE WITH RECOMMENDATIONS AND SPECIFICATIONS OF THE GEOTECHNICAL REPORT WHICH IS NOT INCLUDED IN THIS PACKAGE. DISCREPANCIES BETWEEN THE REPORT AND THE OTHER DOCUMENTS TO BE IMMEDIATELY REPORTED TO VERIZON WIRELESS AND THE ARCHITECT.

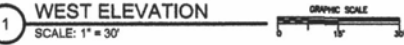
4 ANTENNA KEY
SCALE: NONE

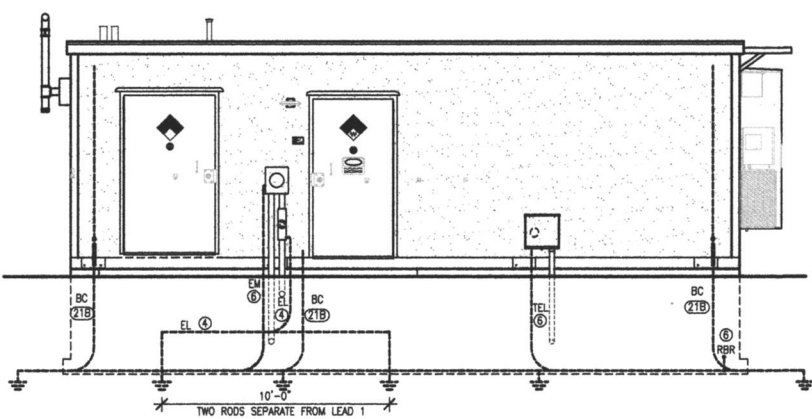


5 ANTENNA MOUNTING DETAIL
SCALE: 3/16" = 1'-0"

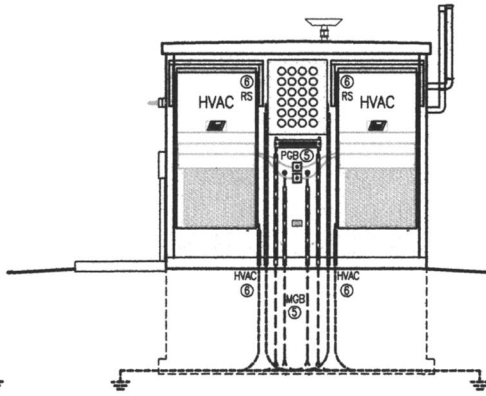
6 AWS/LTE ONE LINE DIAGRAM
SCALE: NONE

NOTE:
CABLE HANGERS: COMMSCOPE 42396A-1
HOIST GRIPS: COMMSCOPE 19256B
NOTE:
OVERALL LENGTH OF POWER CABLES NOT TO EXCEED 367' FROM POWER SUPPLY TO REMOTE RADIO UNIT

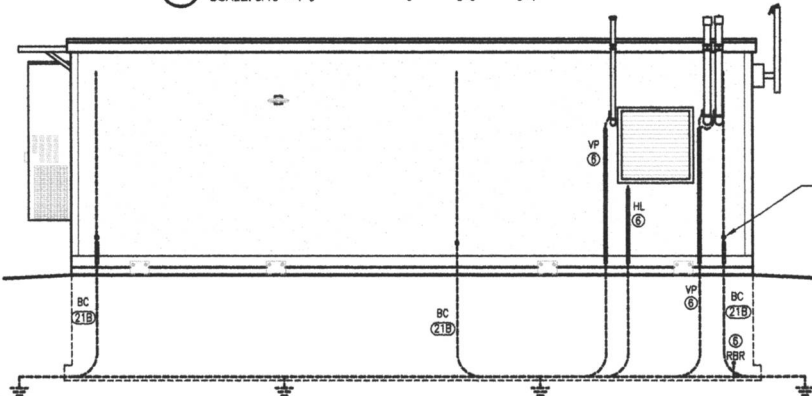




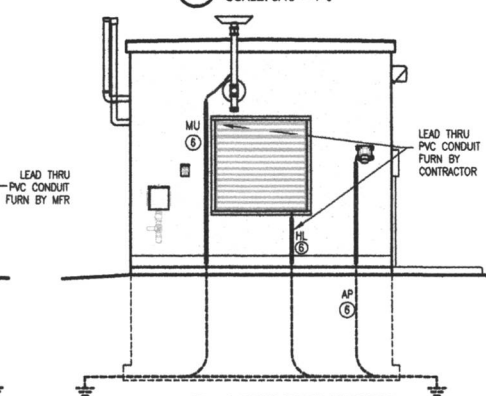
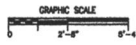
1 FRONT ELEVATION
SCALE: 3/16" = 1'-0"



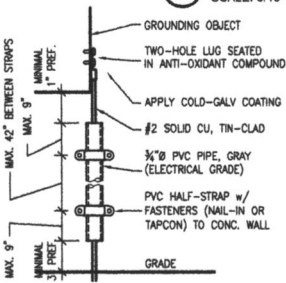
2 RIGHT ELEVATION
SCALE: 3/16" = 1'-0"



3 REAR ELEVATION
SCALE: 3/16" = 1'-0"

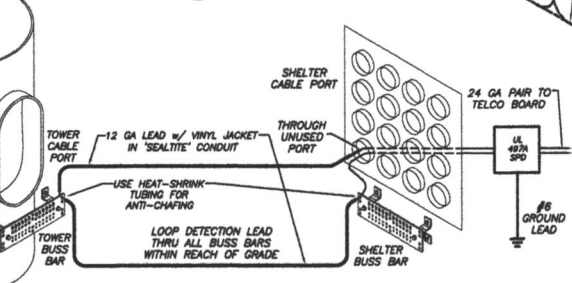


4 LEFT ELEVATION
SCALE: 3/16" = 1'-0"

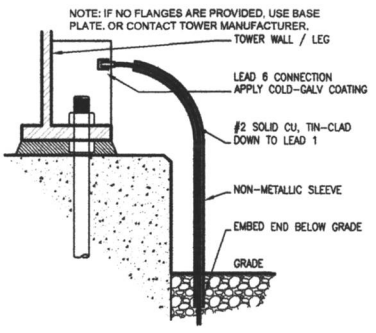


5 CONDUIT DETAIL
SCALE: NONE

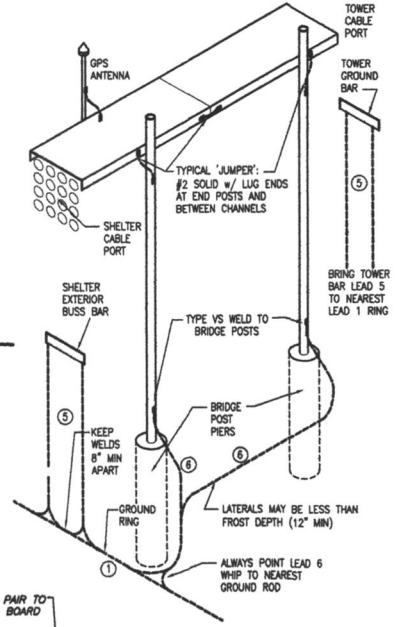
6 NOT USED
SCALE: NONE



7 ANTI-THEFT MEASURE
SCALE: NONE



9 TYPICAL TOWER GROUNDING
SCALE: NONE



8 TYPICAL CABLE BRIDGE
SCALE: NONE