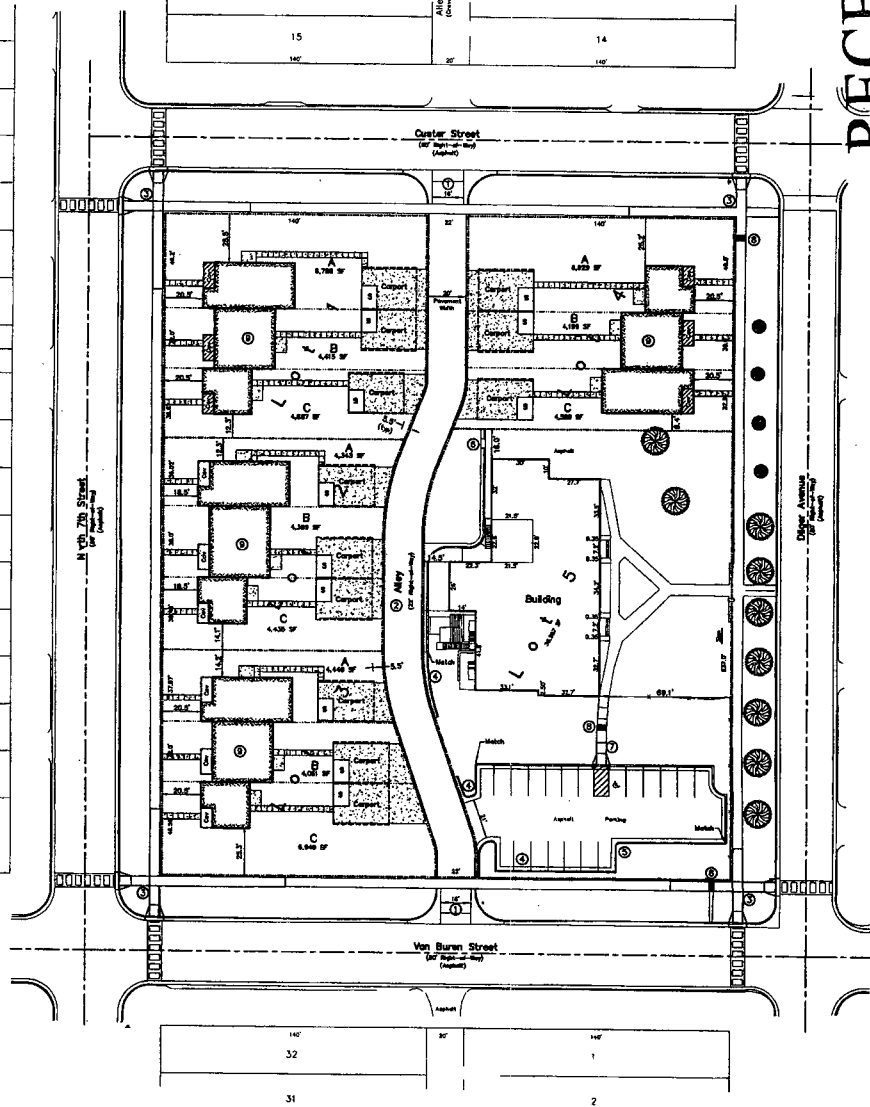


HALEYS ADDITION

29  
30  
31  
32  
33  
34  
35  
36  
37  
38  
39  
40  
41  
42  
43  
44  
45  
46



RECEIVED

MAR 19 2014

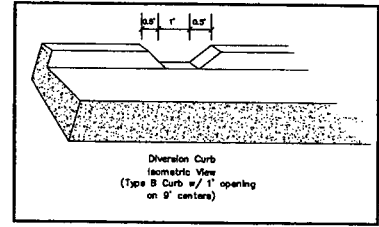
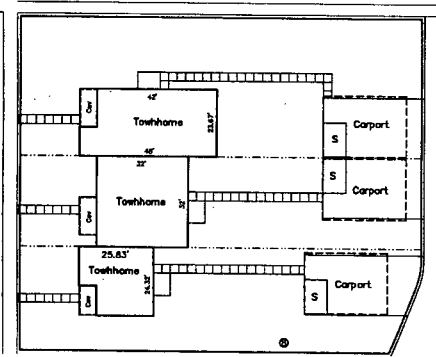
Rapid City Community & Development Services



**CONSTRUCTION NOTES**

- ① Construct Reinforced Concrete Approach 16' PCC (15' Radius)
  - ② Construct AC Alley (20' Wide) (See Parking Recommendation)
  - ③ Construct ADA Compliant Sidewalk Ramps (See ADA Details Sheet)
  - ④ Construct Type B C&G (amend existing asphalt parking - match as shown)
  - ⑤ Construct Diversion Curb (See Detail)
  - ⑥ Remove 6 LF back of curb (stormwater diversion)
  - ⑦ Construct HG Compliant Access (SW) and Ramp (match exist curb cut)
  - ⑧ Construct SW Drains (City 3) (see curb opening detail - SH. 12)
  - ⑨ Typical Units to be constructed and plotted as development progress
- NOTE: Buildings to be 10'-Plan units with 10'-Front and 10'-Side/Cornered Street/Alley and setbacks (or greater) for consistency.
- See Utilities Plan (Sheet 7) for Sewer, Water and gas/teleco/electric distribution

Typical Unit Details  
1"=20'



Fisk Land Surveying & Consulting Engineers, Inc.  
1022 Main Street - P.O. Box 8154  
Rapid City, SD 57702  
(605) 348-1330 (fax) (605) 348-7072 (cell)  
info@fisklandsurvey.com



The information herein is preparation material, and specific to the date, client and purpose as stated. No warranty or guarantee is expressed or implied to any party for any other purpose or for any time except as stated.

Proposed Site Plan  
Black Hills Area Habitat for Humanity  
Garfield Green  
Block 76, North Rapid Addition #2  
Rapid City, Pennington County, South Dakota

Surveyed by: ML/ZD  
Date: 3/22/13  
Drawn by: RWF  
Date: 4/24/13  
Checked by: WF

Revisions  
11-14-13 - Concept  
12-11-13 - Layout  
13-28-13 - Details  
2-8-14 - Alley  
3-17-14 - SW Drain

Project No.  
13-03-07

Proposed Site Plan

