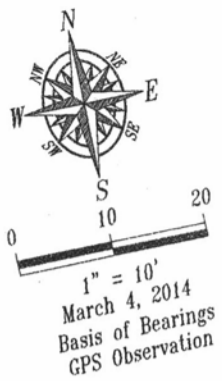
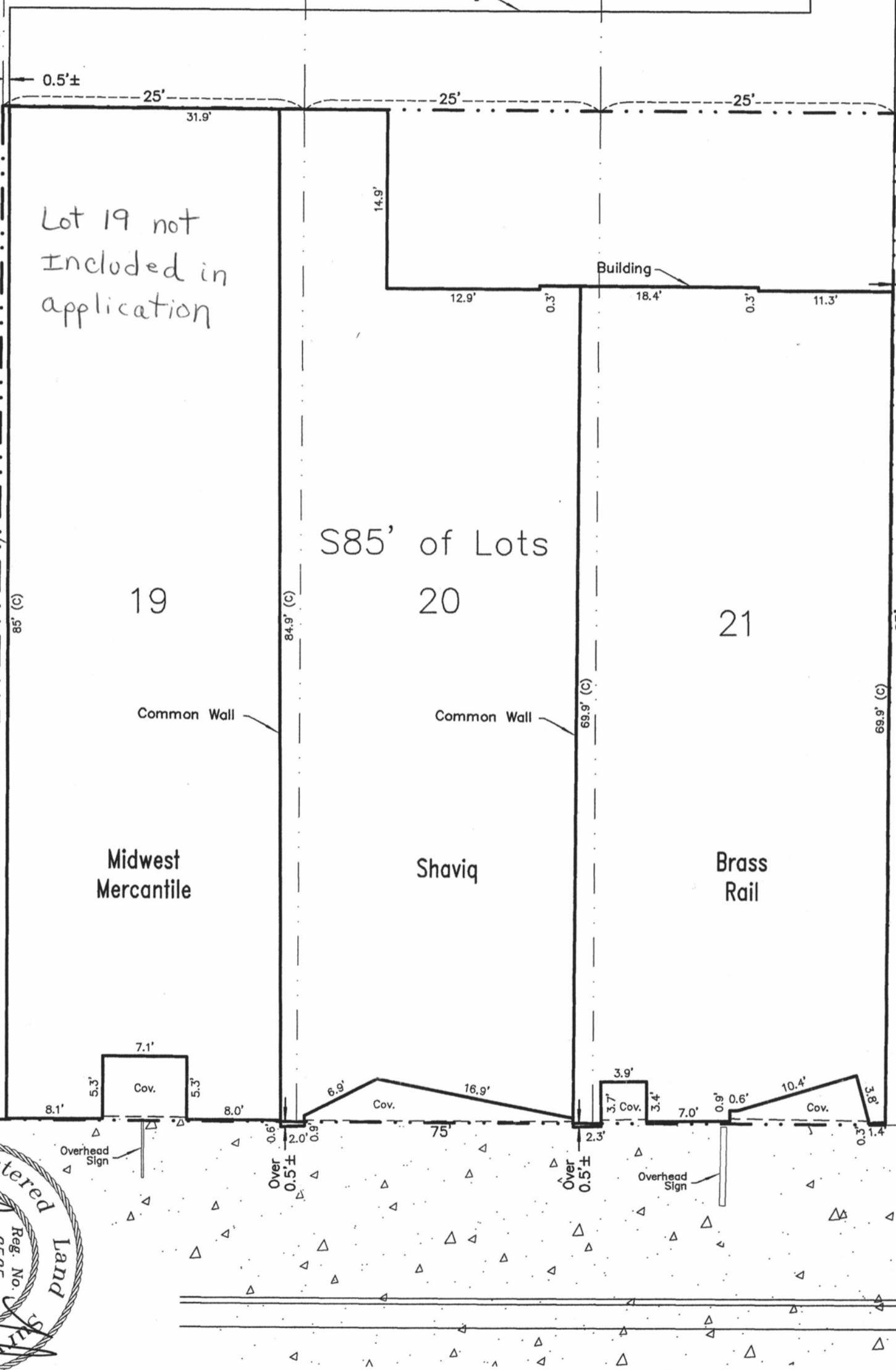


14UR007



RECEIVED  
MAR 14 2014  
Rapid City Community Planning  
& Development Services

The location of the Common Walls are assumed for the purposes of this exhibit. The actual location of the Common Walls may vary from that shown. Minor detail may not be shown due to snow cover at the time of survey



Lot 19 not included in application

S85' of Lots 19, 20, 21

Midwest Mercantile

Shaviq

Brass Rail



Site Plan

The South 85' of Lots 19, 20, and 21  
Block 84, Original Town of Rapid City  
Pennington County, South Dakota

Fisk Land Surveying & Consulting Engineers, Inc.

1022 Main Street (P.O. Box 8154)  
Rapid City, South Dakota 57709  
(605) 348-1538  
(605) 341-1112 (fx)

Project No.	14-03-01
Site Plan	2 of 2
Revisions	
Checked by:	JF
Drawn by:	CDD
Date	3/04/14
Surveyed by:	ML/CD