

MURPHY RANCH ESTATES SUBDIVISION

INCLUDING:

- LOTS 2 THRU 7 OF BLOCK 1
- LOTS 14 THRU 27 OF BLOCK 3
- LOTS 1 THRU 4 OF BLOCK 9
- LOT 6 OF BLOCK 11
- LOTS 1 THRU 11 OF BLOCK 12
- LOT 1 OF BLOCK 13

FORMERLY:

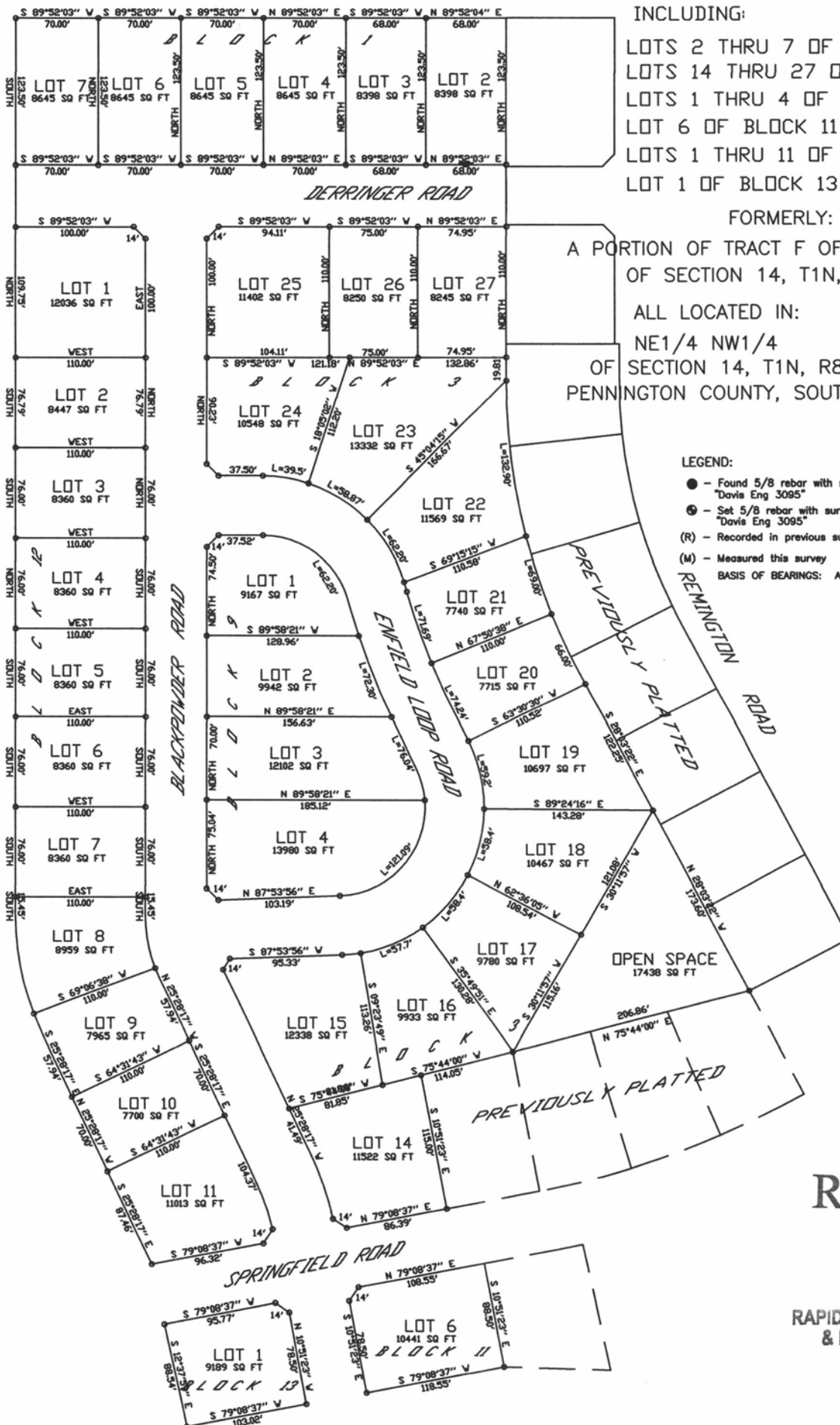
A PORTION OF TRACT F OF THE NW1/4 OF SECTION 14, T1N, R8E, BHM.

ALL LOCATED IN:

NE1/4 NW1/4 OF SECTION 14, T1N, R8E, BHM PENNINGTON COUNTY, SOUTH DAKOTA

LEGEND:

- - Found 5/8 rebar with survey cap marked "Davis Eng 3095"
 - ⊙ - Set 5/8 rebar with survey cap marked "Davis Eng 3095"
 - (R) - Recorded in previous survey
 - (M) - Measured this survey
- BASIS OF BEARINGS: As shown hereon



RECEIVED

FEB 27 2014

RAPID CITY COMMUNITY PLANNING & DEVELOPMENT SERVICES