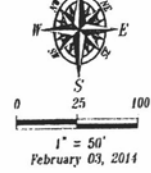


FEB 27 2014

Rapid City Community Planning
& Development Services

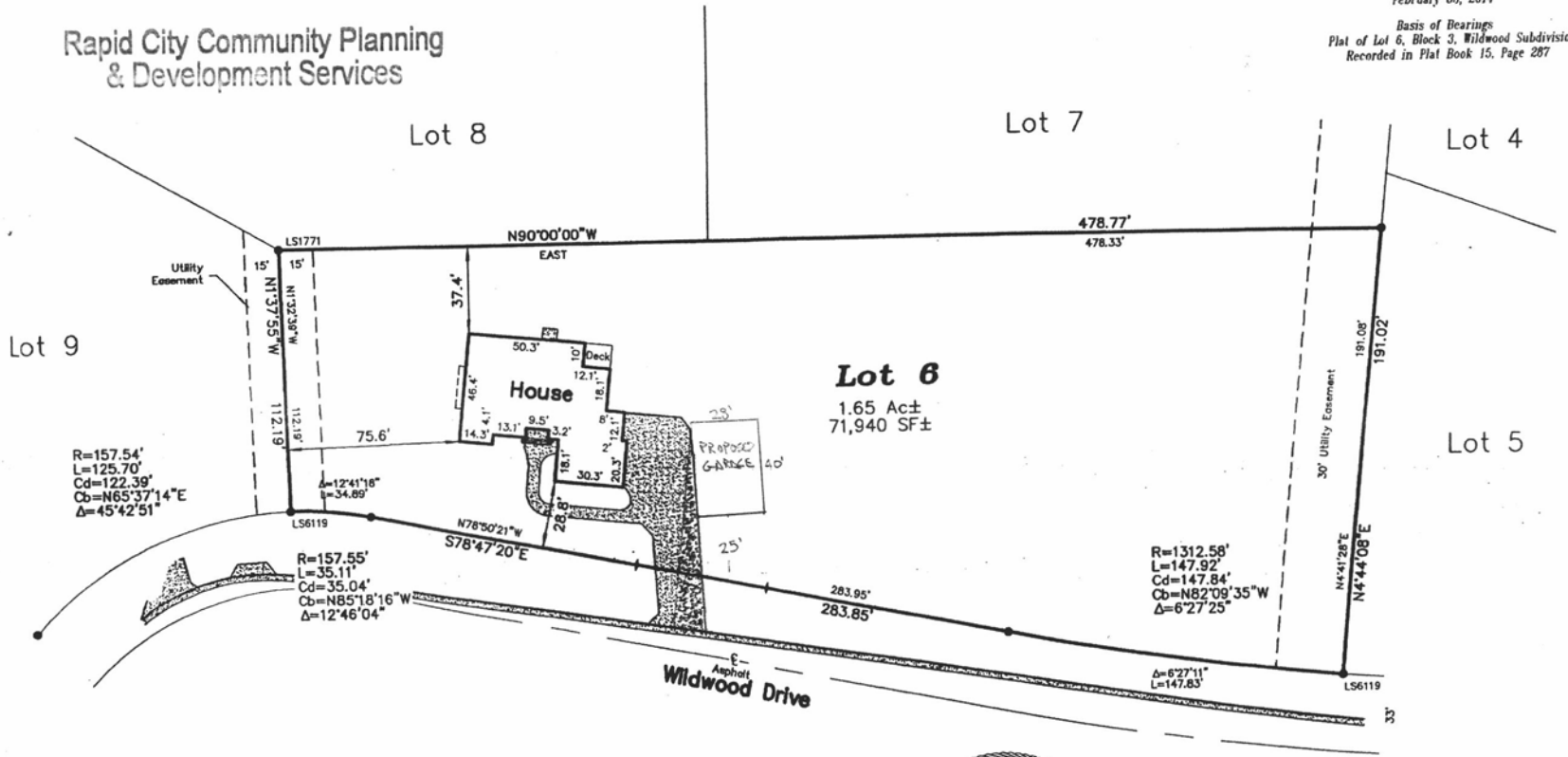
Minimum Building Setbacks
25' Front & Rear
8' Sides

Utility and Minor Drainage Easements
8' Side & Rear



Basis of Bearings
Plat of Lot 6, Block 3, Wildwood Subdivision
Recorded in Plat Book 15, Page 287

Fisk Land Surveying
& Consulting, Inc.
 1022 Main Street (P.O. Box 8154)
 Rapid (605) 346-1338
 (605) 341-1112 (fx)



LEGEND

- = Found 5/8" Rebar or Survey Monument as noted
 - N90°00'00"W 478.77' = Bearing/Distance as Measured
 - EAST 478.33' = Bearing/Distance as Recorded
- Minor detail may not be shown due to snow cover at the time of survey



Boundary Survey
 Lot 6, Block 3
 Wildwood Subdivision
 Rapid City, South Dakota

Surveyed by: CD/ML
Date 2/3/2014
Drawn by: CDD
Checked by: JF
Revisions
Boundary Survey
1 of 1
Project No. 14-C2-01