

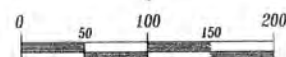
**Plat of Lots 1 through 5 of Block 76, North Rapid Addition #2
and Dedicated Right-of-Way**

located in (and formerly all of) Block 76, North Rapid Addition #2

Section 36, T2N, R7E, B.H.M.

Rapid City, Pennington County, South Dakota

Prepared by: Fisk Land Surveying
& Consulting Engineers, Inc.
P.O. Box 8154, Rapid City, SD 57709
605-348-1538
Project # 13-03-07



1" = 100'
April 5, 2013

Basis of Bearings
Grid North as
determined by GPS

All measurements shown are measured this survey
see previous plats for record information

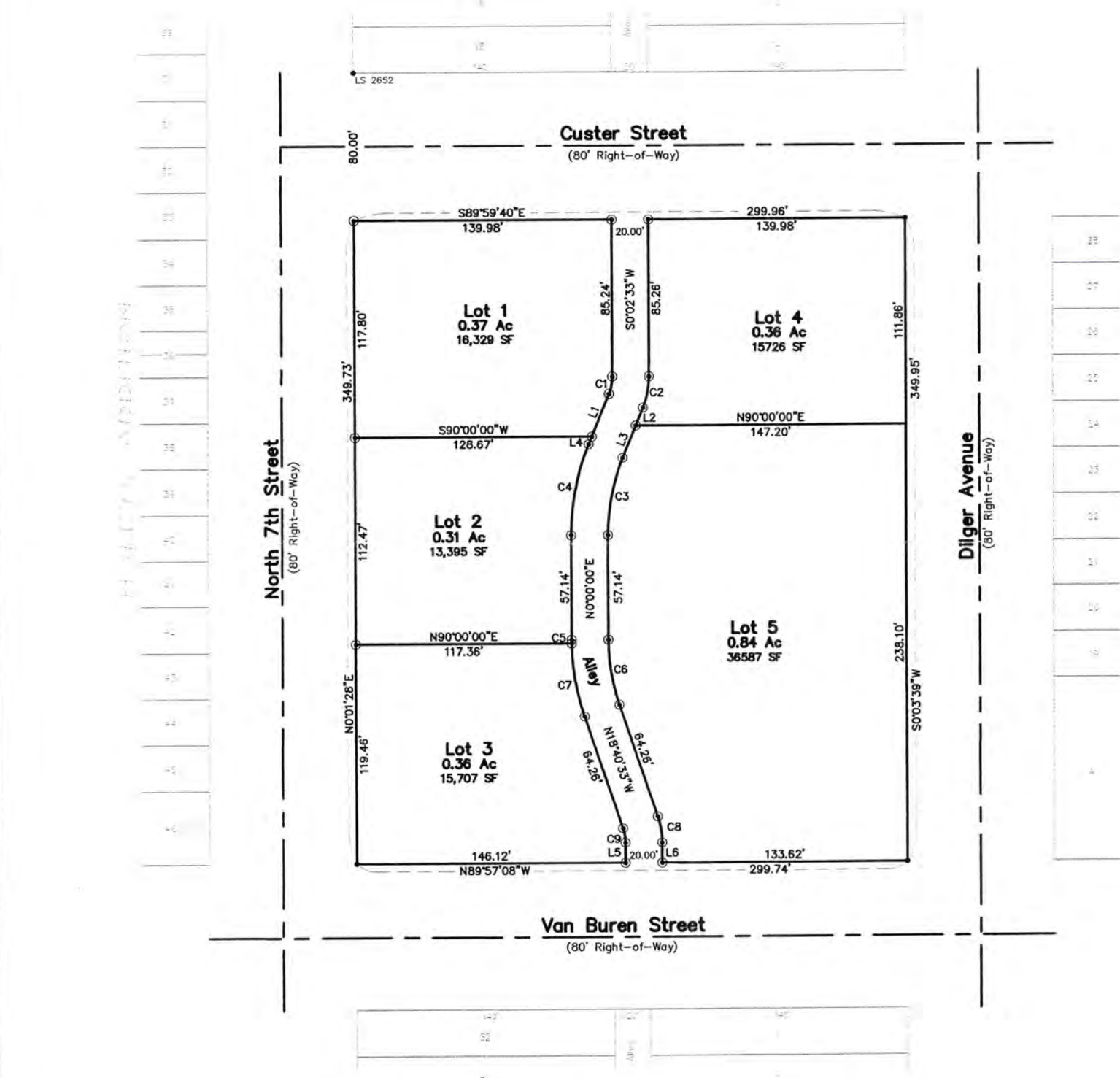
Utility & Minor Drainage Easements:
8' on the interior sides of all lot lines.

All major drainage easements shown hereon shall be kept free of all obstructions,
including but not limited to buildings, walls fences, hedges, trees and shrubs.
These easements grant to all public authorities the right to construct, operate,
maintain, inspect and repair such improvements and structures as it deems expedient
to facilitate drainage from any source.

PRELIMINARY

LEGEND

- = Found Survey Monument, #5 Rebar or as noted
- ⊙ = Found or Set Rebar with cap marked "RW FISK 6565"



NUM	DELTA	ARC	RADIUS	BEARING	DISTANCE
C1	22°10'15"	9.67'	25.00'	N11°07'41"E	9.61'
C2	22°10'15"	17.41'	45.00'	N11°07'41"E	17.30'
C3	22°12'48"	42.65'	110.00'	S11°06'24"W	42.38'
C4	22°12'48"	50.40'	130.00'	S11°06'24"W	50.09'
C5	0°51'28"	1.95'	130.00'	S0°25'44"E	1.95'
C6	18°40'32"	35.85'	110.00'	S9°20'16"E	35.70'
C7	17°49'04"	40.43'	130.00'	S9°46'01"E	40.26'
C8	18°43'06"	14.70'	45.00'	N9°19'00"W	14.64'
C9	18°43'06"	8.17'	25.00'	N9°19'00"W	8.13'

NUM	BEARING	DISTANCE
L1	N22°12'48"E	24.97'
L2	N22°12'48"E	10.41'
L3	N22°12'48"E	19.14'
L4	N22°12'48"E	4.58'
L5	S0°02'33"W	11.00'
L6	S0°02'33"W	11.00'