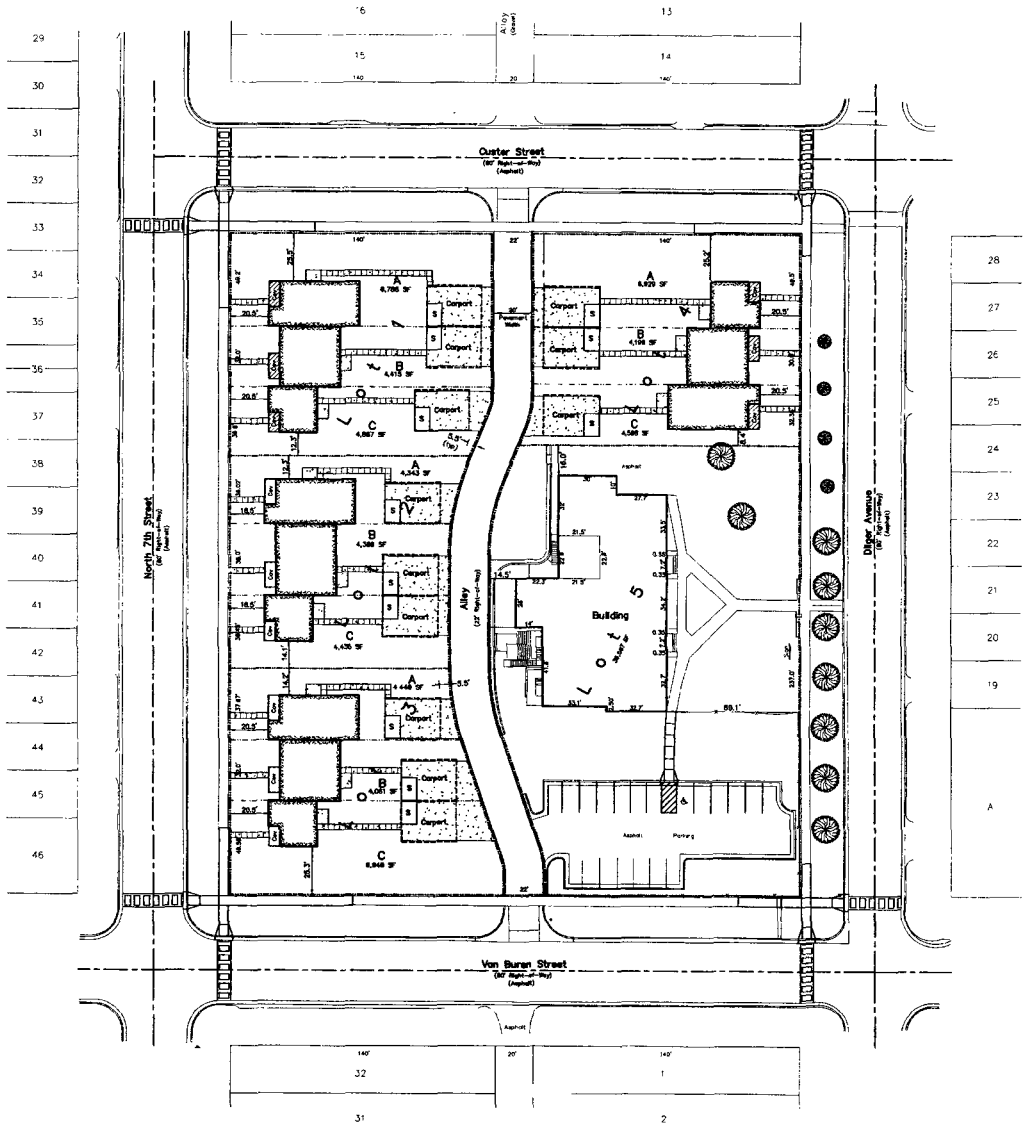


FEB 06 2014

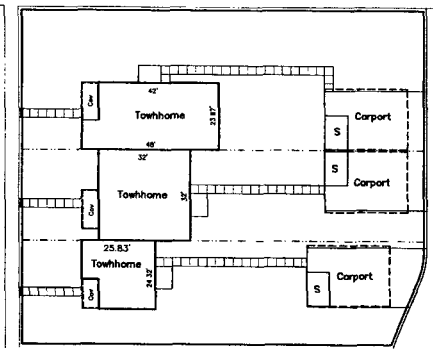
**RAPID CITY COMMUNITY PLANNING  
& DEVELOPMENT SERVICES**

PHASE I - ADDITION



**PRELIMINARY**

Typical Unit  
Details  
1"=20'



ONE CALL  
BEFORE DIGGING  
1-800-751-7474

**Fisk Land Surveying &  
Consulting Engineers, Inc.**  
1022 Main Street - P.O. Box 8154  
Rapid City, SD 57702  
(605) 346-1538 (ph) (605) 341-1112 (fx)  
fisk@fiskconsulting.com

The information herein is preparatory material and specific to the date, sheet and purpose as stated. No warranty or guarantee is expressed or implied in any part, for any other purpose of any time except as stated.

Proposed Site Plan  
Black Hills Area Habitat for Humanity  
Garfield Green  
Block 76, North Rapid Addition #2  
Rapid City, Pennington County, South Dakota

Surveyed by: ML/CD  
Date: 3/22/13  
Drawn by: RWF  
Date: 4/24/13  
Checked by: WF  
Revisions  
11-14-13 - Concept  
12-16-13 - Layout  
12-26-13 - Detail  
2-4-14 - Rwy

Project No  
13-03-07

Proposed  
Site Plan