

# RECEIVED

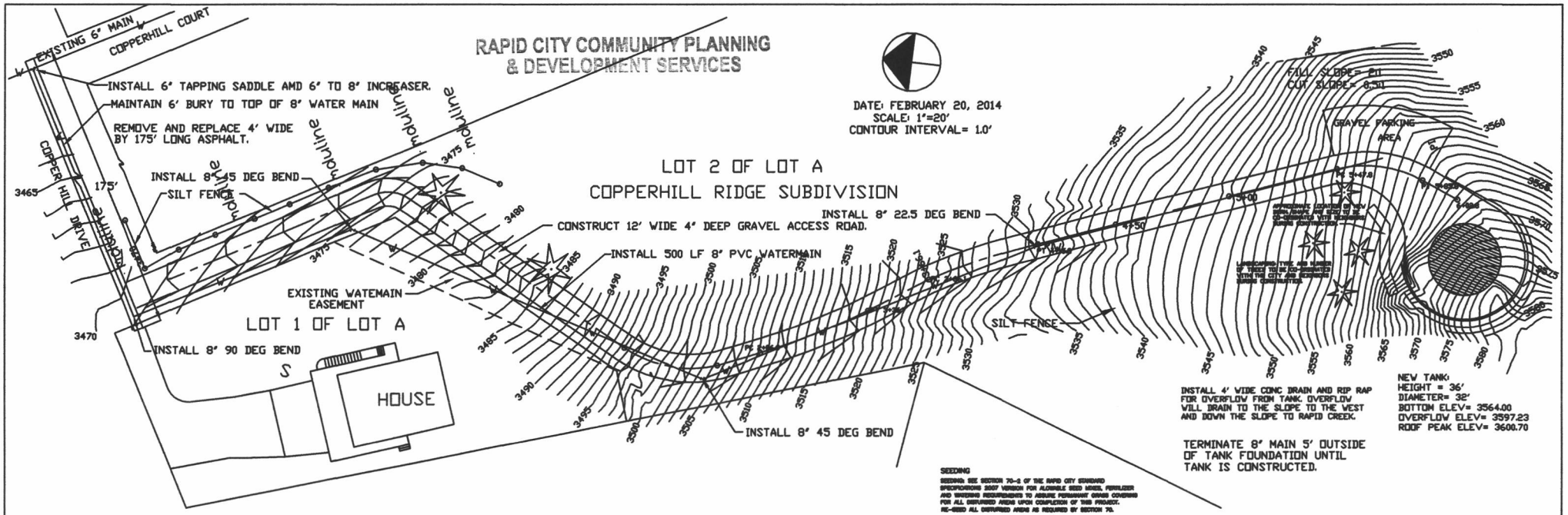
FEB 20 2014

## RAPID CITY COMMUNITY PLANNING & DEVELOPMENT SERVICES



DATE: FEBRUARY 20, 2014  
SCALE: 1"=20'  
CONTOUR INTERVAL = 1.0'

### LOT 2 OF LOT A COPPERHILL RIDGE SUBDIVISION



SEEKING  
SEEKING SEE SECTION 70-4 OF THE RAPID CITY CHARTER  
SPECIFYING SOFT VEGETATION FOR ALLOGS, BIRD NESTS, FOWLERS  
AND OTHERS RECOMMEND TO AVOID FOREMAN GRASS COVERING  
FOR ALL CURVED AREAS UPON COMPLETION OF THIS PROJECT.  
RE-SEED ALL CURVED AREAS AS REQUIRED BY SECTION 70.

