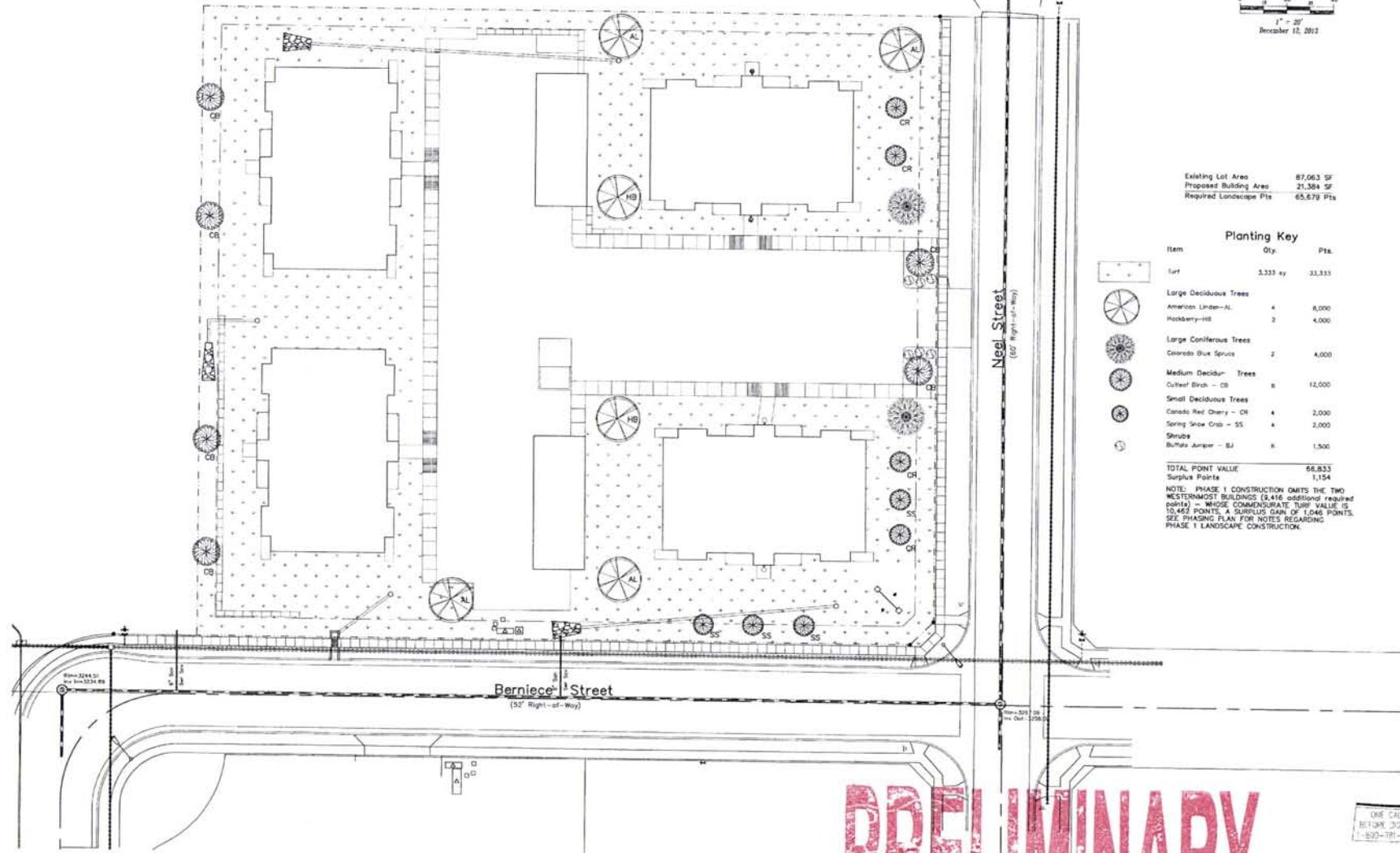


DEC 13 2013

RAPID CITY COMMUNITY PLANNING & DEVELOPMENT SERVICES



Existing Lot Area 87,063 SF
 Proposed Building Area 21,304 SF
 Required Landscape Pts 65,679 Pts

Planting Key

Item	Qty.	Pts.
Turf	3,333 sq	33,333
Large Deciduous Trees		
American Linden - AL	4	8,000
Hockberry-Hill	2	4,000
Large Coniferous Trees		
Colorado Blue Spruce	2	4,000
Medium Deciduous Trees		
Cutleaf Birch - CB	8	12,000
Small Deciduous Trees		
Canada Red Cherry - CH	4	2,000
Spring Snow Crab - SS	4	2,000
Shrubs		
Buffalo Juniper - BJ	8	1,500
TOTAL POINT VALUE		66,833
Surplus Points		1,154

NOTE: PHASE 1 CONSTRUCTION OMMITS THE TWO WESTERNMOST BUILDINGS (8 416 additional required points) ~ WHOSE COMMENSURATE TURF VALUE IS 10,462 POINTS. A SURPLUS GAIN OF 1,046 POINTS. SEE PHASING PLAN FOR NOTES REGARDING PHASE 1 LANDSCAPE CONSTRUCTION.

Fisk Land Surveying & Consulting Engineers, Inc.
 1022 Main Street, P.O. Box 8154
 Rapid City, SD 57709
 (605) 348-5356 (F) (605) 341-1112 (H)
 www.fisklandsurvey.com



The information herein is proprietary material, and specific to the date, time and purpose as stated. We warrant no guarantee is expressed or implied in any part, for any other purpose at any time except as stated.

Proposed Site Plan - Pilot Properties
 Lot 4, Block 1, Big Sky
 Business Park
 Rapid City, Pennington County, South Dakota

Surveyed by:	CD
Date:	10/23/13
Drawn by:	RHF
Date:	12/6/13
Checked by:	WF
Revisions:	
Project No:	13-10-02
Landscape Plan	

ONE CALL BEFORE DIGGING
 1-800-368-7474