

← ON STREET PARKING →

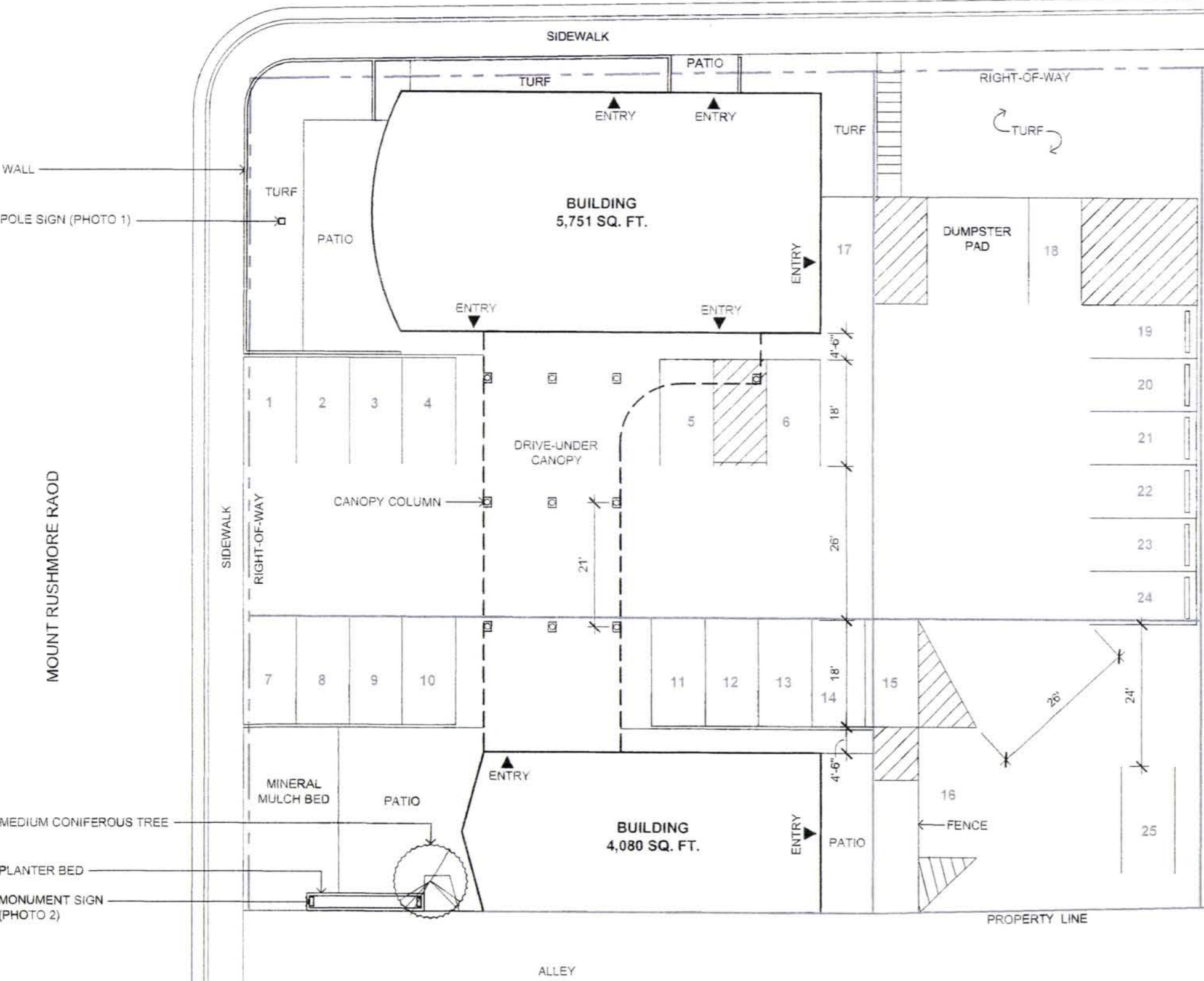


PHOTO 1: POLE SIGN



PHOTO 2: MONUMENT SIGN

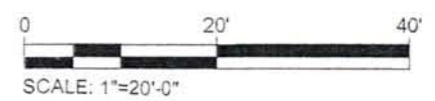
EXISTING LANDSCAPE POINTS			
ITEM	QUANTITY	POINT VALUE	TOTAL POINTS
CONIFEROUS TREE	1	2,000	2,000
GRASS (SY)	233	10	2,330
TOTAL			4,230

NOTE:
1. This plan was developed from aerial photography and field measurements.

RECEIVED

DEC 12 2013

RAPID CITY COMMUNITY PLANNING & DEVELOPMENT SERVICES



PRELIMINARY
NOT FOR
CONSTRUCTION

Designed By: MS/AB
Drawn By: AB
Print Date: DECEMBER 11, 2013
Internal Job No: 130523
Surveyed By: N/A
Survey Date: N/A

Revisions:

Project Title:

2202 MT. RUSHMORE RD.
RAPID CITY, SOUTH DAKOTA
CUP APPLICATION

Sheet Title:
PARKING LAYOUT