

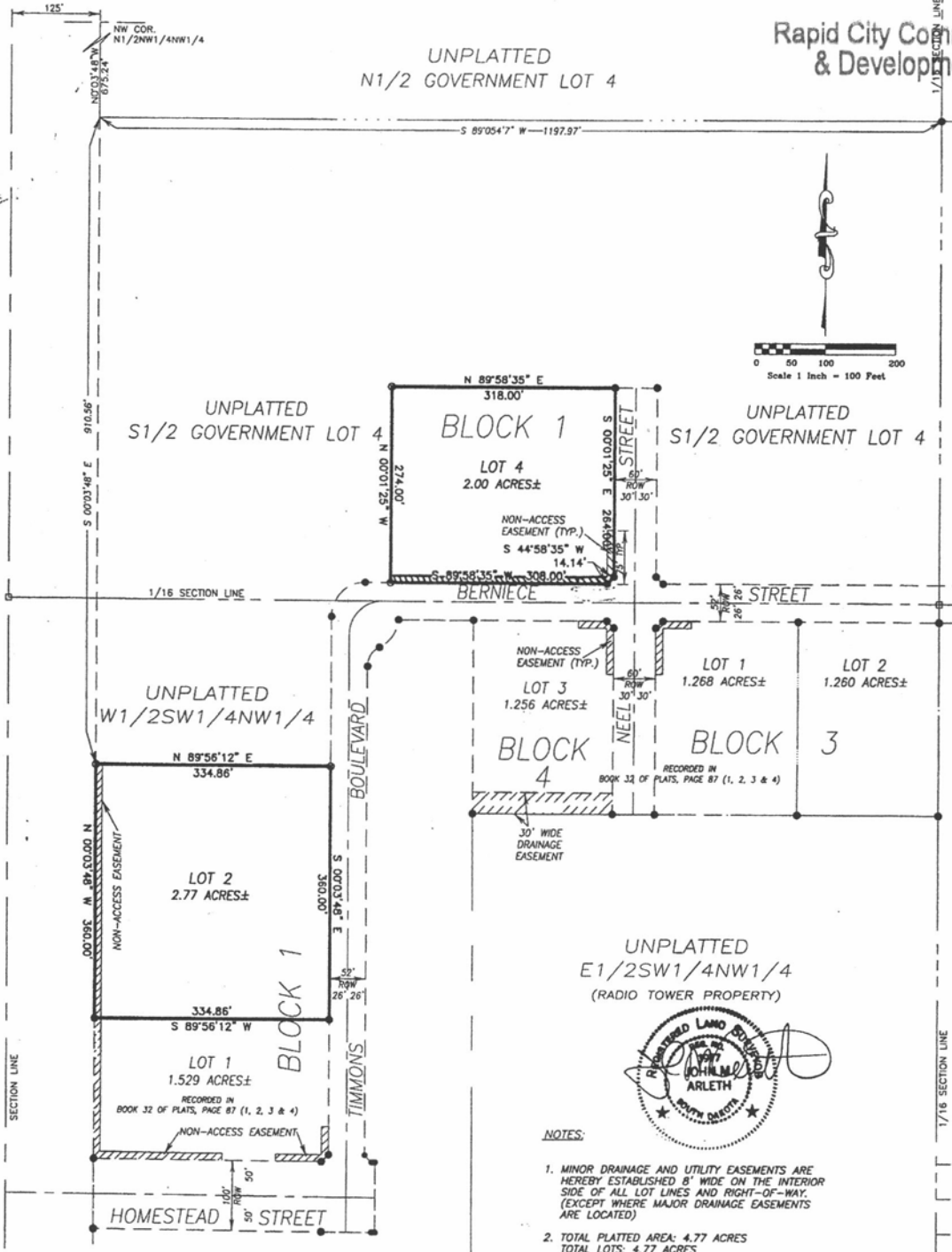
PLAT OF BIG SKY BUSINESS PARK

PAGE 1 OF 2
RECEIVED

LOT 2 AND LOT 4, BLOCK 1,
LOCATED IN THE W1/2SW1/4NW1/4 AND THE S1/2 GOVERNMENT LOT 4 OF
SECTION 3, T1N, R8E, B.H.M.,
RAPID CITY, PENNINGTON COUNTY, SOUTH DAKOTA

SEP 26 2013

Rapid City Community Planning
& Development Services



UNPLATTED
E1/2SW1/4NW1/4
(RADIO TOWER PROPERTY)



NOTES:

- MINOR DRAINAGE AND UTILITY EASEMENTS ARE HEREBY ESTABLISHED 8' WIDE ON THE INTERIOR SIDE OF ALL LOT LINES AND RIGHT-OF-WAY, (EXCEPT WHERE MAJOR DRAINAGE EASEMENTS ARE LOCATED)
- TOTAL PLATTED AREA: 4.77 ACRES
TOTAL LOTS: 4.77 ACRES
- ANY MAJOR DRAINAGE EASEMENT SHOWN HEREON SHALL BE KEPT FREE OF ALL OBSTRUCTIONS INCLUDING BUT NOT LIMITED TO BUILDINGS, WALLS, FENCES, HEDGES, TREES, AND SHRUBS. THESE EASEMENTS GRANT TO ALL PUBLIC AUTHORITIES THE RIGHT TO CONSTRUCT, OPERATE, MAINTAIN, INSPECT AND REPAIR SUCH IMPROVEMENTS AND STRUCTURES AS IT DEEMS EXPEDIENT TO FACILITATE DRAINAGE FROM ANY SOURCE.
- NON-ACCESS EASEMENTS ARE HEREBY ESTABLISHED ALONG THE FIRST FIFTY FEET OF CORNER LOTS OR AS INDICATED HEREON.

LEGEND:

- DENOTES SET 5/8" REBAR WITH SURVEY CAP MARKED "RLS 3977"
 - DENOTES FOUND 5/8" REBAR WITH SURVEY CAP MARKED "RLS 3977"
 - zzzz DENOTES NON-ACCESS EASEMENT
- BASIS OF BEARING: PER PREVIOUSLY RECORDED PLAT(S).