

FINAL Plat Certificate

**PLAT OF LOTS 17A AND 17B IN BLOCK 1 OF GEMSTONE SUBDIVISION
 (FORMERLY LOT 17 IN BLOCK 1 OF GEMSTONE SUBDIVISION)
 LOCATED IN GOVT. LOT 1, SECTION 19, T1N, R8E, B.H.M.
 RAPID CITY, PENNINGTON COUNTY, SOUTH DAKOTA**



Prepared by:
 Hanson Surveying & Mapping
 832 Horace Mann Drive
 Rapid City, SD 57701
 605-388-9652

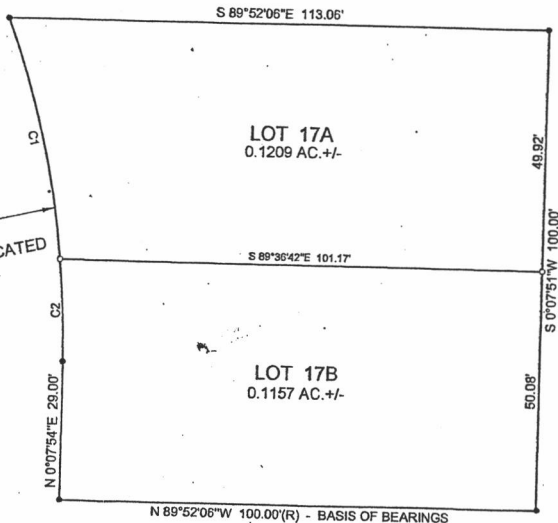
OCTOBER 1, 2013



LEGEND

- Found Survey Monument.
- Set 5/8" Rebar with Plastic Cap marked "Hanson #6251"

TOPAZ LANE
 49' R.O.W.
 PREVIOUSLY DEDICATED



Curve	Delta Angle	Radius	Arc	Tangent	Chord	Chord Bearing
1	14°40'51"	199.12	51.02	25.65	50.88	S 13°23'23"E
2	6°12'26"	199.11	21.57	10.60	21.56	S 2°57'57"E

RECEIVED

OCT 11 2013