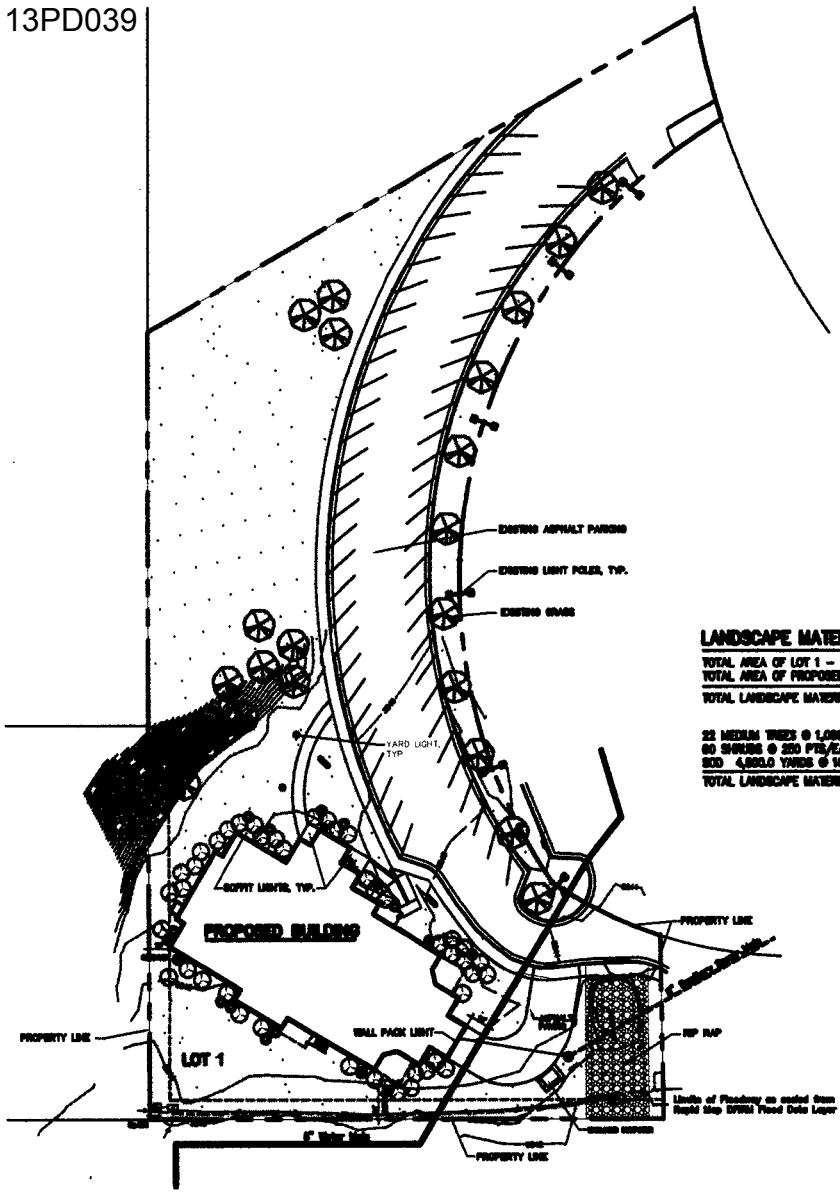


FOUNDERS PARK MIXED USE NO. 1
 RAPID CITY, SD.



LANDSCAPE MATERIAL POINTS:

TOTAL AREA OF LOT 1 - 2.2 ACRES - (SQ. FT.)	= 95,832.0
TOTAL AREA OF PROPOSED BUILDING COVERAGE	= 10,140.0
TOTAL LANDSCAPE MATERIAL POINTS REQUIRED	= 85,692.0

22 MEDIUM TREES @ 1,000 PTS/EA.	= 22,000.0
60 SHRUBS @ 250 PTS/EA.	= 15,000.0
800 4,000.0 YARDS @ 10 PTS/YD	= 8,000.0
TOTAL LANDSCAPE MATERIAL POINTS PROVIDED	= 45,000.0

PROPOSED LANDSCAPE PLAN AND LIGHTING LAYOUT

LOT 1: 2.17 ACRES = 93,832.0 SQ. FT.

**FOR REVIEW
 NOT FOR
 CONSTRUCTION**
 9/13/2013

DATE	BY	REVISION

PROJECT NO. _____
 CAD DRAWING FILE _____
 COPYRIGHT: 2013/2014

PROPOSED LANDSCAPE PLAN AND LIGHTING LAYOUT