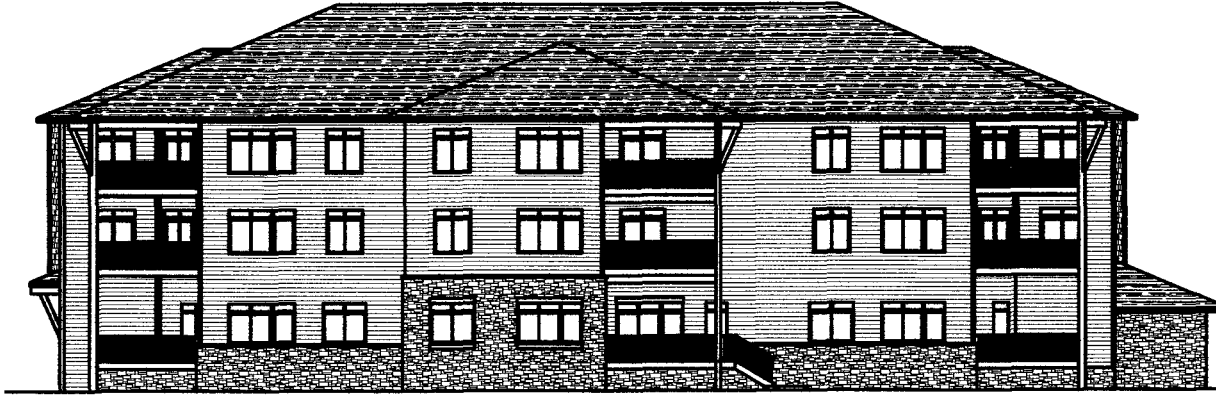


RAPID CITY COMMUNITY PLANNING  
& DEVELOPMENT SERVICES

SEP 17 2013

RECEIVED

ENNIS ASSOCIATES  
Architecture and Planning  
13664 Turbony Court  
Broomfield, Colorado 80020  
(303) 465-2963 / fax (303) 410-1762  
e-mail: ennis@ennis.com



WEST ELEVATION  
1/8" = 1'-0"



NORTH ELEVATION  
1/8" = 1'-0"



SOUTH ELEVATION  
1/8" = 1'-0"



EAST ELEVATION

FOUNDERS PARK MIXED USE NO. 1  
RAPID CITY, SD.

FOR REVIEW  
NOT FOR  
CONSTRUCTION  
9/13/2013

PROJECT NO.	13PD039
DATE	9/13/2013
PROJECT	FOUNDERS PARK MIXED USE NO. 1
OWNER	FOUNDERS PARK MIXED USE NO. 1
DESIGNED BY	ENNIS ASSOCIATES
CHECKED BY	ENNIS ASSOCIATES
DATE	9/13/2013

PROPOSED EXTERIOR  
ELEVATIONS