

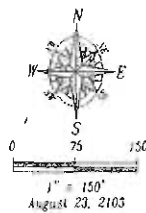
Fountain Plaza Drive

N Plaza Drive

Wesleyan Blvd

Plaza Blvd

S Plaza Drive



Proposed
Tract T
5.72 Ac
249,233 SF

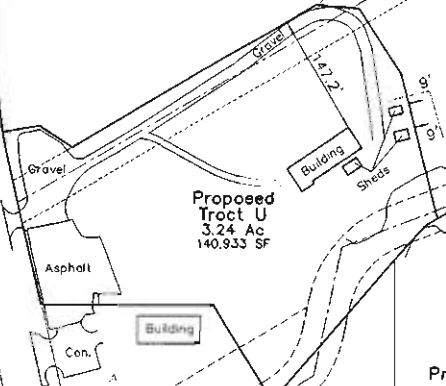
Proposed
Tract U
3.24 Ac
140,933 SF

Proposed
Tract W
1.70 Ac
74,149 SF

Proposed
Tract V
1.30 Ac
58,512 SF

50' Easement
for natural gas
main

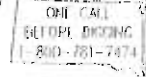
Major Drainage
Easement



RECEIVED

SEP 10 2013

Rapid City Community Planning
& Development Services



Fisk Land Surveying
& Consulting, Inc.
1001 11th Street, Rapid City, SD 57701
Phone: (605) 348-3338
Fax: (605) 341-1112 (IN)

Site Plan - Proposed Plat
Unplatted portion of S1/2 NE1/4 S of 1-90.
Unplatted portion of N1/2 SE1/4
(Both formerly portions of vacated Tract C Revised
and vacated Tract 20R of SG Interstate Subdivision)
Rapid City, Pennington County, South Dakota

Surveyed by	ML-6/14/13
Drawn by	BL / RW
Date	8/23/13
Checked by	JF
Revisions	
Site Map	1"=150'
Project No.	13-06-04

PRELIMINARY