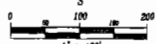


Plat of Lots T, U, V and W of Fountain Springs Business Park
 formerly the unplattd portion of the S 1/2 NE South of 1-90: the unplatted portion of the
 N 1/2 SE 1/4 (both formerly part of vacated Tract C Revised and vacated Tract 20R of SG
 Interstate Subdivision less Tract R of Fountain Springs Business Park)
 located in E 1/2 of Section 27, T2N, R7E, E.H.M.,
 Rapid City, Pennington County, South Dakota

13PL097



August 22, 2013
 Basis of Bearings
 Grid North as
 determined by GPS

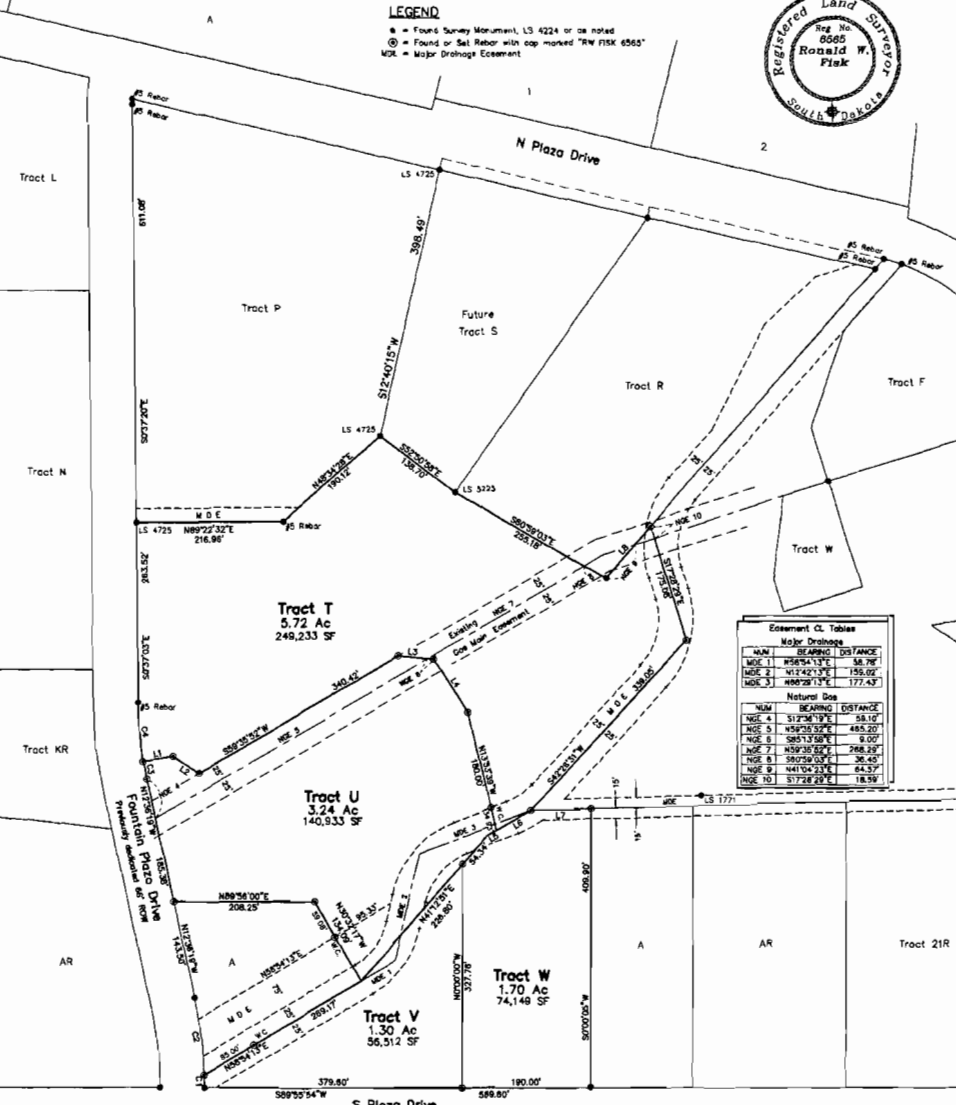
Prepared by Fisk Land Surveying
 & Consulting Engineers, Inc.
 P.O. Box 8154, Rapid City, SD 57709
 605-346-1538
 Project # 13-06-04

All measurements shown are measured in this survey
 see previous plats for record information.
 Utility & Minor Drainage Easements: If on the interior sides of all lot lines
 All major drainage easements shown herein shall be kept free of all obstructions,
 including but not limited to buildings, walls, fences, hedges, trees and shrubs.
 These easements grant to all public authorities the right to construct, operate,
 maintain, inspect and repair such improvements and structures as it deems essential
 to facilitate drainage from any source.
 The previously platted major drainage easement was annotated from PI to PI. Current
 plotting prescribes these easements. The inside radius (100') and outside radius (150')
 is shown on the original easement as graphically represented herein.
 The 50' Wide Natural Gas Line Easement as shown on the vacated current plat parcel
 indicates a 50' minimum building setback from the easement centerline.



LEGEND

- = Found Survey Monument, L3, 4224 or as noted
- ⊙ = Found or Set Rebar with cap marked "RW FISK 6565"
- MDE = Major Drainage Easement



Easement CL Tables		
Major Drainage		
NUM	BEARING	DISTANCE
MDE 1	R56°54'13"E	58.76'
MDE 2	N11°42'13"E	156.05'
MDE 3	S88°29'13"E	177.43'
Natural Gas		
NUM	BEARING	DISTANCE
NGE 4	S17°46'19"E	58.10'
NGE 5	S45°10'52"E	485.20'
NGE 6	S85°13'58"E	8.00'
NGE 7	N59°35'59"E	296.23'
NGE 8	S89°20'03"E	36.45'
NGE 9	N41°04'23"E	64.33'
NGE 10	S17°46'19"E	18.96'

Lot 5 Tract 1	Lot 4 Tract 1	Lot 3 Tract 1	Lot 2 Tract 1	Lot 1 Tract 1	Lot A Tract 2
------------------	------------------	------------------	------------------	------------------	------------------

Property Line Short Course Tables

NUM	BEARING	DISTANCE
L1	S90°23'01"W	44.97'
L2	N56°19'03"E	45.97'
L3	S65°13'58"E	52.40'
L4	S32°56'14"W	83.00'
L5	N59°02'46"E	17.28'
L6	N89°02'46"E	88.88'
L7	N89°25'28"E	58.11'
L8	N41°04'23"E	100.51'

NUM	DELTA	ARC	RADIUS	BEARING	DISTANCE
C1	144°11'	16.56'	613.02'	N17°00'53"W	78.56'
C2	107°48'43"	13.32'	613.02'	N17°00'53"W	115.15'
C3	27°00'48"	27.58'	536.44'	S11°09'22"E	27.96'
C4	9°02'14"	88.00'	536.44'	S8°10'22"E	85.00'