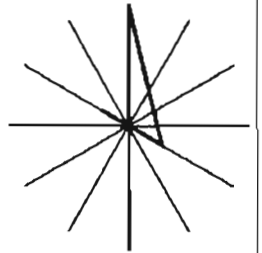


13PD038

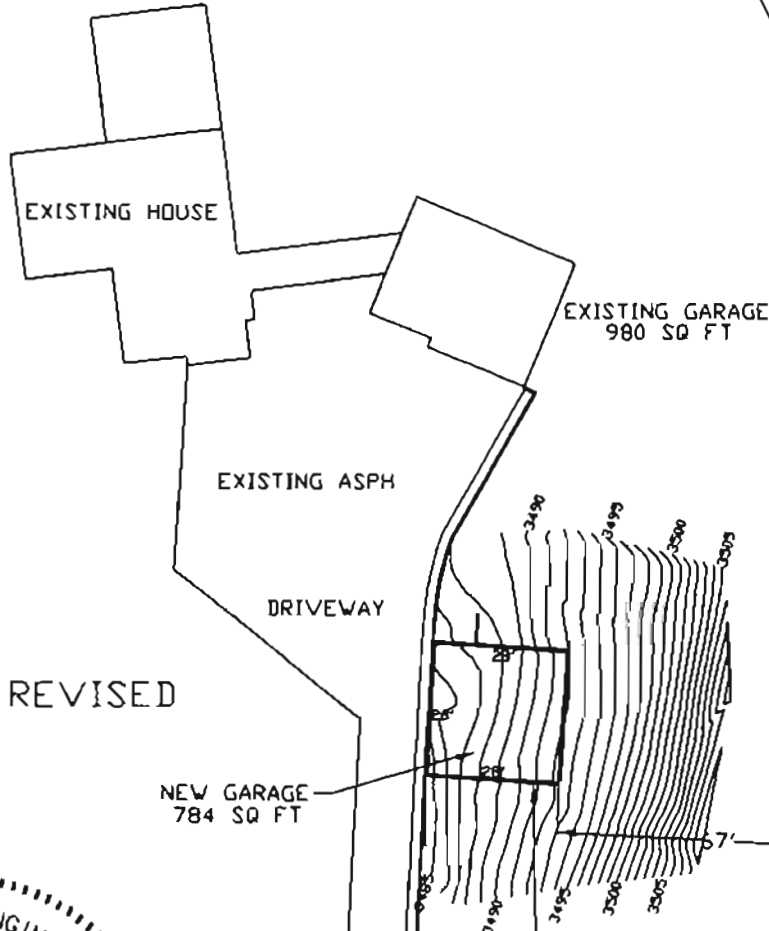
# SITE PLAN

LEGAL DESCRIPTION: LOT 1 OF TRACT SB REVISED OF SPRINGBROOK ACRES  
NE1/4 AND SE1/4 OF SECTION 15, T1N, R7E, BHM.  
RAPID CITY, PENNINGTON COUNTY, SOUTH DAKOTA.



DATE: 082-22-2013

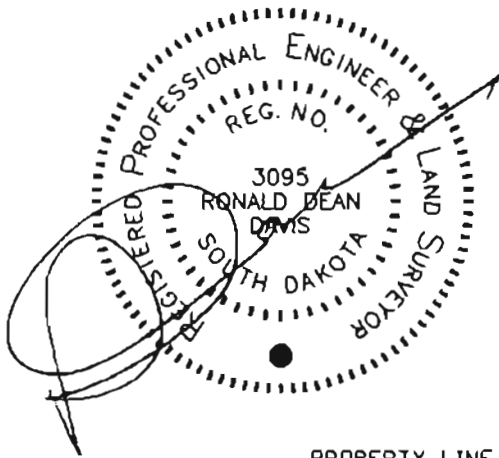
SCALE: 1"=40'



LOT 1 OF TRACT SB REVISED

NEW GARAGE 784 SQ FT

PROPERTY LINE



PROPERTY LINE

## RECEIVED

SEP 13 2013

Rapid City Community Planning & Development Services



I, Ronald D. Davis, Registered Land Surveyor No. 3095 of the State of South Dakota, do hereby certify that the measurements shown hereon were done by me or under my direct supervision. The purpose of this drawing is to show the location of a new proposed garage. The addition of this garage to Lot 1 will exceed the allowable 1500 sq ft for Park Forest zoning by 264 sq ft. ( 1500 sq ft - 1764 sq ft ).

DAVIS ENGINEERING, INC., 1060 KINGS ROAD...RAPID CITY, SD..605-341-3095