

LEGEND

- = Found Survey Monument LS6119 or as noted
- ⊙ = Set Rebar with cap marked "RW Fisk 6565"
- ⊙ = Sanitary Sewer Monhole (Unless noted)
- ⊥ = Water Service Curb Stop
- ⊠ = Electric Meter
- ⊠ = Electric Box
- ⊠ = Telecommunications Pedestal
- = Sanitary Sewer Line

RAPID CITY COMMUNITY PLANNING & DEVELOPMENT SERVICES

AUG 22 2013

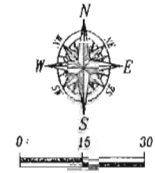
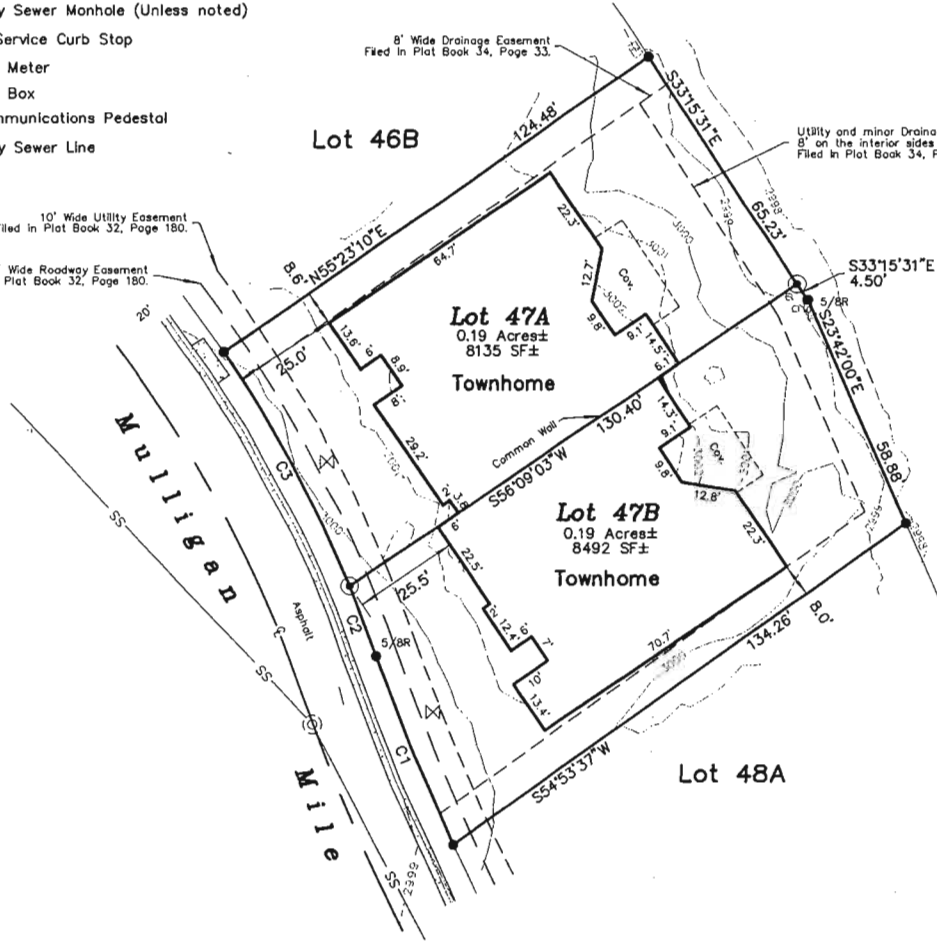
RECEIVED

10' Wide Utility Easement
Filed in Plat Book 32, Page 180.

5' Wide Roadway Easement
Filed in Plat Book 32, Page 180.

8' Wide Drainage Easement
Filed in Plat Book 34, Page 33.

Utility and minor Drainage Easement:
8' on the interior sides of all side and rear lot lines.
Filed in Plat Book 34, Page 33.



August 19, 2013
Basis of Bearings
Plat Recorded in Book 34, Page 33.
Elevations are Assumed



Curve Table					
NUM	DELTA	ARC	RADIUS	BEARING	DISTANCE
C1	5°50'20"	48.91'	480.00'	N21°55'16"W	48.89'
C2	3°13'56"	18.05'	320.00'	N20°34'08"W	18.05'
C3	11°27'40"	64.01'	320.00'	N27°54'56"W	63.90'

Fisk Land Surveying & Consulting, Inc.
1022 Main Street (P.O. Box 8154)
Rapid City, South Dakota 57709
(605) 348-1538
(605) 348-1112 (fax)

Site Plan
Lot 47, Village on the Green No. 2 Subdivision
Pennington County, South Dakota

Surveyed by:
ML/CD
Date
8/15/13
Drawn by:
CDD
Checked by:
JF
Revisions

Site Plan
1
of
1
Project No.
13-08-04