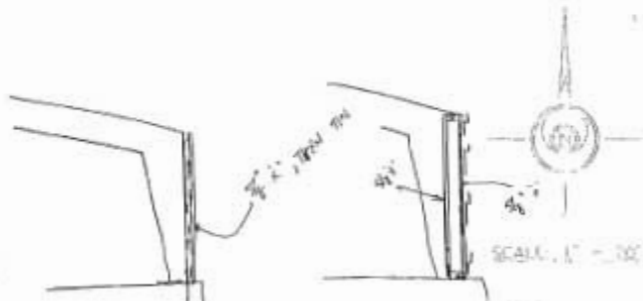
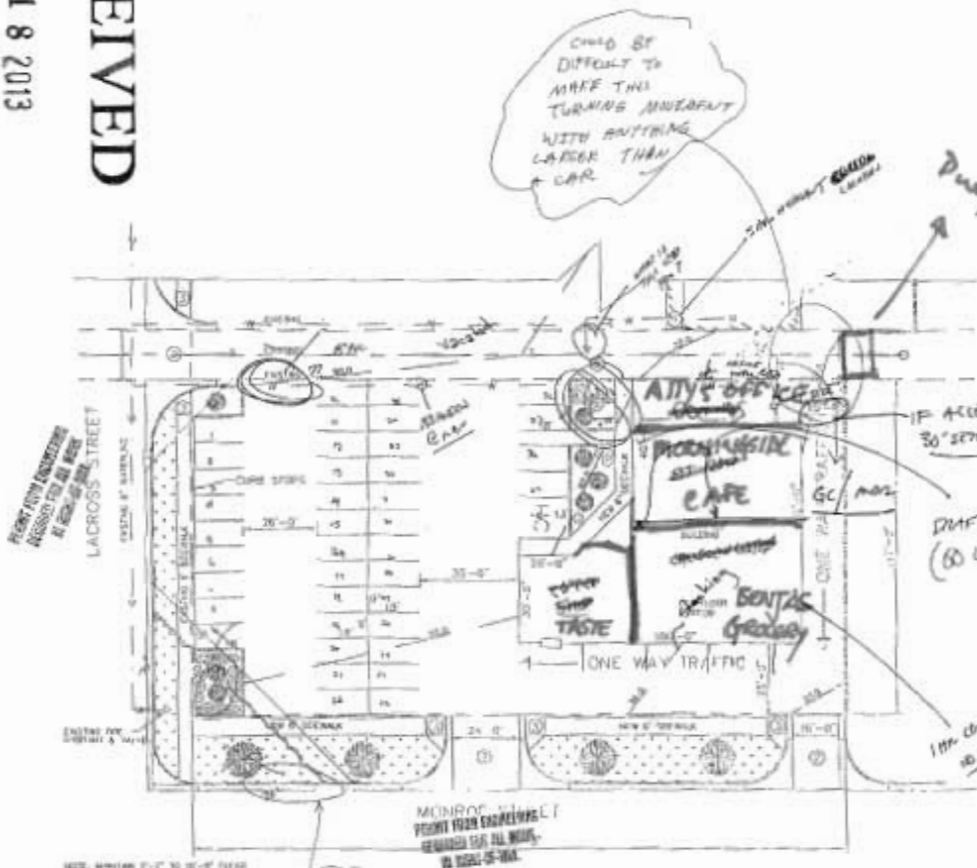


JUL 18 2013

RECEIVED



- TYPE II-2
- CONST (4/5003 - 8000 SQFT + 100' - 1000' HIGHER (POWER-10))
- B/S OCCUPANT
- SEE EXISTING FIXTURES
- SEPARATE SIGN PLACENT 2000
- SEPARATE SIGN PLACENT 2000
- HANDOUT ATX 2000 HERE 2000
- 100' FOR WALL 2000 2000' WALL (OFFICE A 10' FRONT)



LANDSCAPE REQUIREMENTS

TYPE	NO.	SIZE	PLACEMENT
SPRING	1	18\"	WEST SIDE
SHRUB	2	12\"	EAST SIDE
TREE	3	24\"	CENTRAL
COLLECTOR	4	36\"	PERIMETER

PARKING REQUIREMENTS

DRIVING AREA	5000 SQ FT
PERCENTAGE	10% (500 SQ FT)
MINIMUM SPACES	50
PERCENTAGE	10%

NOTES

1. MATERIALS SHALL BE... (illegible)
2. MATERIALS SHALL BE... (illegible)
3. MATERIALS SHALL BE... (illegible)
4. MATERIALS SHALL BE... (illegible)

RAPID CITY BUILDING DEPARTMENT
 Reviewed by: *[Signature]*
 Date: 5-21-14

CONTRACTOR SHALL
 VERIFY ALL CODES
 WITH CITY ENGINEER

CONTRACTOR SHALL
 VERIFY ALL CODES
 WITH CITY ENGINEER

NOTICE
 NOTICE BEARING THIS SIGNATURE SHALL BE IN FULL COMPLIANCE WITH ALL ORDINANCES, CODES, AND REGULATIONS OF THE CITY OF RAPID CITY, SOUTH DAKOTA.

NOTICE
 NOTICE BEARING THIS SIGNATURE SHALL BE IN FULL COMPLIANCE WITH ALL ORDINANCES, CODES, AND REGULATIONS OF THE CITY OF RAPID CITY, SOUTH DAKOTA.

NOTICE
 NOTICE BEARING THIS SIGNATURE SHALL BE IN FULL COMPLIANCE WITH ALL ORDINANCES, CODES, AND REGULATIONS OF THE CITY OF RAPID CITY, SOUTH DAKOTA.

DUNHAM ARCHITECTS
 ARCHITECTS
 1111 W. 10th Street
 Rapid City, SD 57701
 Phone: 605.343.4444
 Fax: 605.343.4445
 Website: www.dunhamarchitects.com