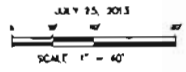


SITE EXHIBIT
LOTS 4-8 OF BLOCK 12, AND LOTS 9-13 OF BLOCK 13
RED ROCK VILLAGE SUBDIVISION
LOCATED IN THE NE1/4 OF THE NE1/4 OF
SECTION 20, T4N, R7E, B4W
RAPID CITY, PENNINGTON COUNTY, SOUTH DAKOTA

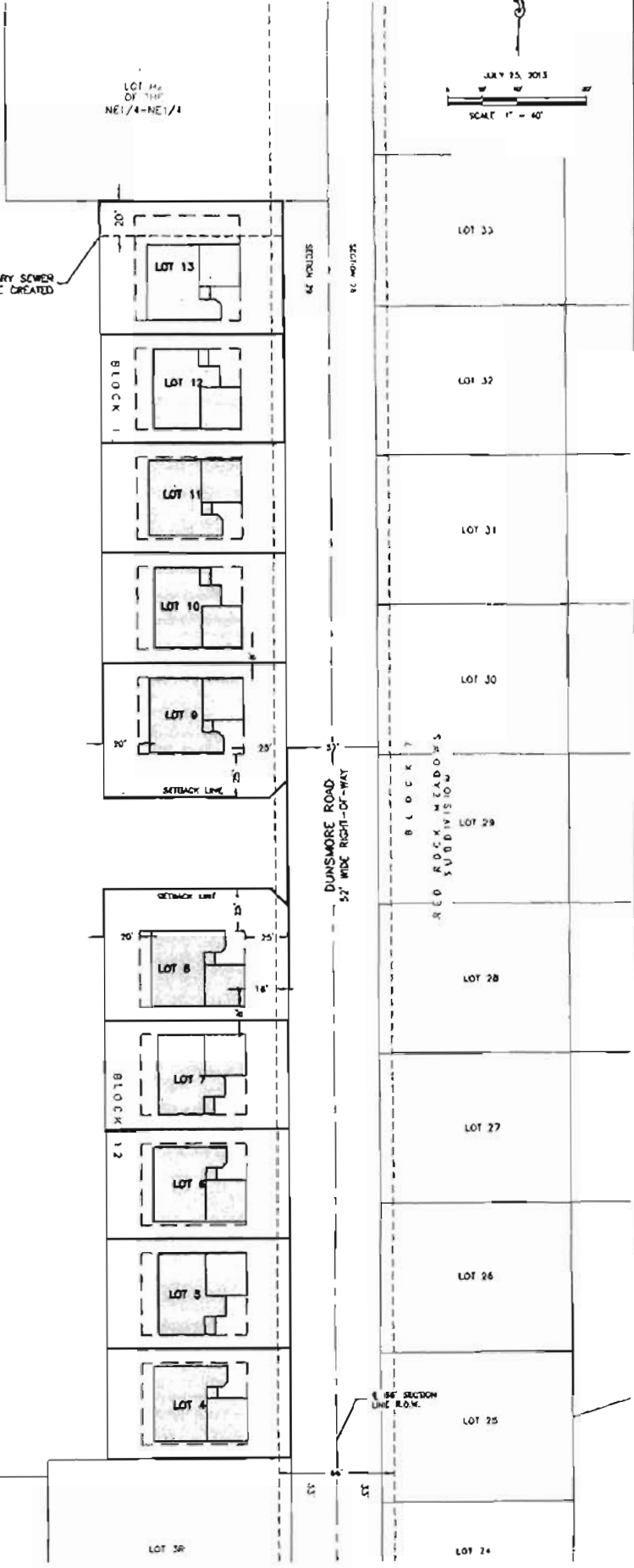


LOT 14 OF THE NE1/4-NE1/4

20' WIDE SANITARY SEWER CASEMENT TO BE CREATED

TRACT A
RED ROCK VILLAGE
SUBDIVISION

- LOT SETBACKS**
- (20') ALL FROM LOT LINES
 - (50') LOWER ORDER FRONT-OF-WAY
 - (8') ALL SIDE LOT LINES
 - (25') FROM FRONT-OF-WAY
 - (18') FROM SECTION LINE FRONT-OF-WAY



RECEIVED

JUL 26 2013

CITY COMMUNITY PLANNING
DEVELOPMENT SERVICES