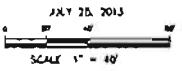


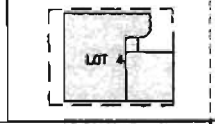
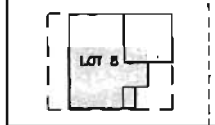
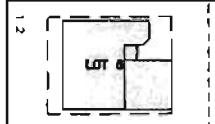
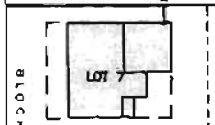
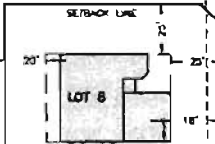
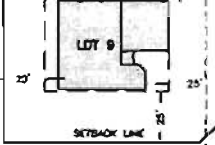
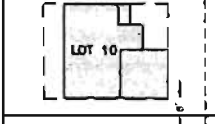
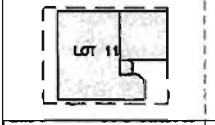
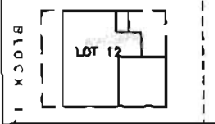
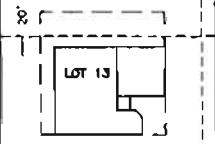
LOTS 4-8 OF BLOCK 12, AND LOTS 9-13 OF BLOCK 13
RED ROCK VILLAGE SUBDIVISION
LOCATED IN THE NE1/4 OF THE NE1/4 OF
SECTION 22, T1N, R7E, B1W4
RAPID CITY, PENNINGTON COUNTY, SOUTH DAKOTA

SITE EXHIBIT



20' WIDE SANITARY SEWER
EASEMENT TO BE CREATED

LOT 12
OF THE
NE1/4-NE1/4



12' HOUSERS
18' HOUSERS

DUNSMORE ROAD
32' WIDE RIGHT-OF-WAY

BLOCK 13
RED ROCK MEADOWS
SUBDIVISION

LOT 33

LOT 32

LOT 31

LOT 30

LOT 29

LOT 28

LOT 27

LOT 26

LOT 25

LOT 24

LOT 34

RECEIVED

JUL 26 2013

RAPID CITY COMMUNITY PLANNING
& DEVELOPMENT SERVICES

TRACT A
RED ROCK VILLAGE
SUBDIVISION

- LOT SETBACKS
- (20') ALL REAR LOT LINES
 - (20') LOWER ORDER RIGHT-OF-WAY
 - (15') ALL SIDE LOT LINES
 - (25') FROM RIGHT-OF-WAY
 - (18') FROM SECTION LINE RIGHT-OF-WAY