

CONSTRUCTION LAYOUT NOTES

CURB ELEVATION:
 EDGE OF PARAPET TO TOP-BACK-CURB = 0.34'
 EDGE OF PARAPET TO OUTER = 0.11'
 BUTTER TO TOP-BACK-CURB = 0.35'
 THERE ARE DETAILS ON THE OTHER SHEETS.

ELEVATION INTERPOLATION:
 ELEVATIONS TO FINISH ALONG THE CURB SHALL BE DETERMINED BY CONTINUING THE CONCRETE SLOPE TO THE EDGE OF PARAPET, AND ADDING 0.35' TO OBTAIN TOP-BACK-CURB ELEVATION.

VERTICAL CHANGES IN SLOPE:
 WHERE CHANGES IN SLOPE OCCUR, CONSTRUCT THE NEW SURFACE WITHOUT SHARP VERTICAL BENDS IN THE CONCRETE CURB/SIDEWALK. SMOOTH THE CONSTRUCTION TO PRODUCE A VERTICALLY CURVED SURFACE. SHARP CHANGES IN GRADE MUST BE NOTICED.

ONE LAYOUT:
 JOINT LAYOUT SHOWN ON PLANS MAY BE ADJUSTED. CURVE CONCRETE PANELS DO NOT EXCEED 12' IN ANY DIRECTION.

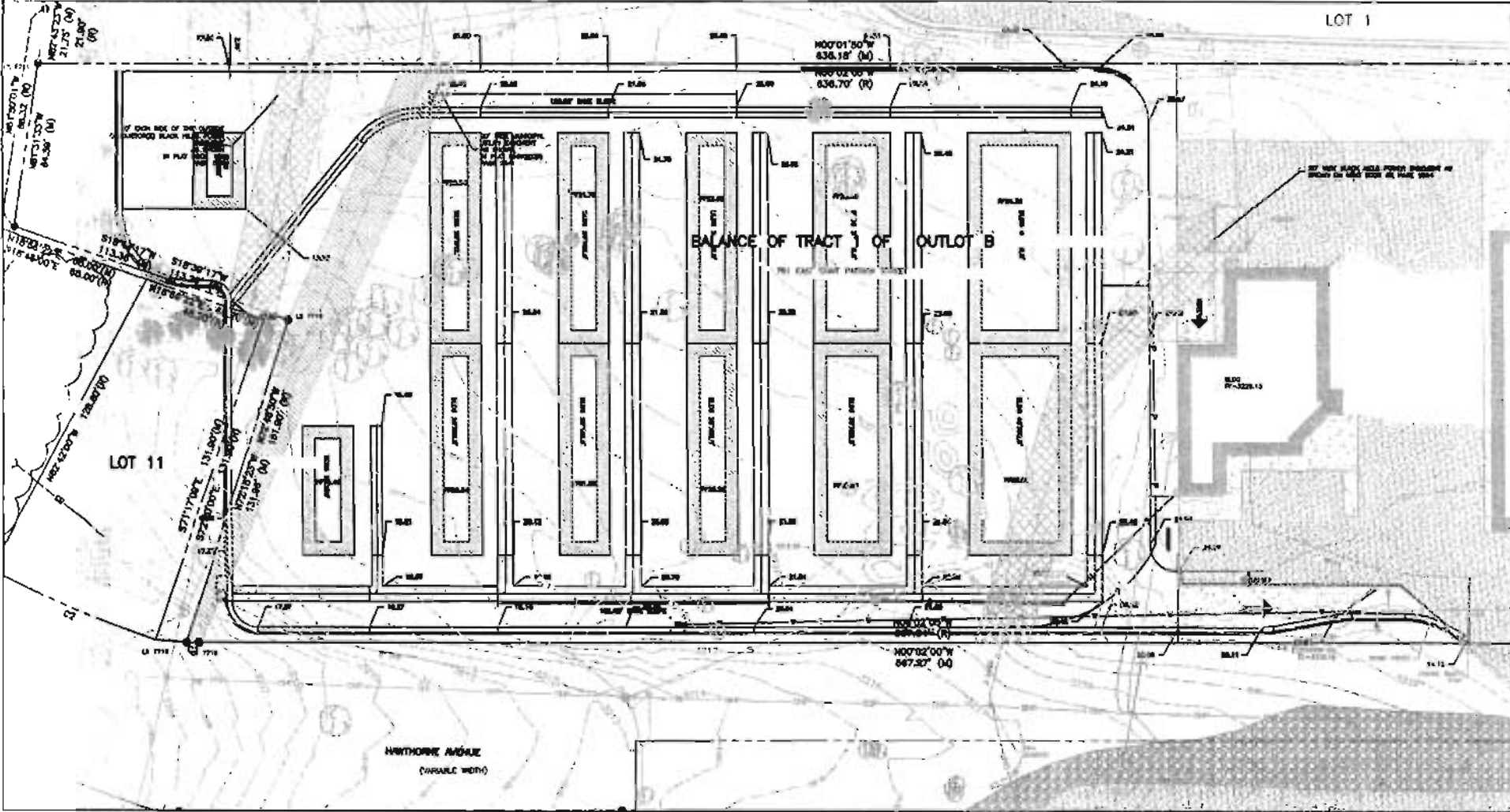
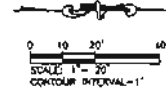
STREET LIGHTING:
 WALL MOUNTED LIGHTS TO BE USED FOR ARCHITECTURAL.

EXISTING TRUCK CURVED VEHICLE SUBSTITUTION



Engine 4 RC Fire

Year	2017
Width	14.20
Turning Length	27.4



LOT 1

LOT 11

BALANCE OF TRACT 1 OF OUTLOT B

HARTHORNE AVENUE
 (VARIOUS WIDTH)

RIMME & ASSOCIATES, L.L.C.
 915 S. GARDNER AVENUE, SUITE 100, DENVER, CO 80202
 PHONE: 303.733.1111 FAX: 303.733.1112
 WWW.RIMMEANDASSOCIATES.COM

PRELIMINARY

Scale: 1/4"=1'-0"
 Drawn by: KEM
 Checked by: KEM
 Date: 11/15/2017

LOCATION
ST. PATRICK STREET STORAGE UNITS
 BALANCE OF TRACT 1 OF OUTLOT B
 MERCHANTS FIRST ADDITION
 LOCATION IN THE NORTHWEST CORNER OF THE BLOCK
 SECTION 4, T13N, R16E, B14W
 PEARL CITY, FLEMING COUNTY, SOUTH DAKOTA

CITY/STATE/COUNTY
 PEARL CITY, SOUTH DAKOTA
 COUNTY: FLEMING COUNTY

PROJECT NO.
 #2627

SHEET NO.
 SITE LAYOUT

TOTAL SHEETS
 5 of 7