

# Rebar Info

Map of Survey  
 Lot 4 in Block 4  
 Feigel Subdivision  
 Rapid City, Pennington County, South Dakota

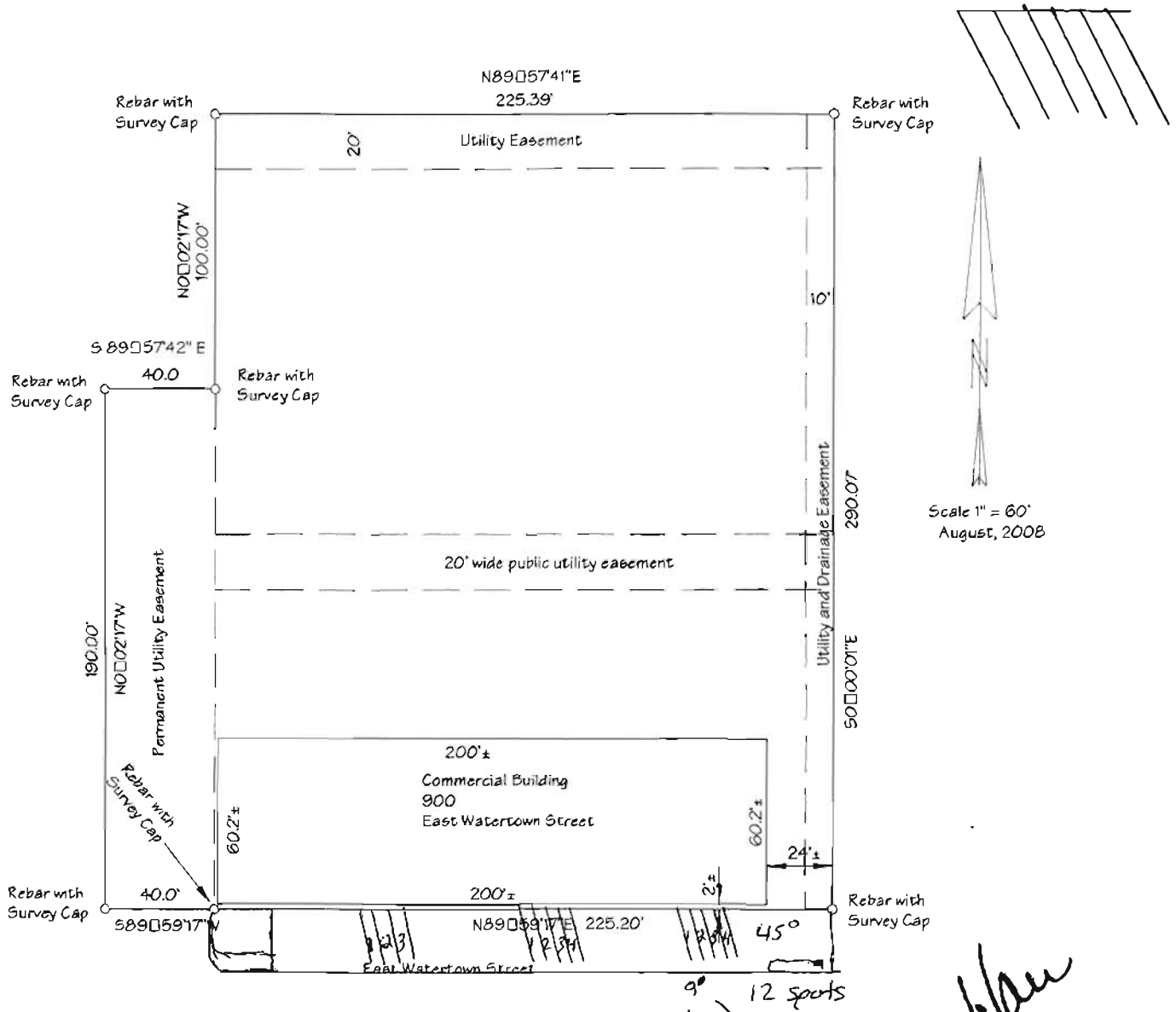
13PD022

## Exception:

To waive the requirement to provide 6 parking spaces for the new use that meets City design standards and to allow backing into right-of-way.

Justification

45° to 60° parking allowed



### Parking Calcs for Legal non-conforming uses

Existing Storage 10,400 @ .25/1000 = 2.6  
 Existing office 400 @ 5/1000 = 2  
 4.6

### Parking Calcs for Kennel/Pet Store

Storage 600 @ .25/1000 = .15  
 Retail 300 @ 5/1000 = 1.5  
 Kennel 900 @ 4/1000 = 3.6  
 5.25

4.6  
 + 5.25  
 -----  
 9.85  
 or  
 10 total spaces

*Norman Wilson*