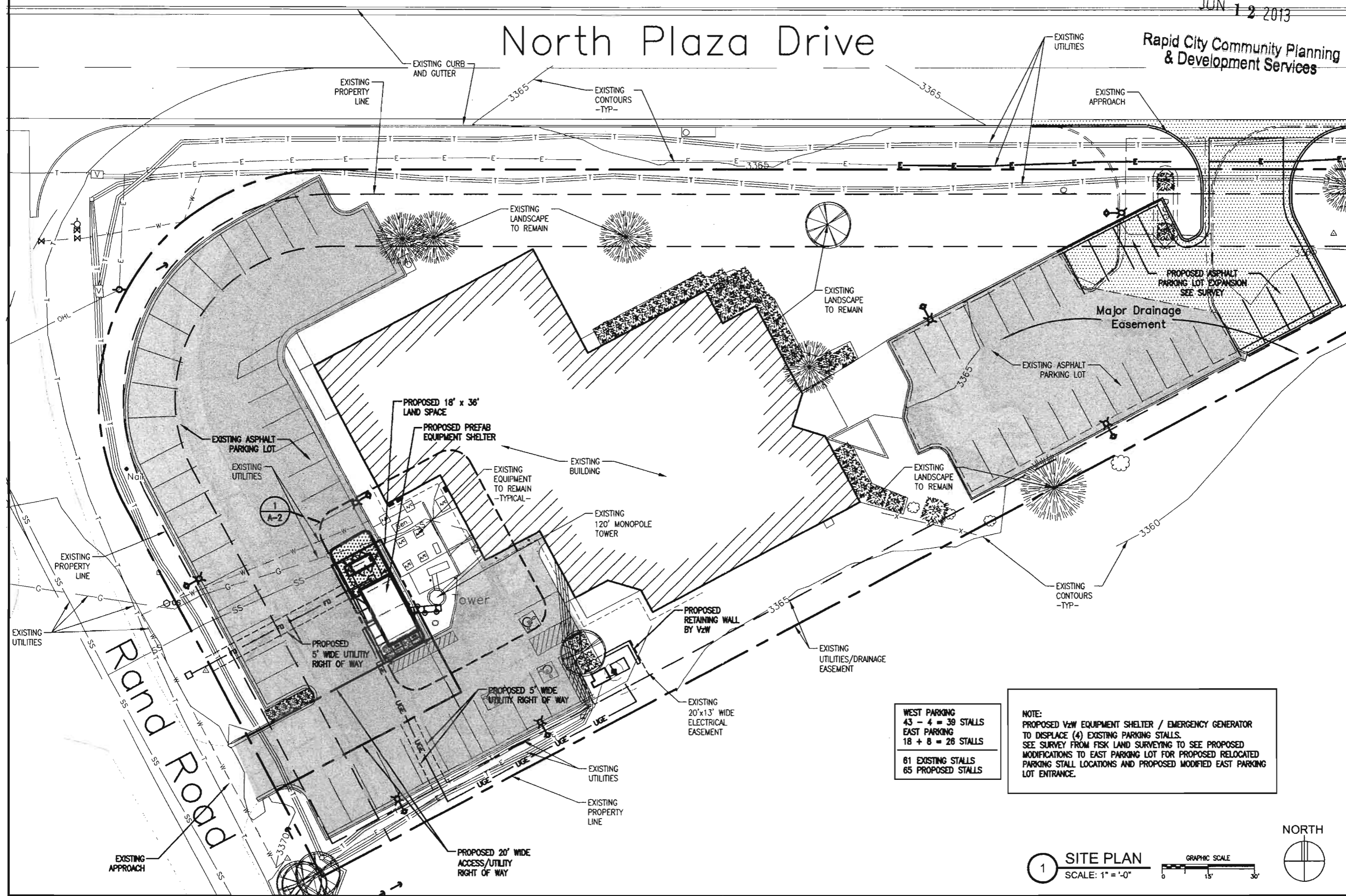


RECEIVED

JUN 12 2013

# North Plaza Drive

Rapid City Community Planning & Development Services



I hereby certify that the portion of this technical submission described below was prepared by me or under my direct supervision and responsible charge. I am a duly registered Architect under the laws of the State of SOUTH DAKOTA. ROBERT J. DAVIS, Reg. No. 7188

Signed: \_\_\_\_\_  
Date: \_\_\_\_\_

**DESIGN 1**

ROBERT J. DAVIS, AIA  
ARCHITECT  
9973 VALLEY VIEW RD.  
EDEN PRAIRIE, MN 55344  
(952) 903-9299

**VERIZON WIRELESS**  
10801 BUSH LAKE ROAD  
BLOOMINGTON, MN 55438  
(612) 720-0030

PROJECT  
20120822235

RCYC  
WEST RAPID

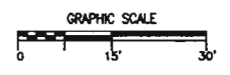
PLAZA DRIVE  
RAPID CITY, SD 57701

SHEET CONTENTS:  
SITE PLAN

WEST PARKING	43 - 4 = 39 STALLS
EAST PARKING	18 + 8 = 26 STALLS
81 EXISTING STALLS	
65 PROPOSED STALLS	

NOTE:  
PROPOSED VzW EQUIPMENT SHELTER / EMERGENCY GENERATOR TO DISPLACE (4) EXISTING PARKING STALLS. SEE SURVEY FROM FISK LAND SURVEYING TO SEE PROPOSED MODIFICATIONS TO EAST PARKING LOT FOR PROPOSED RELOCATED PARKING STALL LOCATIONS AND PROPOSED MODIFIED EAST PARKING LOT ENTRANCE.

**1 SITE PLAN**  
SCALE: 1" = 40'



A-1