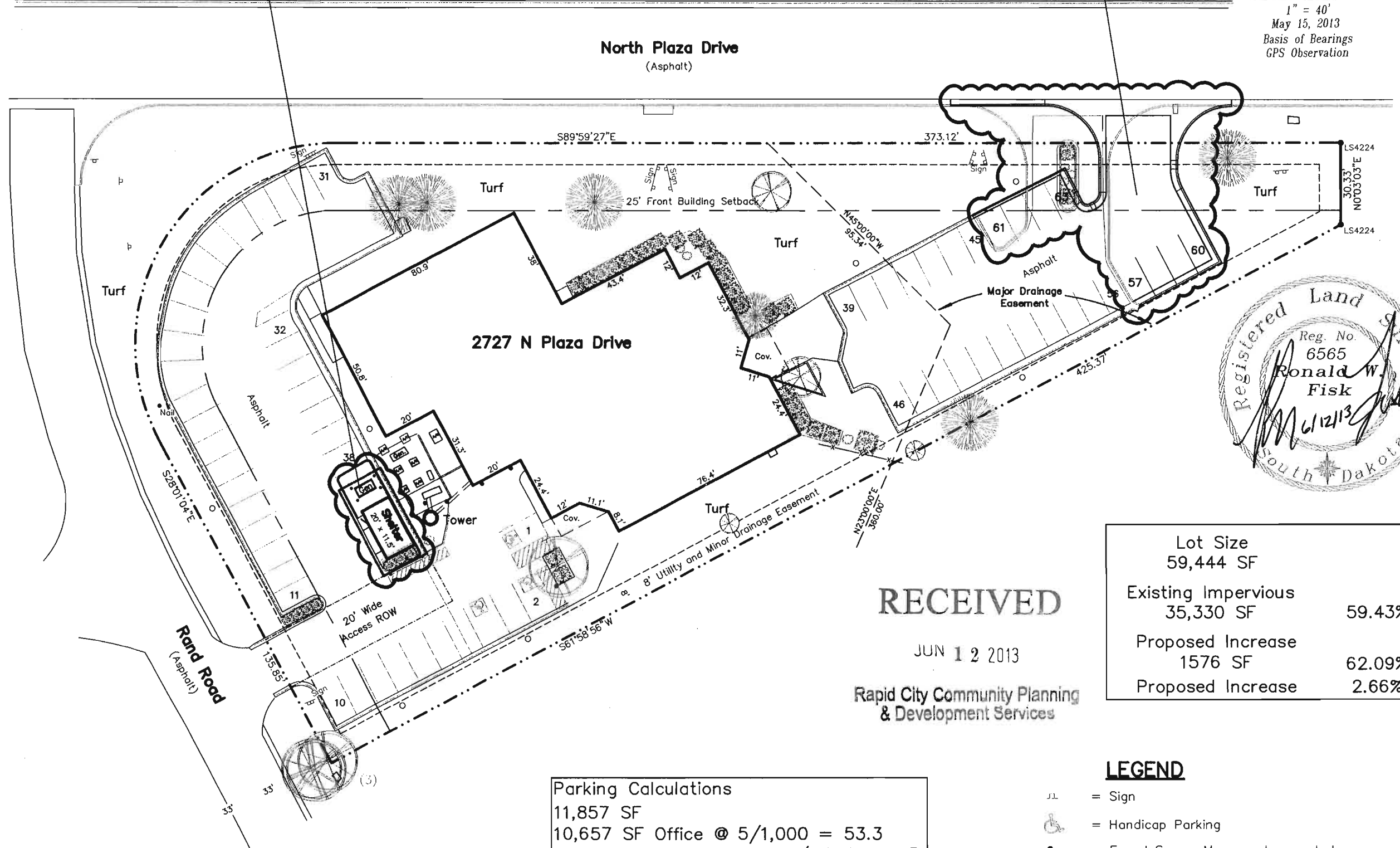
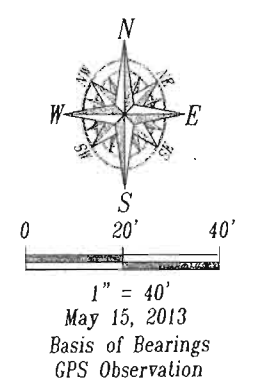


Proposed Shelter/Generator Addition

Proposed Parking Addition & Approach Amendment



**RECEIVED**  
 JUN 12 2013  
 Rapid City Community Planning & Development Services

Lot Size	59,444 SF	
Existing Impervious	35,330 SF	59.43%
Proposed Increase	1576 SF	62.09%
Proposed Increase		2.66%

Parking Calculations	
11,857 SF	
10,657 SF Office @ 5/1,000	= 53.3
1,200 SF Warehouse @ .25/1,000	= 0.3
53.6 Required Spaces	
63 Provided Spaces	

- LEGEND**
- 11 = Sign
  - ♿ = Handicap Parking
  - = Found Survey Monument as noted

Fisk Land Surveying & Consulting Engineers, Inc.  
 1022 Main Street (P.O. Box 8154)  
 Rapid City, South Dakota 57709  
 (605) 348-1538  
 (605) 341-1112 (fx)

Parking Exhibit  
 Tract E of Fountain Springs Business Park  
 Rapid City, South Dakota

Surveyed by:	CD, ML, BL
Date	12/6/12
Drawn by:	RWF5/14/13
Checked by:	RWF
Revisions	6/11/13 Removed Landscape Notes
Parking	1 of 1
Project No.	12-12-01