

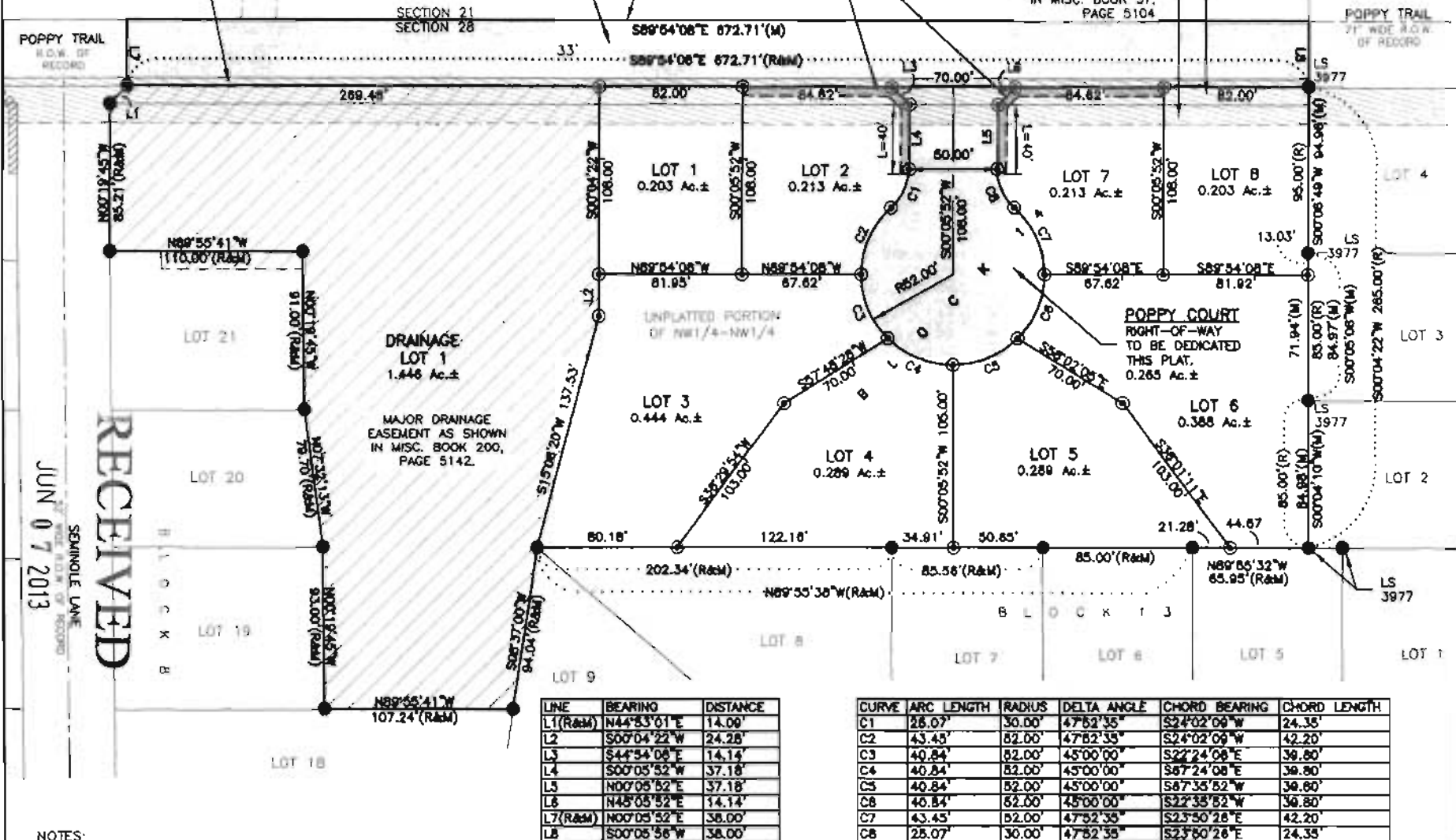
AS SHOWN IN  
MISC. BOOK 200,  
PAGE 5145.

RIGHT-OF-WAY  
TO BE DEDICATED  
THIS PLAT.  
0.666 Ac.±

NON-ACCESS  
EASEMENTS  
TO BE CREATED  
THIS PLAT

BLACK HILLS  
POWER & LIGHT  
COMPANY R.O.W.  
EASEMENT AS SHOWN  
IN MISC. BOOK 57,  
PAGE 5104

UTILITY EASEMENT  
AS SHOWN IN MISC.  
BOOK 57, PAGE 5145



LINE	BEARING	DISTANCE
L1(R&M)	N44°53'01"E	14.00'
L2	S00°04'22"W	24.28'
L3	S44°54'08"E	14.14'
L4	S00°05'52"W	37.18'
L5	N00°08'52"E	37.18'
L6	N45°08'52"E	14.14'
L7(R&M)	N00°08'52"E	38.00'
L8	S00°05'58"W	38.00'

CURVE	ARC LENGTH	RADIUS	DELTA ANGLE	CHORD BEARING	CHORD LENGTH
C1	28.07'	30.00'	47°52'35"	S24°02'09"W	24.35'
C2	43.45'	82.00'	47°52'35"	S24°02'09"W	42.20'
C3	40.84'	82.00'	45°00'00"	S27°24'08"E	39.80'
C4	40.84'	82.00'	45°00'00"	S87°24'08"E	39.80'
C5	40.84'	82.00'	45°00'00"	S87°33'52"W	39.80'
C6	40.84'	82.00'	45°00'00"	S27°33'52"W	39.80'
C7	43.45'	82.00'	47°52'35"	S23°50'28"E	42.20'
C8	28.07'	30.00'	47°52'35"	S23°50'28"E	24.35'

NOTES:

- ⊙ Denotes set 5/8" rebar with survey cap marked "Renner Associates - 9213"
- Denotes Found LS 9213, unless otherwise noted.
- (R) Denotes Recorded in previous plat or description
- (M) Denotes Measured in this survey

CERTIFICATE OF SURVEYOR

State of South Dakota  
County of Pennington

S.S.

