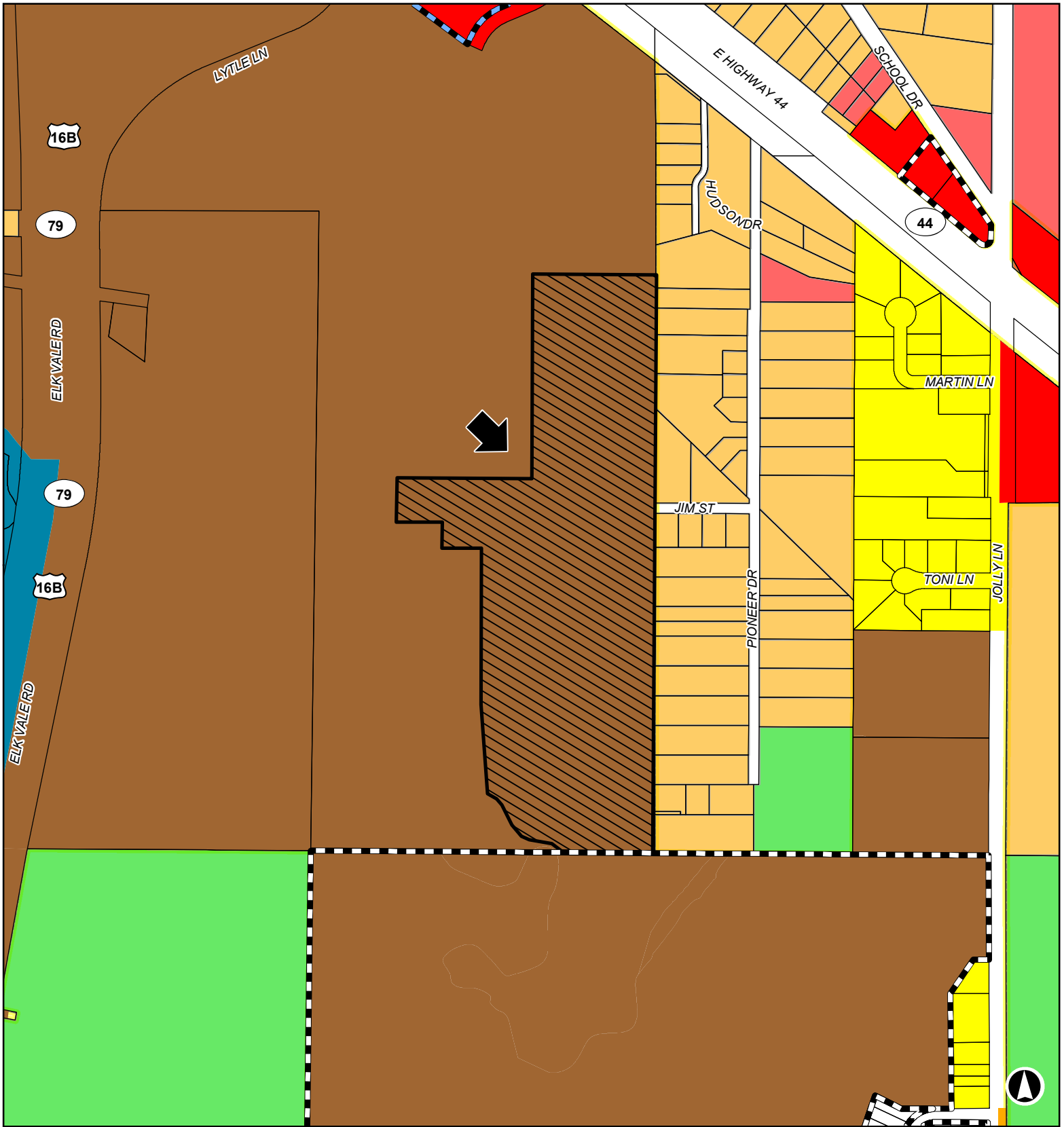


13RZ015

South of SD Highway 44 and east of Elk Vale Road



Rapid City / Pennington County Zoning

Subject Property	Planned Development	Flood Hazard	Low Density Residential-1	Rapid City Limits	<all other values>	Low Density Residential, PC
General Agriculture	Medium Density Residential	No Code	General Commercial, PC	Suburban Residential, PC	Limited Ag., PC	