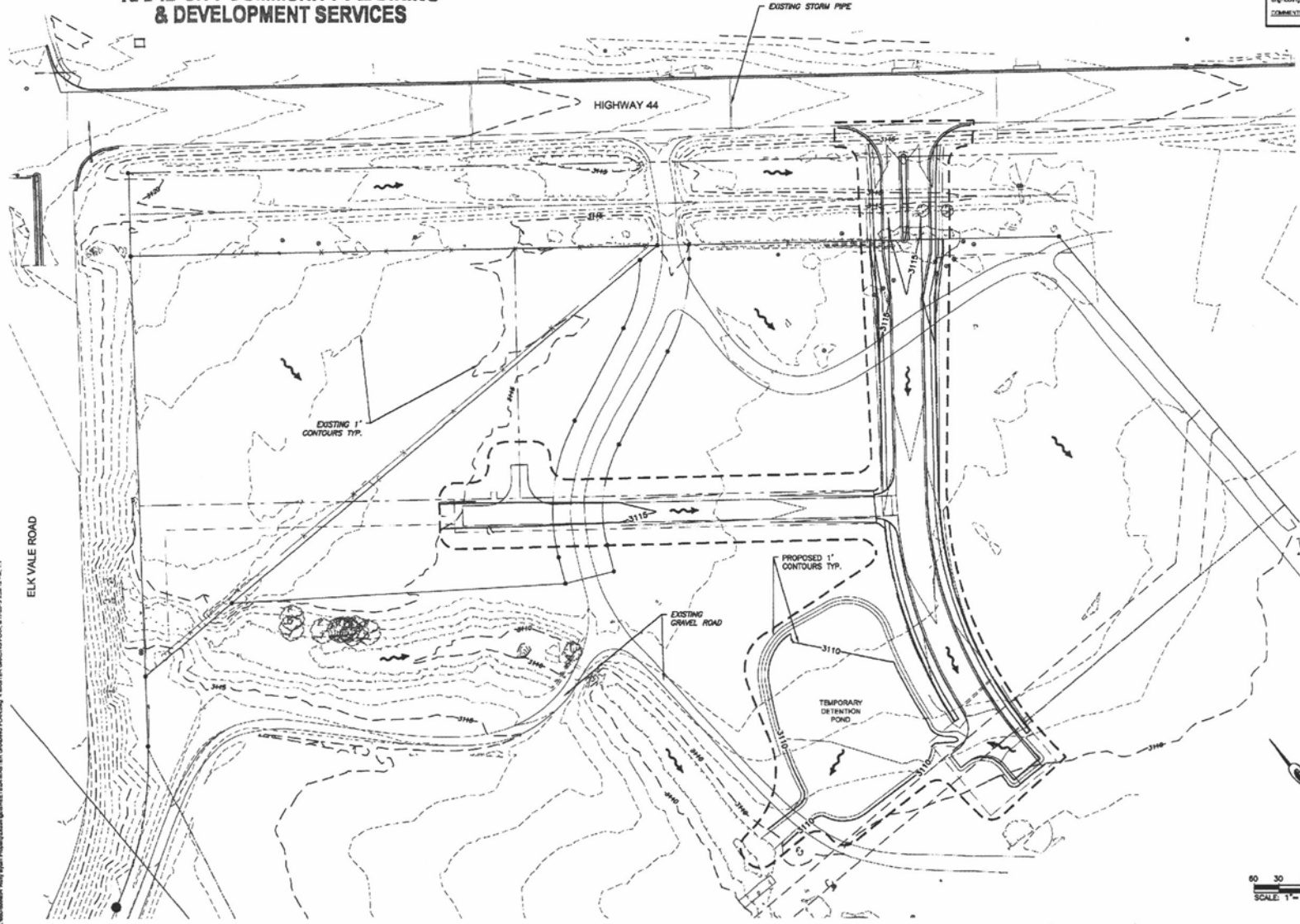


RECEIVED

MAY 17 2013

RAPID CITY COMMUNITY PLANNING & DEVELOPMENT SERVICES



CITY OF RAPID CITY

There are reserved for general contractors with applicable government regulations, stipulations, design criteria and engineering standards. The City of Rapid City does not verify the suitability, accuracy or completeness of the plans or design, which are the responsibility of the engineer of record. All necessary permits shall be obtained prior to construction at the proposed public improvements.

City/County Number: \_\_\_\_\_ Date: \_\_\_\_\_  
 Comments: \_\_\_\_\_

Project No: 13-0054  
 Design By: HS  
 Drawn By: TC/AMW  
 Checked By: \_\_\_\_\_  
 Prepared By: RENNER & ASSOC. LLC

**PRELIMINARY FOR REVIEW ONLY**

**DREAM DESIGN INTERNATIONAL, INC.**  
 ENGINEERING, ARCHITECTURE,  
 LAND PLANNING, CONSTRUCTION ADMINISTRATION  
 558 KANSAS CITY STREET, RAPID CITY, SD 57701  
 PHONE: (605) 346-0338 FAX: (605) 346-0345 WWW.DREAMDESIGNINC.COM

ORCHARD MEADOWS  
 RAPID CITY, SOUTH DAKOTA

Sheet Name: MASTER GRADING PLAN  
 Sheet Number: 4 of 4

