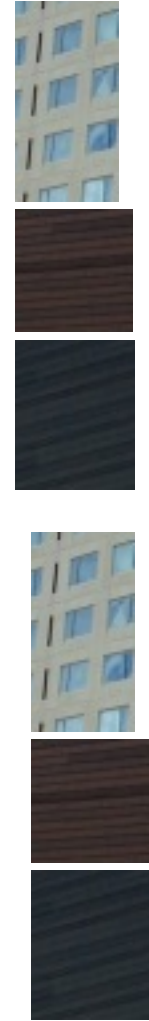
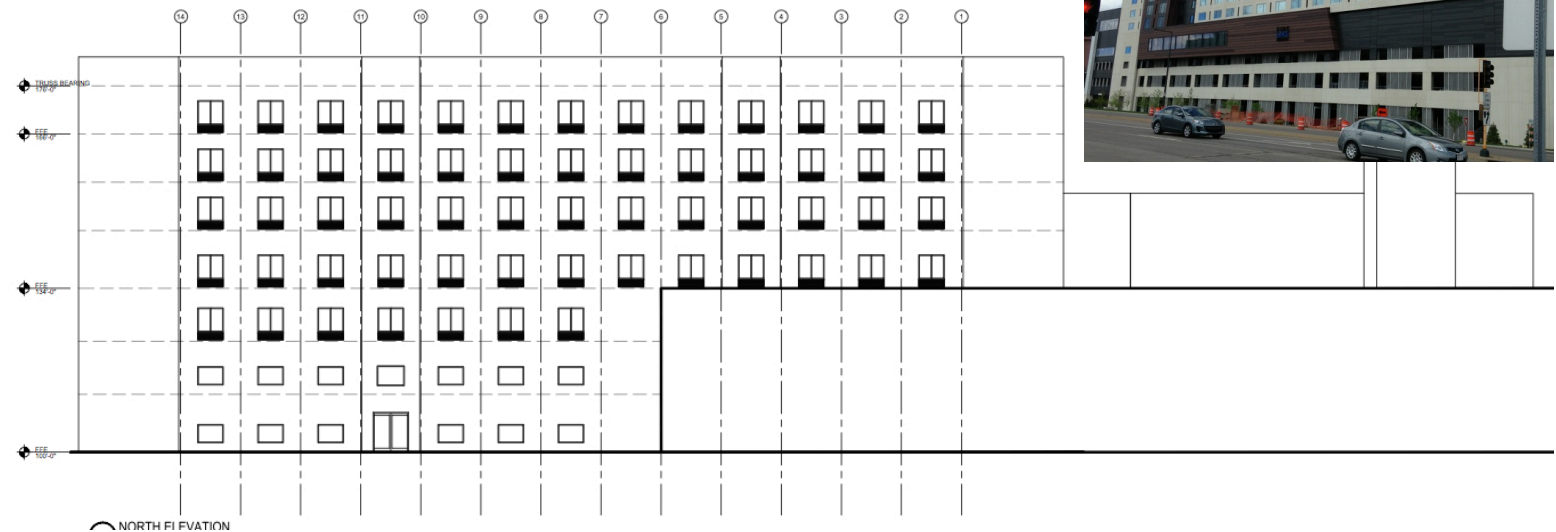


1 EAST ELEVATION
SCALE: 3/32" = 1'-0"



COLOR SELECTION WILL BE AS DETAILED ABOVE PHOTO IS EXAMPLE OF PLACEMENT
STUCCO TOP MIDDLE STAINED CONCRETE PANEL BOTTOM STAINED CONCRETE LAP