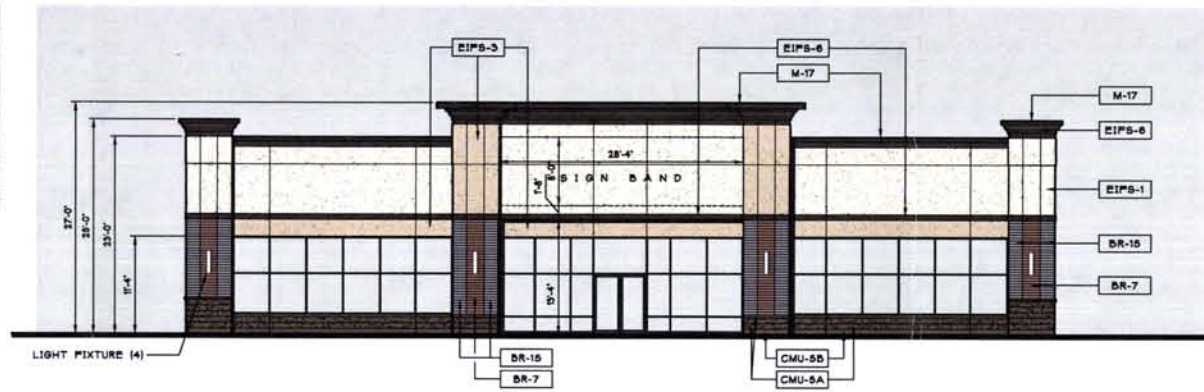
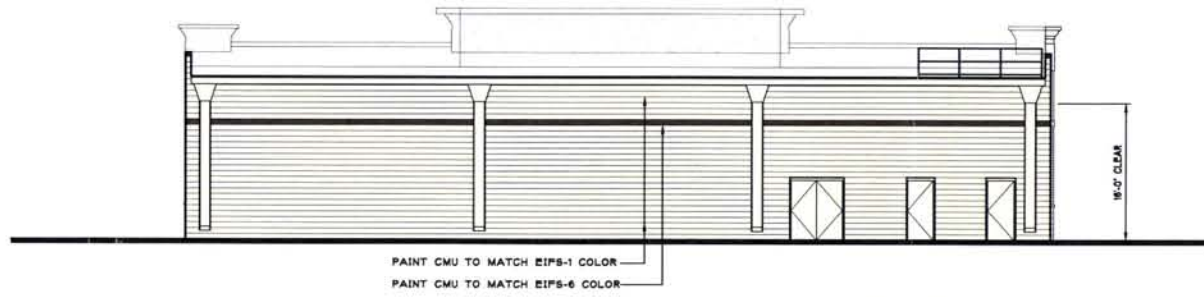


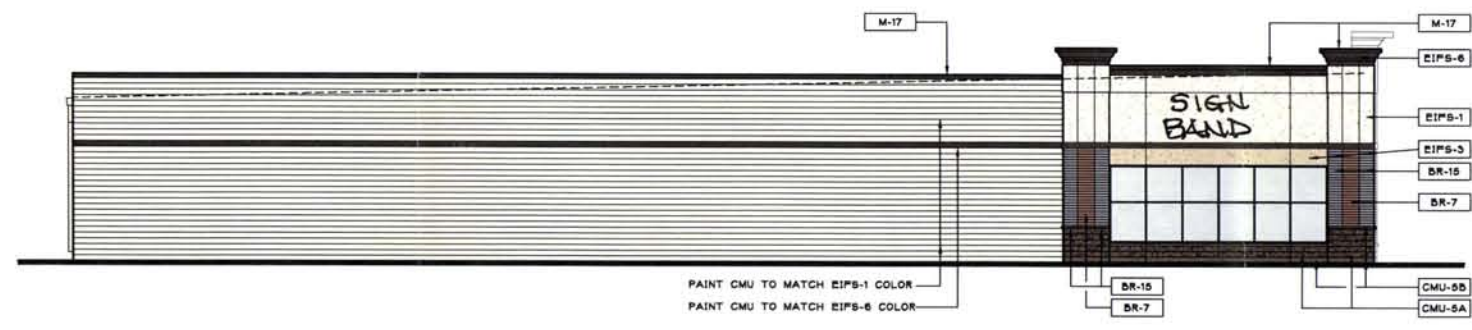
MATERIALS LEGEND (BASIS OF DESIGN. CONSTRUCT MOCK-UP BEFORE CONTINUING WITH WORK)				
NOTE	MATERIAL	MANUFACTURER	MODEL / COLOR	CONTACT
BR-7	BRICK VENEER	CLOUD CERAMICS	COLOR: OLD ROSE - TEXTURE SMOOTH. UTILITY SIZE	Metco Brick Inc., Greg Seaburg 852.417.0200
BR-15	BRICK VENEER	ENDICOTT	COLOR: MANGANESE IRONSPOT - TEXTURE VELOUR. UTILITY SIZE	Metco Brick Inc., Greg Seaburg 852.417.0200
CMU-5A	CMU VENEER	INTERSTAR	COLOR: 8D-15-1 - TEXTURE: ROCK FACE	Dakota Block Company, Barry Martes 605.342.6070
CMU-5B	CMU VENEER	INTERSTAR	COLOR: 8D-15-1 - TEXTURE: SMOOTH	Dakota Block Company, Barry Martes 605.342.6070
EIPS-1	EXTERIOR INSULATION FINISH SYSTEM	DRYVIT	COLOR: 113 AMARILLO WHITE - TEXTURE: SANDBLAST (LIGHT)	Lutz Company, 763.315.5886
EIPS-3	EXTERIOR INSULATION FINISH SYSTEM	DRYVIT	COLOR: 399 COPPER MILK - TEXTURE: SANDBLAST (LIGHT)	Lutz Company, 763.315.5886
EIPS-6	EXTERIOR INSULATION FINISH SYSTEM	STO	COLOR: 20915 - TEXTURE: PINE SAND (DARK)	Lutz Company, 763.315.5886
M-17	METAL COPING	UNA-CLAD	COLOR: MANSARD BROWN	-



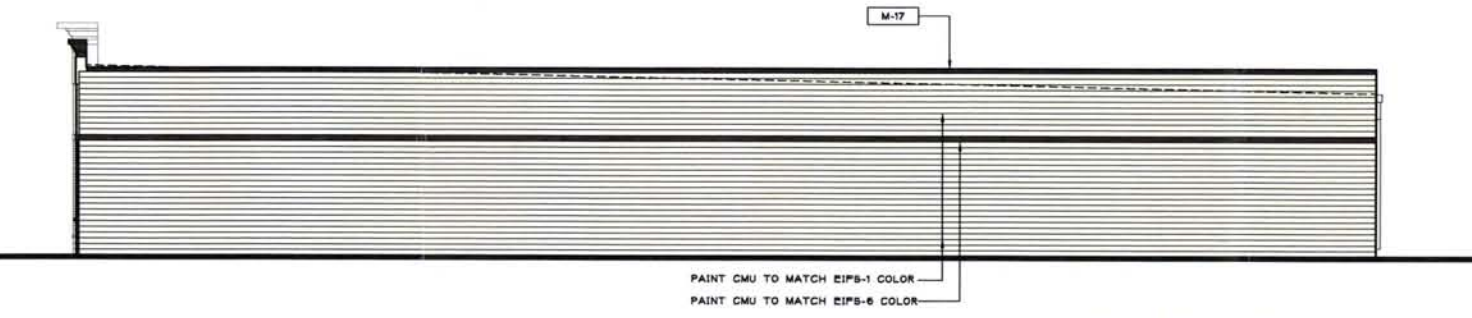
NORTH ELEVATION
SCALE: 1/8" = 1'-0"



SOUTH ELEVATION
SCALE: 1/8" = 1'-0"



EAST ELEVATION
SCALE: 1/8" = 1'-0"



WEST ELEVATION
SCALE: 1/8" = 1'-0"

KBA ARCHITECTS
KBA, Incorporated
Architects
4357 Ferguson Drive • Suite 200
Cincinnati, Ohio • 45245
(513) 752-7800
513.752.7833 fax | www.KBAinc.com

SHEET CONTENTS:
PRELIMINARY ELEVATIONS



RECEIVED

MAR 28 2013

RAPID CITY COMMUNITY PLANNING & DEVELOPMENT SERVICES

Proposed Retail Building for:
EGLIN STREET
Rapid City, SD 57701

REV. DATE CKD

Drawn By: TAY Checked: M8
MDB

Preliminary
Not For
Construction

Date: 3/4/13 Job No: 13012

A2.0
of 1

ZONING PLOT
3/4/13