

TRAFFIC SIGN SPECIFICATIONS

THE FOLLOWING SPECIFICATIONS APPLY TO ALL TRAFFIC CONTROL SIGNS INSTALLED WITHIN THE CITY. ALL SIGN BLANKS, MANUFACTURED AND INSTALLED FOR CITY ENGINEERING/CONTRACTORS. THESE ARE SPECIFICALLY DESIGNED BY THE CITY AND MUST BE USED IN ACCORDANCE WITH THE SPECIFICATIONS AND THESE IN THE MANUAL ON TRAFFIC CONTROL DEVICES AND TRAFFIC CONTROL DEVICES HANDBOOK.

INSTALLATION:

THE FOLLOWING POINTS TO ALL TRAFFIC CONTROL SIGNS SIGN FACES:

1. SIGNS SHALL BE BROWNING SIZE.
2. SIGN FACES SHALL BE MANUFACTURED USING HIGH INTENSITY OR QUALITY GRADE SHEETING MATERIAL.
3. SIGN MOUNTING BRACKETS SHALL BE MADE OF STEEL, ALUMINUM, OR OTHER MATERIAL THAT WILL WITHSTAND WEATHERING IN LONGHORN.
4. COLOR SHALL BE WHITE AND UNIFORM COLOR THROUGHOUT.
5. FACES SHALL BE FULLY ADHERED TO THE SIGNING MATERIAL.

BACKING/MATERIAL:

1. ALUMINUM SHALL BE ANODIZED AND 0.002 MINIMUM GAUGE THICKNESS.
2. ALUMINUM SHALL BE MINIMUM GRADE 3000.
3. ANODIZED PLASTIC SIGN BLANKS ARE ALLOWED. USE OF PLASTIC BLANKS MUST BE APPROVED BY THE CITY TRAFFIC ENGINEER PRIOR TO USE.
4. WOOD, PAPER, OR OTHER MATERIALS ARE NOT ALLOWED.
5. BACK OF SIGN BLANK SHALL BE FREE OF ALL OBJECTS EXCEPT DATE STENCIL.

INSTALLATION:

GENERALLY TRAFFIC CONTROL SIGNS SHALL BE INSTALLED IN ACCORDANCE WITH THE PROJECT PLANS, THESE SPECIFICATIONS AND THE FOLLOWING NOTES AND DETAILS:

1. ALL TRAFFIC CONTROL SIGNS SHALL BE MOUNTED 3 FEET ABOVE THE ROADWAY ELEVATION.
2. THE MOUNTED SIGN SHALL EXTEND TO THE TOP OF THE SIGN.
3. SQUARE TUBE SIGN POSTS SHALL BE USED. THESE POSTS SHALL MEET ALL APPLICABLE FEDERAL, STATE AND STATEMENTS, OR BE OF THE SAME MANUFACTURER AND USED BY THE CITY.
4. ALL POSTS SHALL BE FULLY ANCHORED.

SPECIFIC INTERPRETATIONS OF THESE SPECIFICATIONS SHALL BE MADE BY THE CITY TRAFFIC ENGINEER.

CITY OF RAPID CITY	PUBLIC WORKS DEPARTMENT
TRAFFIC DESIGN STANDARDS	DATE: 5-1-07
SIGN SPECIFICATIONS - S14	REV: 91-3c

SIGN POST INSTALLATION DETAIL

GENERAL NOTES:

1. ALL POSTS SHALL BE GALVANIZED IN ACCORDANCE WITH AASHTO M270.
2. ALL MATERIAL SHALL BE GALVANIZED IN ACCORDANCE WITH AASHTO M270.

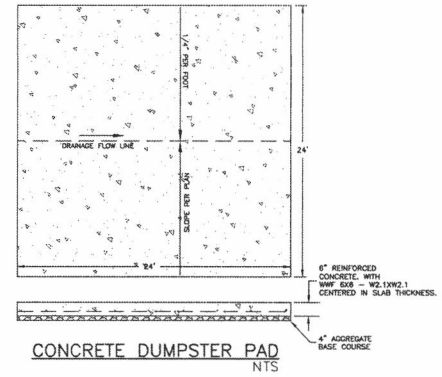
INSTALLATION SPECIFICATIONS:

1. SIGN BRACKET POST AND SIGN SHALL BE MOUNTED TO A MINIMUM DEPTH OF 1 1/2" ABOVE SIGNAGE LEVEL.
2. SIGN BRACKET POST AND SIGN BRACKET THROUGHS TO BE PLACED IN ACCORDANCE WITH THE CITY TRAFFIC ENGINEER'S DETAIL.
3. PLACE A PLAT NUMBER IN NAT ON SIGN BRACKET.
4. TOP OF SIGN AND TOP OF SIGN BRACKET SHALL BE AT SAME LEVEL.
5. FOR SIGN OVER 14" WIDE, TWO POSTS ARE REQUIRED.

SECTION C-C

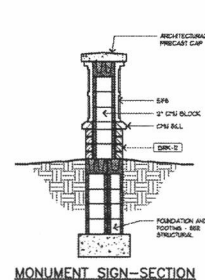
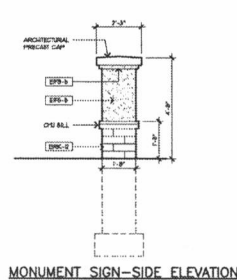
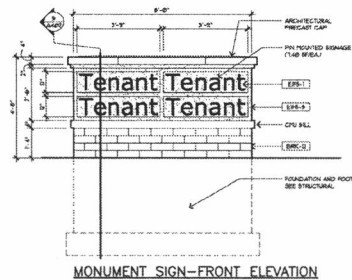
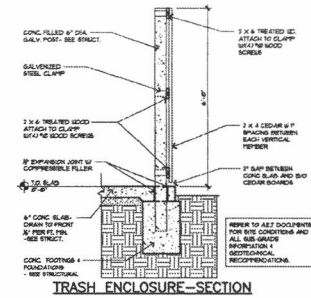
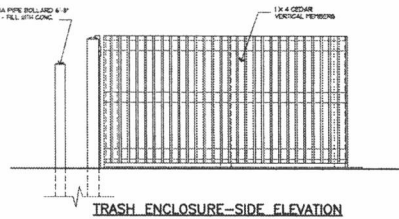
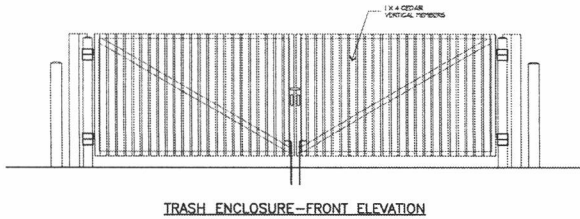
BREAKAWAY SUPPORT STEEL CLAMPING DIAGRAM

CITY OF RAPID CITY	PUBLIC WORKS DEPARTMENT
SIGN POST INSTALLATION	DATE: 5-1-07
DETAIL	REV: 91-3d



R1-1-24" STOP SIGN MOUNTING DETAIL

CITY OF RAPID CITY DETAIL 60-1 NTS



Prepared By: **RENNER & ASSOCIATES, LLC.**

PROJECT: 2013-03-01

DATE: 3/7/2013

DESIGNED BY: JRO

DRAWN BY: JRO, PMM

CHANGE DATE: 3/2013

PERIOD: 3/7/2013

APPROVED BY: R&A

DATE: 2/8/2013

REVISIONS:

LOCATION: **OUTPARCEL 16**
LOT 6, BLOCK 3 RUSHMORE CROSSING SUBD.
 T2N, R1E, B1M
 RAPID CITY, PENNINGTON COUNTY, SOUTH DAKOTA

Prepared For: **CPP RUSHMORE & LLC**
 C/O MIDLAND ATLANTIC
 ATTENTION: DAVID WOODRUE
 8044 MONTGOMERY RD
 SUITE 710
 CINCINNATI, OH 45236

Sheet Title: **DETAILS**

Sheet: **C.10**

RECEIVED

MAR 08 2013